

# CERTIFICATE OF LOCATION OF GOVERNMENT CORNER

CITY MON. NO. 195

OLD INDEX NO. 878

CENTER Corner of Section 10 Township 28 Range 23, 4 P.M.

STATE OF MINNESOTA, County of Ramsey

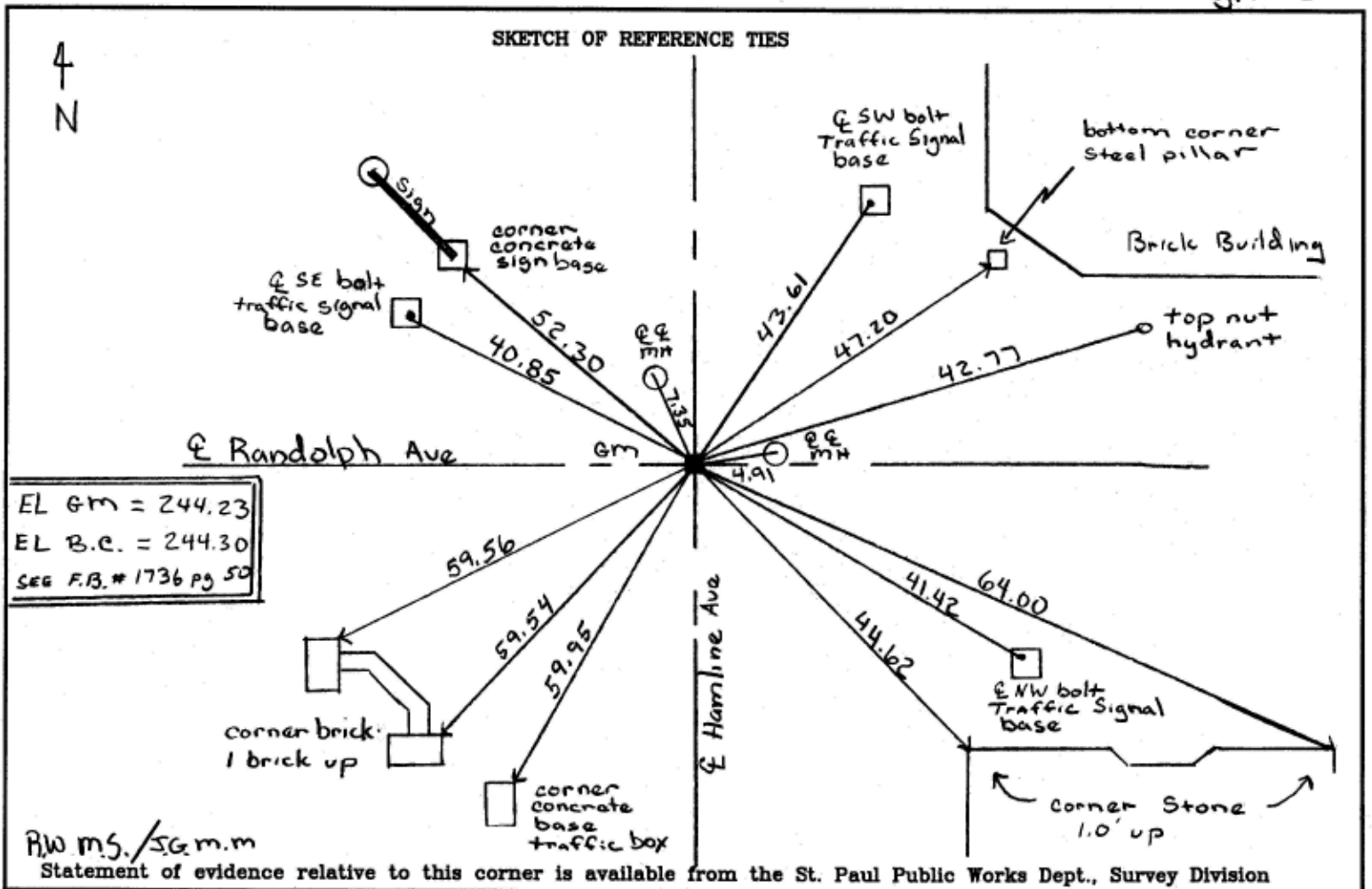
At the corner location shown on the sketch:

On Sept. 24, 2002 found a steel bolt in center of G.M., removed steel bolt, replaced it with rebar/brass cap in center of G.M.

left monument as found     lowered monument     removed monument (explain)

On Sept 24 2002 placed a brass cap to grade. G.M. is .07 below grade

SKETCH OF REFERENCE TIES



R.W.M.S./S.G.M.M.

Statement of evidence relative to this corner is available from the St. Paul Public Works Dept., Survey Division

I hereby certify that this document and the data contained herein was prepared by me or under my direct supervision.

[Signature] 9/25/02  
SIGNATURE DATE  
Registration No. 13144

- Land Surveyor     County Surveyor
- Professional Engineer
- Chief Surveyor, City of St. Paul

Office of The County Recorder, County of Ramsey

I hereby certify that this document was filed in the county Recorders office at \_\_\_\_\_ M. on the \_\_\_\_\_ day of \_\_\_\_\_

County Recorder \_\_\_\_\_  
By \_\_\_\_\_, Deputy

DOCUMENT NUMBER \_\_\_\_\_