

CERTIFICATE OF LOCATION OF GOVERNMENT CORNER

CITY MON. NO. 192

OLD INDEX NO. 1280

1/4 Corner of Section 29 Township 28 Range 23, 4th P.M.

STATE OF MINNESOTA, County of Ramsey

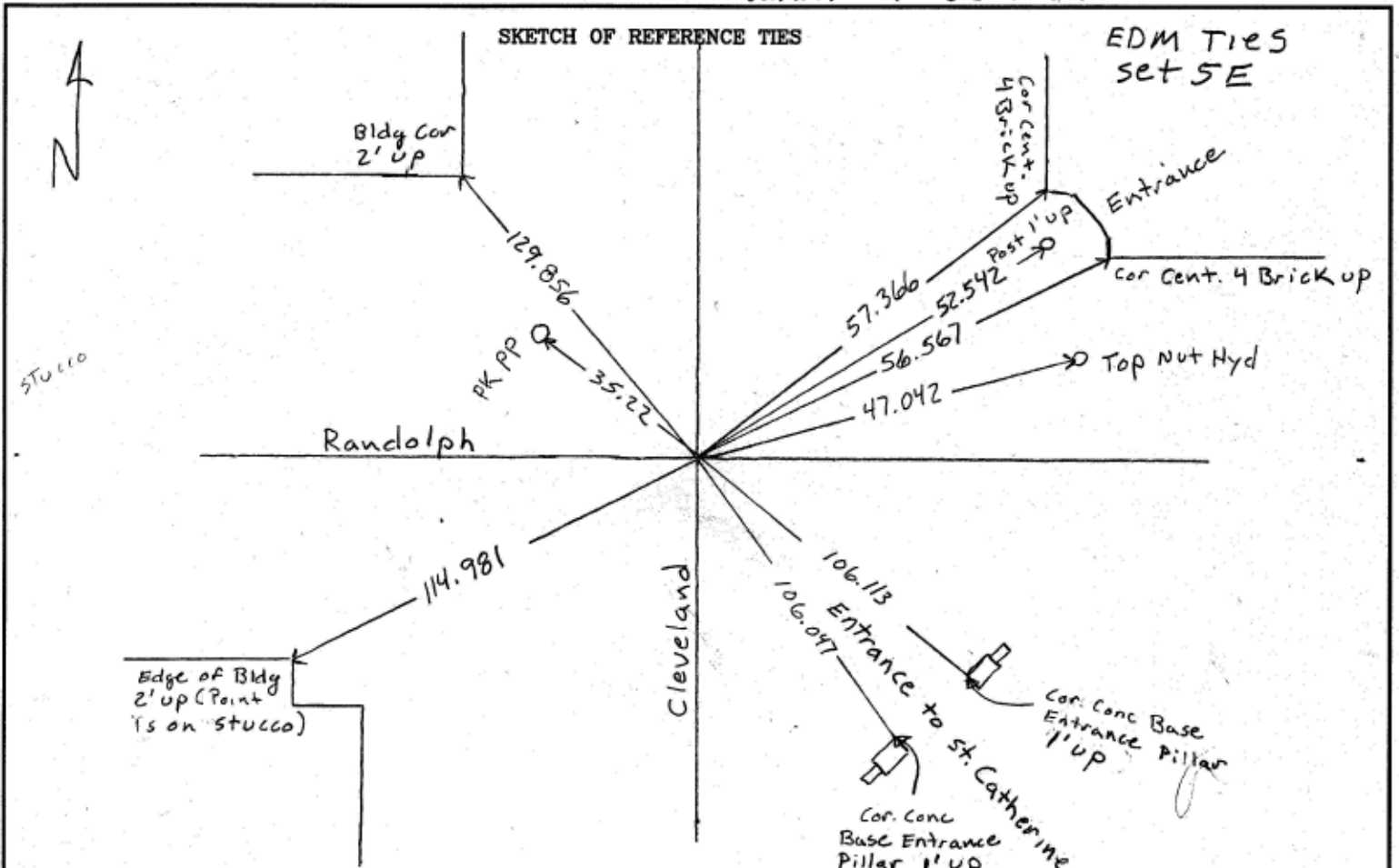
At the corner location shown on the sketch:

On 6-30-06 date found a No inplaced MONUMENT FOUND.
Found PIN 1' South E0.3 ft below grade
left pin in place

- left monument as found
- lowered monument
- removed monument (explain)

On 6-29-06 date placed a CIM (set to Grade) MARKED
"QUARTER SECTION"

SKETCH OF REFERENCE TIES



Statement of evidence relative to this corner is available from the St. Paul Public Works Dept., Survey Division

I hereby certify that this document and the data contained herein was prepared by me or under my direct supervision.

Michael P. Murphy 7/19/06
SIGNATURE DATE

- Registration No. 46001
- Land Surveyor
 - County Surveyor
 - Professional Engineer
 - Chief Surveyor, City of St. Paul

Office of The County Recorder, County of Ramsey

I hereby certify that this document was filed in the county
Recorders office at _____ M. on the _____ day of _____

County Recorder _____
By _____, Deputy

DOCUMENT NUMBER _____