

# CERTIFICATE OF LOCATION OF GOVERNMENT CORNER

South East Corner of Section 4, Township 28, Range 22, 4<sup>th</sup> P.M.

STATE OF MINNESOTA, County of RAMSEY

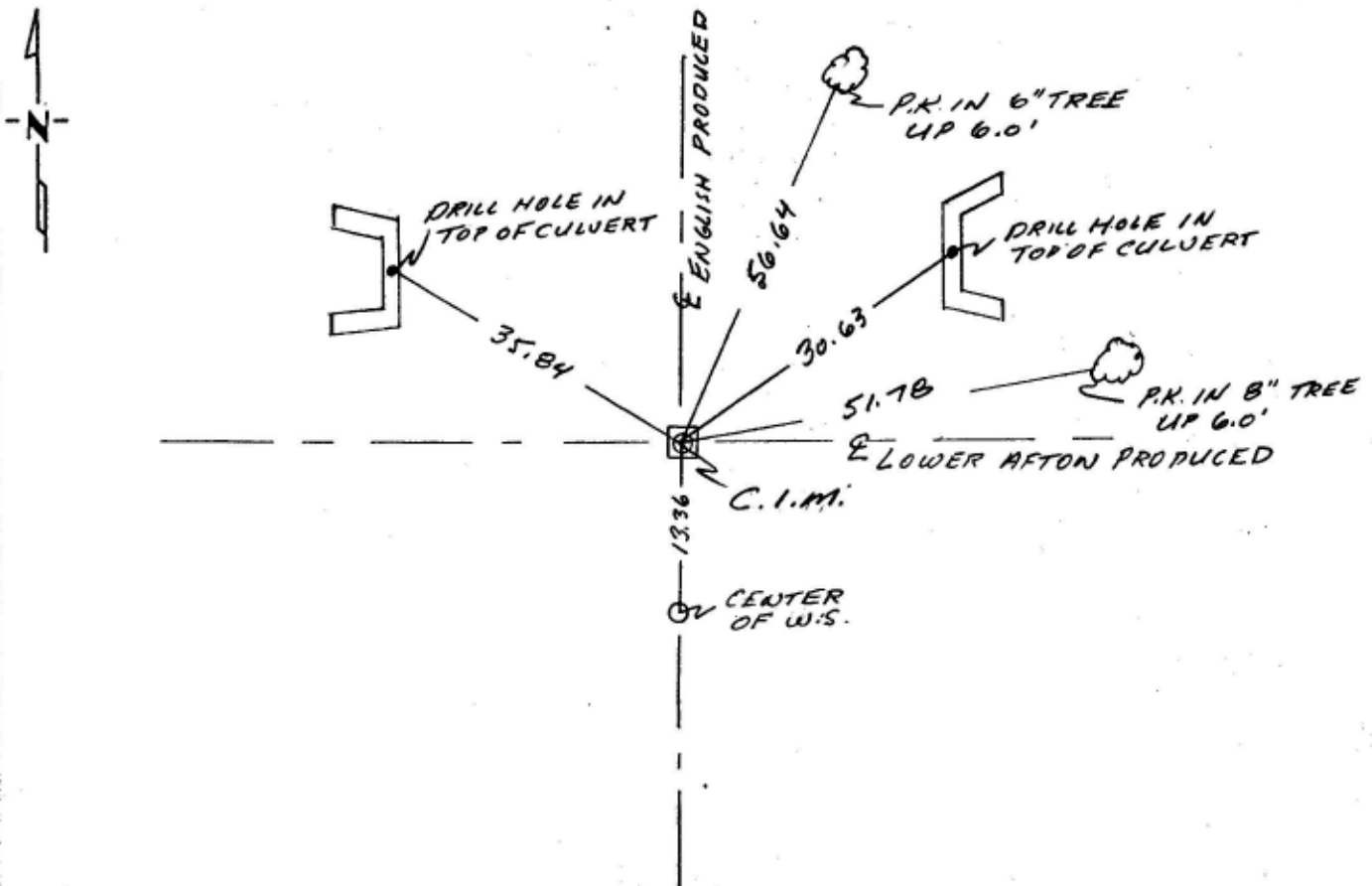
At the corner location shown on the sketch:

On \_\_\_\_\_ found a \_\_\_\_\_  
DATE

left monument as found,  lowered monument,  removed monument (explain)

On Oct. 10, 1996 placed a CAST IRON MONT. TO GRADE  
DATE

### SKETCH OF REFERENCE TIES



NOTE: MONT. LOCATED ON PIGS EYE RD. 0.7 MILES FROM CHILDS RD.

Statement of evidence relative to this corner location is on back of page.

I hereby certify that this document and the data contained herein was prepared by me or under my direct supervision.

William J. Cutting SIGNATURE 10/18/96 DATE

Registration No. \_\_\_\_\_  
 Land Surveyor,  Professional Engineer  
 County Surveyor,  County Engineer

OFFICE OF THE COUNTY RECORDER  
County of \_\_\_\_\_

I hereby certify that this document was filed in the Co. Recorders office at \_\_\_\_\_ .M. on the \_\_\_\_\_ day of \_\_\_\_\_ A.D., 19 \_\_\_\_\_

County Recorder \_\_\_\_\_  
By \_\_\_\_\_, Deputy

DOCUMENT NO. \_\_\_\_\_