

CERTIFICATE OF LOCATION OF GOVERNMENT CORNER

North West Corner of Section 8, Township 28, Range 22, 4th P.M.

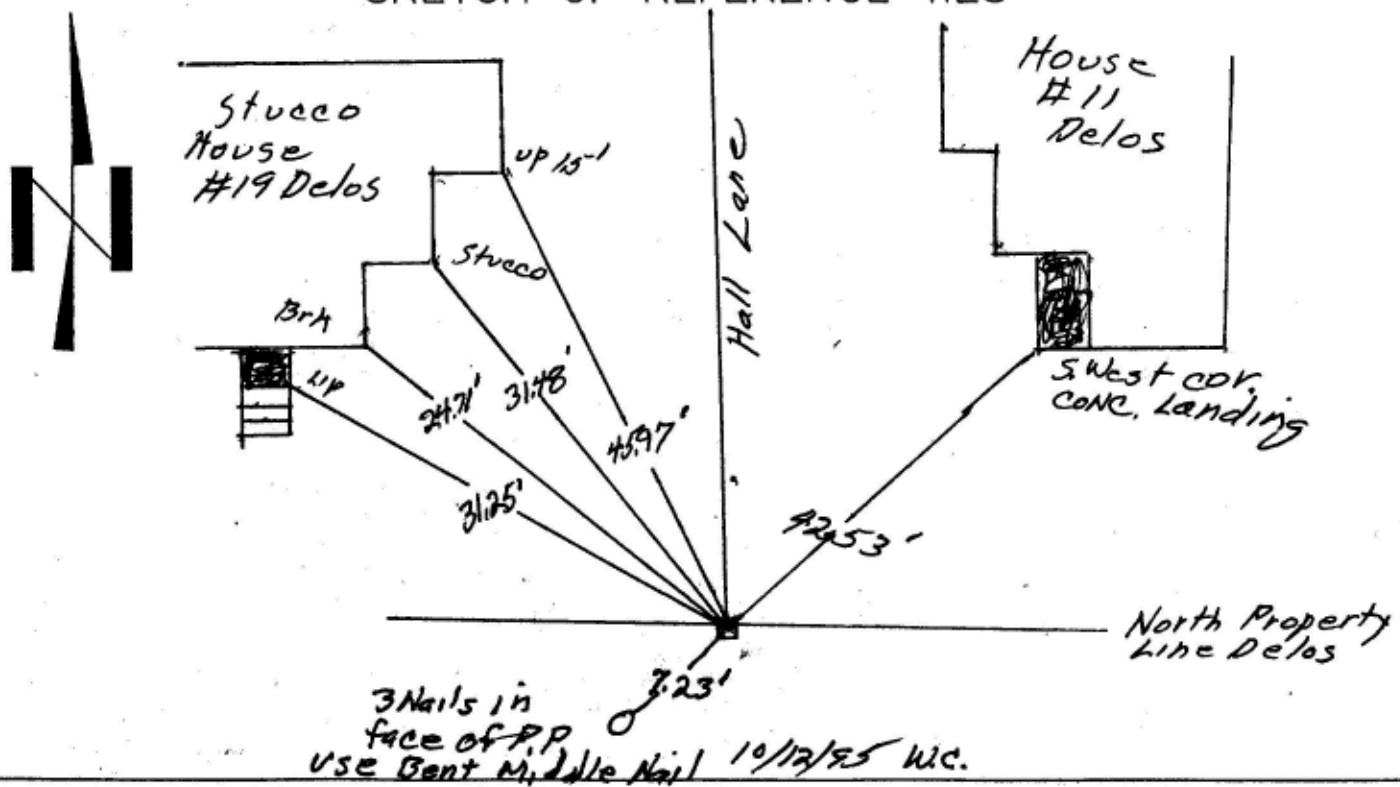
STATE OF MINNESOTA, County of Ramsey

At the corner location shown on the sketch:

- ★ On 8/10/91 found a Granite Monument Approx 0.6' below
Grade Sidewalk At the ^{East} end of a
Retaining wall to the West
- ★ left mon. as found lowered mon. removed mon.(explain)

On _____ placed a _____

SKETCH OF REFERENCE TIES



Statement of evidence relative to this corner location is on back of page.

I hereby certify that this document and the date contained herein was prepared by me or under my supervision.

William J. Cutting Signature 8/05/91 date

Registration No. 20576

- ★ Land Surveyor Professional Engineer
- County Surveyor County Engineer

Office of the Register of Deeds
County of _____

I hereby certify that this document was filed in the Reg. of Deeds office at _____ M. on the _____ day of _____ A.D., 19____ Register of Deeds _____ By _____

DOCUMENT NO. _____

Scanned 5/19/99