

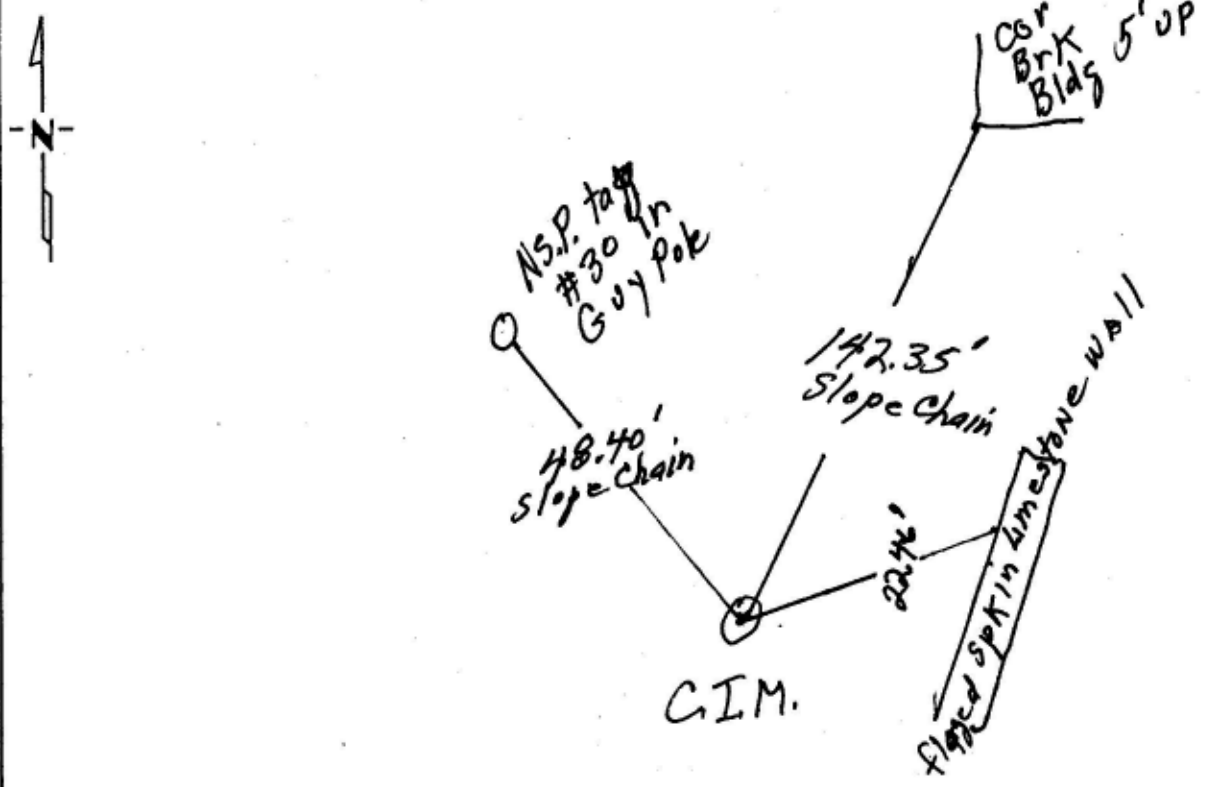
# CERTIFICATE OF LOCATION OF GOVERNMENT CORNER

North 1/4 Corner of Section 7, Township 28, Range 22, 4th P.M.  
STATE OF MINNESOTA, County of Remsey

At the corner location shown on the sketch:

- On 10/12/95 found a Cast Iron Monument with  
sign Post  
 left monument as found,  lowered monument,  removed monument (explain)
- On \_\_\_\_\_ placed a \_\_\_\_\_  
DATE

### SKETCH OF REFERENCE TIES



Statement of evidence relative to this corner location is on back of page.

I hereby certify that this document and the data contained herein was prepared by me or under my direct supervision.

William Bentley Oct 12 1995  
 REGISTRATION NO. \_\_\_\_\_  
 Land Surveyor  Professional Engineer  
 County Surveyor,  County Engineer

OFFICE OF THE COUNTY RECORDER  
County of \_\_\_\_\_

I hereby certify that this document was filed in the Co. Recorders office at \_\_\_\_\_ .M. on the \_\_\_\_\_ day of \_\_\_\_\_ A.D., 19 \_\_\_\_\_

County Recorder \_\_\_\_\_  
By \_\_\_\_\_, Deputy  
DOCUMENT NO. \_\_\_\_\_