

0179-0139-8

CERTIFICATE OF LOCATION OF GOVERNMENT CORNER

CITY MON. NO. 179

OLD INDEX NO. 139

SE Corner of Section 1 Township 28 Range 23, 4 P.M.

STATE OF MINNESOTA, County of Ramsey

At the corner location shown on the sketch:

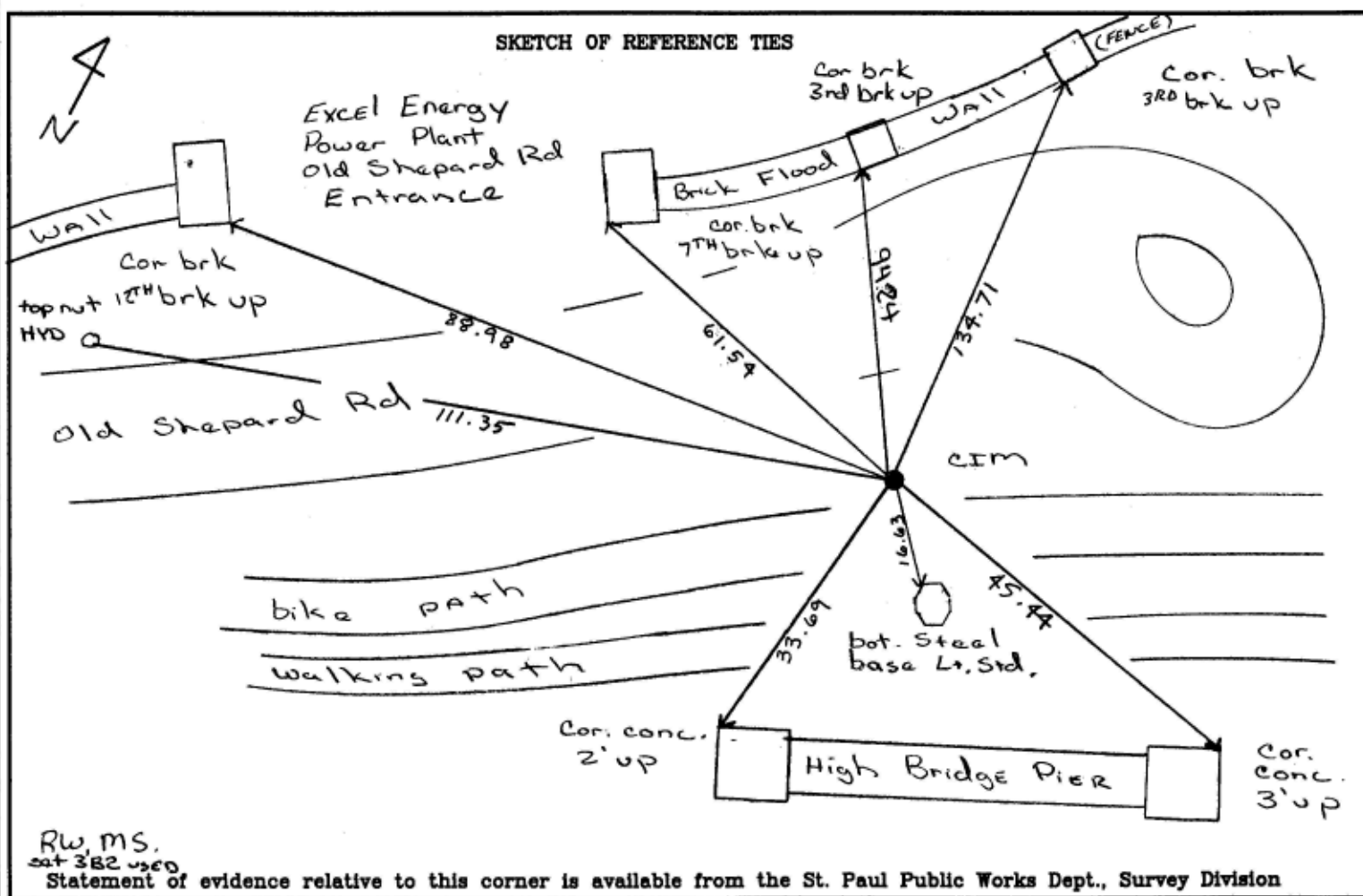
On Dec. 16, 2003 found a bent over rebar 2' below new
date

landscaping grade, old cim removed during construction

- left monument as found
- lowered monument
- removed monument (explain)

On Dec 19, 2003 placed a CIM in concrete at grade.
date

SKETCH OF REFERENCE TIES



RW, MS.
sat 382 used

Statement of evidence relative to this corner is available from the St. Paul Public Works Dept., Survey Division

I hereby certify that this document and the data contained herein was prepared by me or under my direct supervision.

Michael P Murphy
SIGNATURE

Dec 22, 2003
~~11/20/03~~
DATE

Registration No. 41001

- Land Surveyor
- County Surveyor
- Professional Engineer
- Chief Surveyor, City of St. Paul

Office of The County Recorder, County of Ramsey

I hereby certify that this document was filed in the county
Recorders office at _____ M. on the _____ day of _____

County Recorder _____

By _____, Deputy

DOCUMENT NUMBER _____