

# CERTIFICATE OF LOCATION OF GOVERNMENT CORNER

CITY MON. NO. 178

OLD INDEX NO. 137

1/4 <sup>common to</sup> Corner ~~of~~ Sections 1 & 12 Township 28 Range 23, 4<sup>th</sup> P.M.

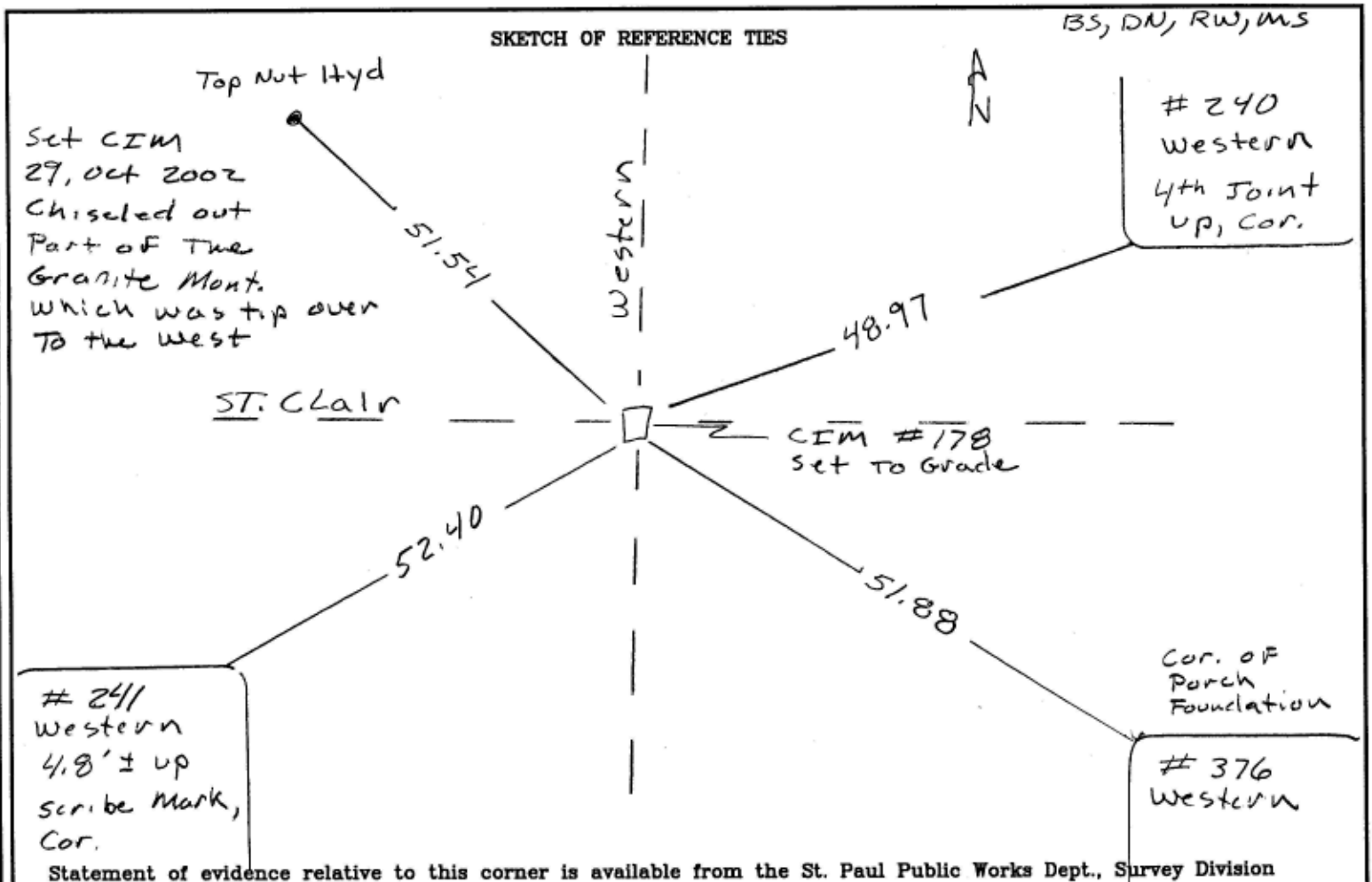
STATE OF MINNESOTA, County of Ramsey

At the corner location shown on the sketch:

On 10-25-2002 found a Tip over Granite, Tip to the  
<sub>date</sub>  
west, chiseled OFF Part of The Granite Mont.

left monument as found       lowered monument       removed monument (explain)

On 10-29-2002 placed a CIM TO GRADE  
<sub>date</sub>



I hereby certify that this document and the data contained herein was prepared by me or under my direct supervision.

[Signature] 11/12/02  
SIGNATURE DATE

Registration No. 13144

Land Surveyor       County Surveyor

Professional Engineer

Chief Surveyor, City of St. Paul

Office of The County Recorder, County of Ramsey

I hereby certify that this document was filed in the county

Recorders office at \_\_\_\_\_ M. on the \_\_\_\_\_ day of \_\_\_\_\_

County Recorder \_\_\_\_\_

By \_\_\_\_\_, Deputy

DOCUMENT NUMBER \_\_\_\_\_