

# CERTIFICATE OF LOCATION OF GOVERNMENT CORNER

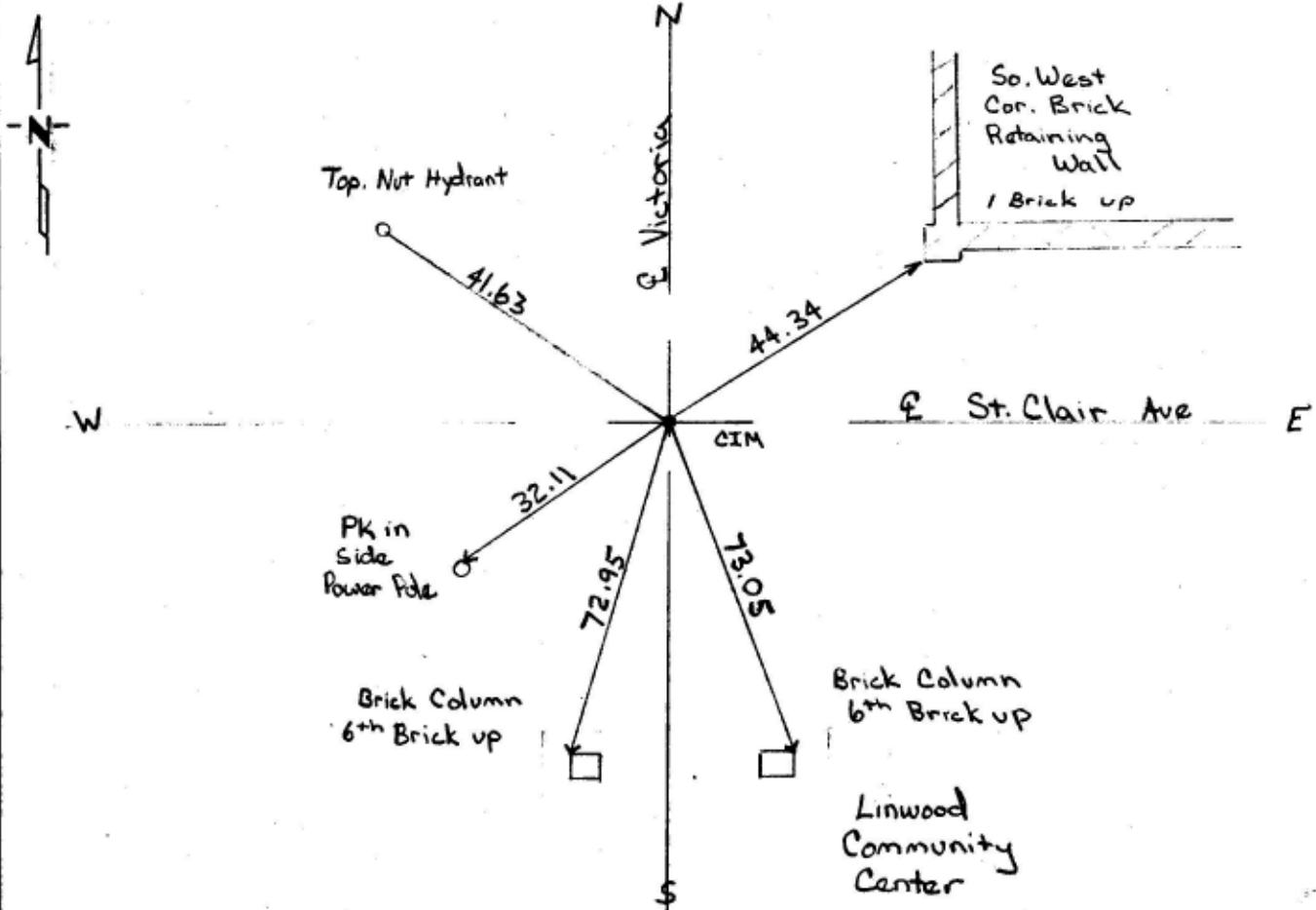
South 1/4 Corner of Section 2, Township 28, Range 23, 4th P.M.

STATE OF MINNESOTA, County of Ramsey

At the corner location shown on the sketch:

- On 7-27-95 found a Granite monument 0.40 Below Grade  
DATE Street Construction  
 left monument as found,  lowered monument,  removed monument (explain)
- On 10-2-95 placed a C.I.M. to grade  
DATE

### SKETCH OF REFERENCE TIES



Statement of evidence relative to this corner location is on back of page.

RW, ME, RS

I hereby certify that this document and the data contained herein was prepared by me or under my direct supervision.

William J. Cutting  
SIGNATURE

Oct 13 1995  
DATE

Registration No: \_\_\_\_\_

- Land Surveyor,  Professional Engineer
- County Surveyor,  County Engineer

### OFFICE OF THE COUNTY RECORDER

County of \_\_\_\_\_

I hereby certify that this document was filed in the Co. Recorders office at \_\_\_\_\_ M. on the \_\_\_\_\_ day of \_\_\_\_\_ A.D., 19 \_\_\_\_\_

County Recorder \_\_\_\_\_

By \_\_\_\_\_, Deputy

DOCUMENT NO. \_\_\_\_\_