

CERTIFICATE OF LOCATION OF GOVERNMENT CORNER

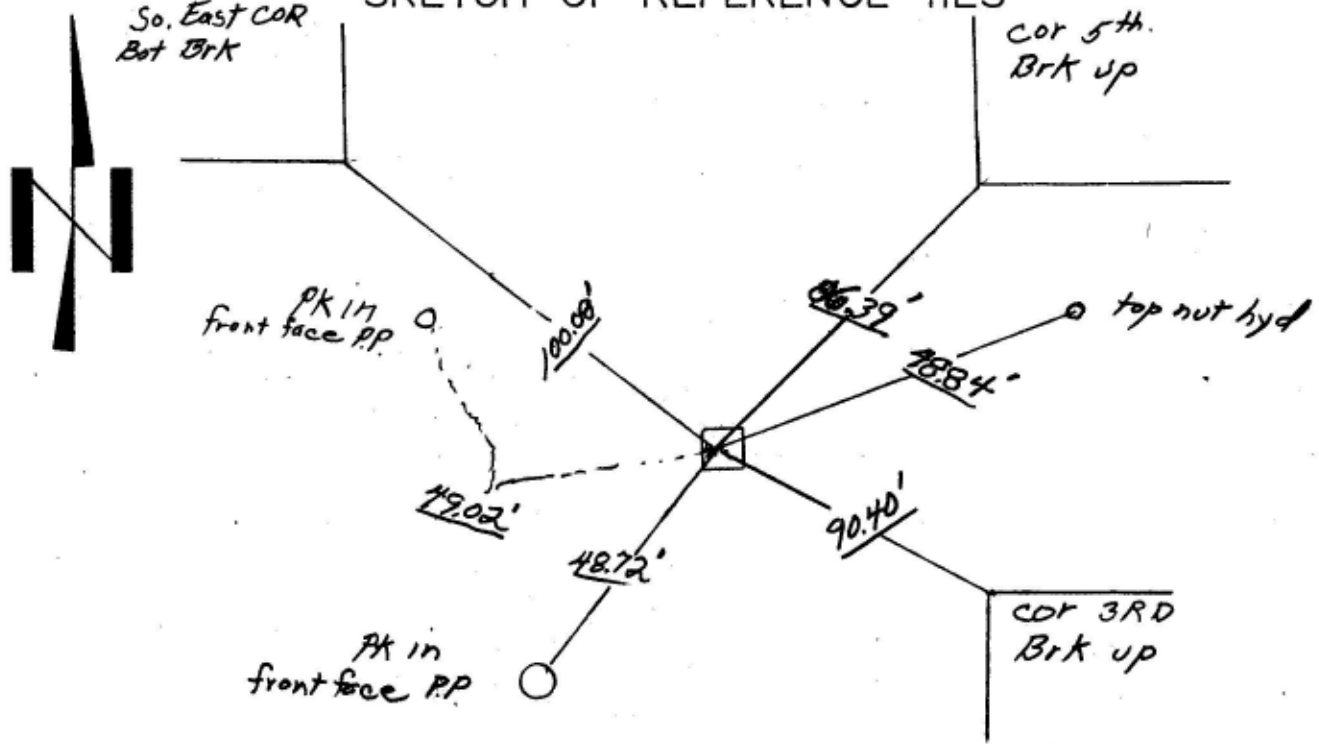
South West Corner of Section 2, Township 28, Range 23, 4th P.M.

STATE OF MINNESOTA, County of Ramsey

At the corner location shown on the sketch:

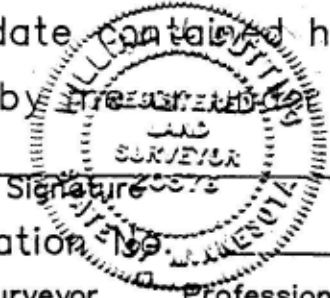
- On 9/24/89 found a Granite Mon. down 0.45 ft below pavement Grade
- left mon. as found □ lowered mon. □ removed mon. (explain)
- On 9/26/89 placed a Pc-Box at Pavement Grade

SKETCH OF REFERENCE TIES



Statement of evidence relative to this corner location is on back of page.

I hereby certify that this document and the date contained herein was prepared by _____ my supervision.



Signature _____ date _____

Registration No. _____

- Land Surveyor □ Professional Engineer
- County Surveyor □ County Engineer

Office of the Register of Deeds
County of _____

I hereby certify that this document was filed in the Reg. of Deeds office at _____ M. on the _____ day of _____ A.D., 19____
Register of Deeds _____ By _____

DOCUMENT NO. _____

66/6/15 p... scanned