

CERTIFICATE OF LOCATION OF GOVERNMENT CORNER

City ID: 0174

Old Index #: 129

County ID #: 630

NORTH QUARTER Corner of Section 10, Township 28 North,
Range 23 West, Fourth Principal Meridian, County of Ramsey, State of Minnesota,
At the corner location shown on the sketch:

On 11/19/2025 found CIM AT GRADE AT CL/CL OF INTERSECTION.

SET AND REESTABLISHED TIES WITH TRIMBLE S6 TOTAL STATION.

left monument as found lowered monument removed monument (explain)

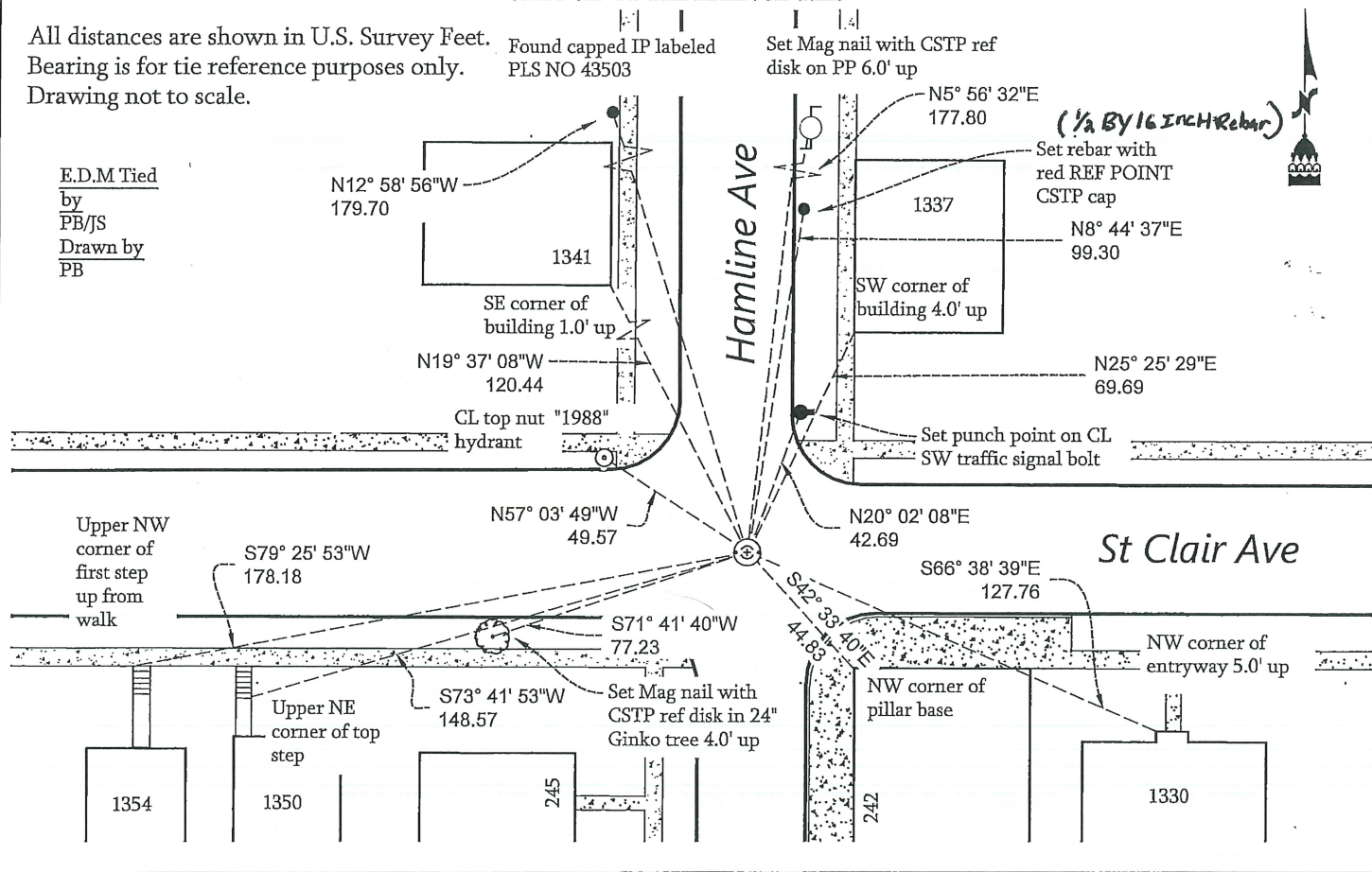
On _____ placed a _____

SKETCH OF REFERENCE TIES

All distances are shown in U.S. Survey Feet.
Bearing is for tie reference purposes only.
Drawing not to scale.

Found capped IP labeled
PLS NO 43503

Set Mag nail with CSTP ref
disk on PP 6.0' up



I hereby certify that this survey, plan, or report was prepared by me, or under my direct supervision, and that I am a duly Licensed Land Surveyor under the laws of the State of Minnesota.

Kevin Kaley
Kevin Kaley, LS
City Surveyor, Saint Paul, Minnesota

12/10/2025
Date

Registration No. #53546

Office of the County Surveyor, Ramsey County, Minnesota

I hereby certify that this document was filed with the County Surveyor's Office at 8:00 A. .M. on the 4th day of

March, 2026
Daniel Baar

Daniel Baar, LS
County Surveyor, Ramsey County, Minnesota

PLS Description: ¼ Corner SQ03/NQ10-28-23 4th P.M.

St. Paul Monument #: 174

St. Paul Old Index #: 0129

Ramsey County #: 0630

Location: St. Clair Ave. & Hamline Ave.

- Oct 1847 Wood post set as corner by Deputy Surveyor Isaac N Higbee during Public Land Survey. Tied to 2 bearing trees. See IH p.016-017 2823
- 1887 Monument set at ¼ Corner in place of boulder with cross on it.
- 1888 FB 229 shows distances:
from NQ 10-28-23 to C10-28-23 2644.76 ft.
from NE10-28-23 to NQ10-28-23 2658.40 ft.
from NW10-28-23 to NQ10-28-23 2637.66 ft.
and angles:
from SW03-28-23 to C03-28-23 89°48'
from SE03-28-23 to C03-28-23 90°14'
from NE10-28-23 to C10-28-23 89°38'
from WQ10-28-23 to C10-28-23 90°20'
- 1889 FB 291 shows
from SQ03-28-23 to C03-28-23 2643.57 ft.
- 1915 FB 831 shows:
from NQ10-28-23 to C10-28-23 2644.40 ft.
- 1929 Monument tied
- 1971 Monument tied
- 1972 City crews found 2" cast iron pipe set to grade. Ties placed.
- Jul 7, 1972 Cast iron pipe removed. GM found beneath pipe. CIM cap placed in concrete to street grade above GM. See Yellow Tie Book and FB 1689A p.23.
- Mar 1983 Traverse run through corner with Kern K15 and Topcon EDM
- 1985 Ties checked
- 1987 Set CIM. See Yellow Tie Book.
- 1989 Traverse run through corner using Kern E1 total station
- 1991 Position allowed to float during Least Squares Adjustment

distances:

from SW03-28-23 to SQ03-28-23	2637.98 ft.
from SQ03-28-23 to C03-28-23	2643.13 ft.
from SE03-28-23 to SQ03-28-23	2658.57 ft.
from NQ10-28-23 to C10-28-23	2644.06 ft.

angles:

from SW03-28-23 to C03-28-23	89°48'02.6"
from SE03-28-23 to C03-28-23	90°14'16.9"
from NE10-28-23 to C10-28-23	89°38'35.6"
from NW10-28-23 to C10-28-23	90°19'04.9"

Sep 27, 1995 Found CIM 0.1 ft. below street grade. See Yellow Tie Book.

Mar 21, 1996 Found CIM. See Yellow Tie Book.

Feb 7, 1997 Elev 239.13 ft. on CIM

Mar 2000 Found CIM 0.3 ft below grade. Placed four 2' straddles (marked for painting target for 2000 aerial).

Feb 20, 2002 Elev 239.11 ft on CIM 0.07 below asphalt surface. See FB 1736 p.21

Oct 2012 Found CIM at street grade. Photos taken and ties placed.

Nov. 19, 2025 Found CIM at grade, set new ties and took pictures.

