

# CERTIFICATE OF LOCATION OF GOVERNMENT CORNER

City ID: 0172

Old Index #: 1289

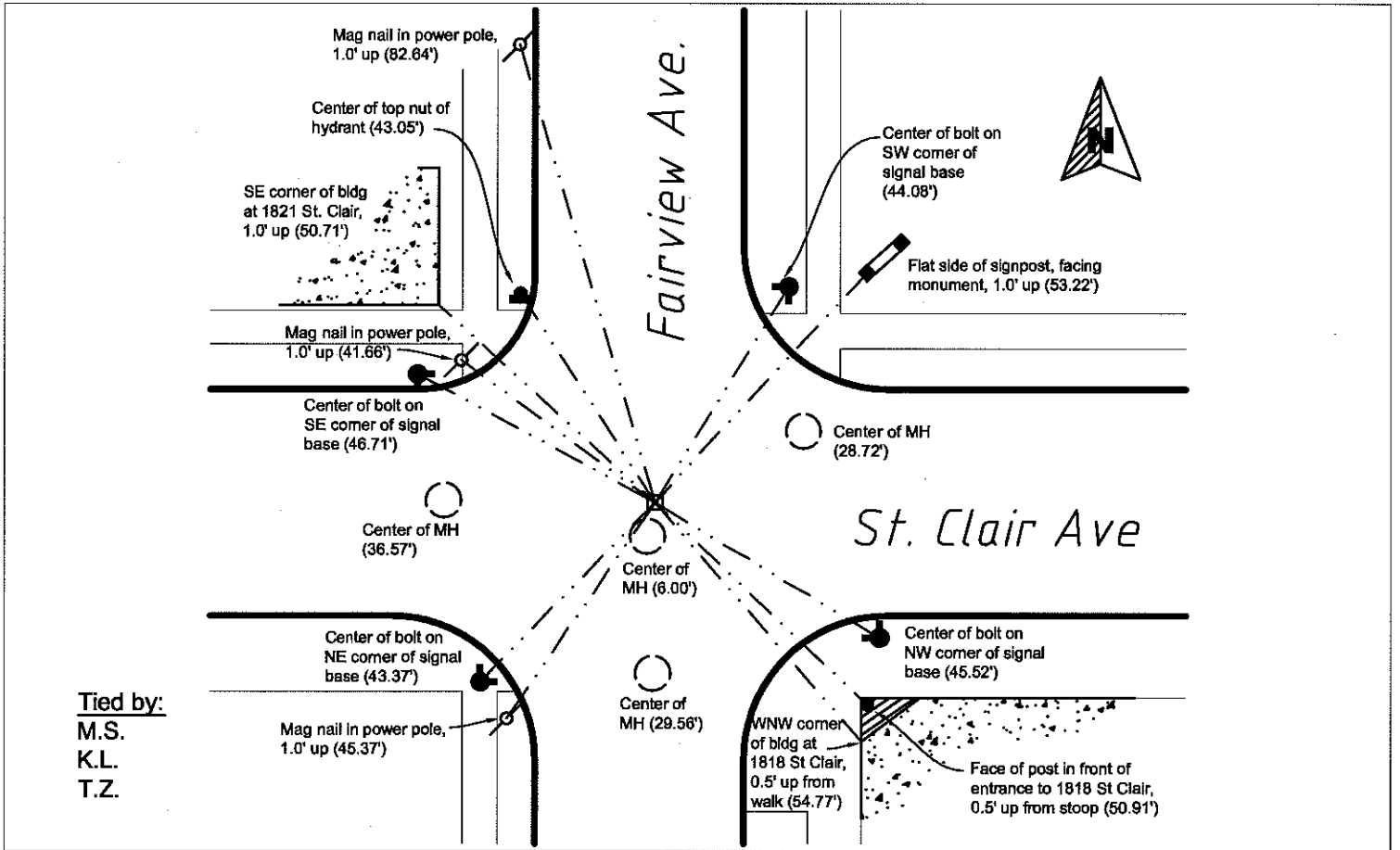
1/4 Corner of Section 4&9 Township 28 Range 23, 4th P.M.  
STATE OF MINNESOTA, County of Ramsey  
At the corner location shown on the sketch:

On May 25, 2011 found a CIM at asphalt grade at CL/CL of Fairview and St Clair Ave.

- left monument as found     
  lowered monument     
  removed monument (explain)  
CIM removed during construction

On October 24, 2011 placed a CIM to asphalt grade.

SKETCH OF REFERENCE TIES



Tied by:  
M.S.  
K.L.  
T.Z.

Statement of evidence relative to this corner is available from the St. Paul Public Works Dept., Survey Division

I hereby certify that this document and the data contained herein was prepared by me or under my direct supervision.

*[Signature]* Aug 17, 2012  
Registration No. 441880

- Land Surveyor       County Surveyor  
 Professional Engineer  
 Chief Surveyor, City of St. Paul

Office of the County Recorder, County of Ramsey  
I hereby certify that this document was filed in the county recorders office at \_\_\_\_\_ M. on the \_\_\_\_\_ day of \_\_\_\_\_

County Recorder \_\_\_\_\_

By \_\_\_\_\_, Deputy

DOCUMENT NUMBER \_\_\_\_\_