

CERTIFICATE OF LOCATION OF GOVERNMENT CORNER

CITY MON. NO. 171

OLD INDEX NO. 1290

SECTION Corner of Sections 4, 5, 8 & 9 Township 28 Range 23, 4th P.M.

STATE OF MINNESOTA, County of Ramsey

At the corner location shown on the sketch:

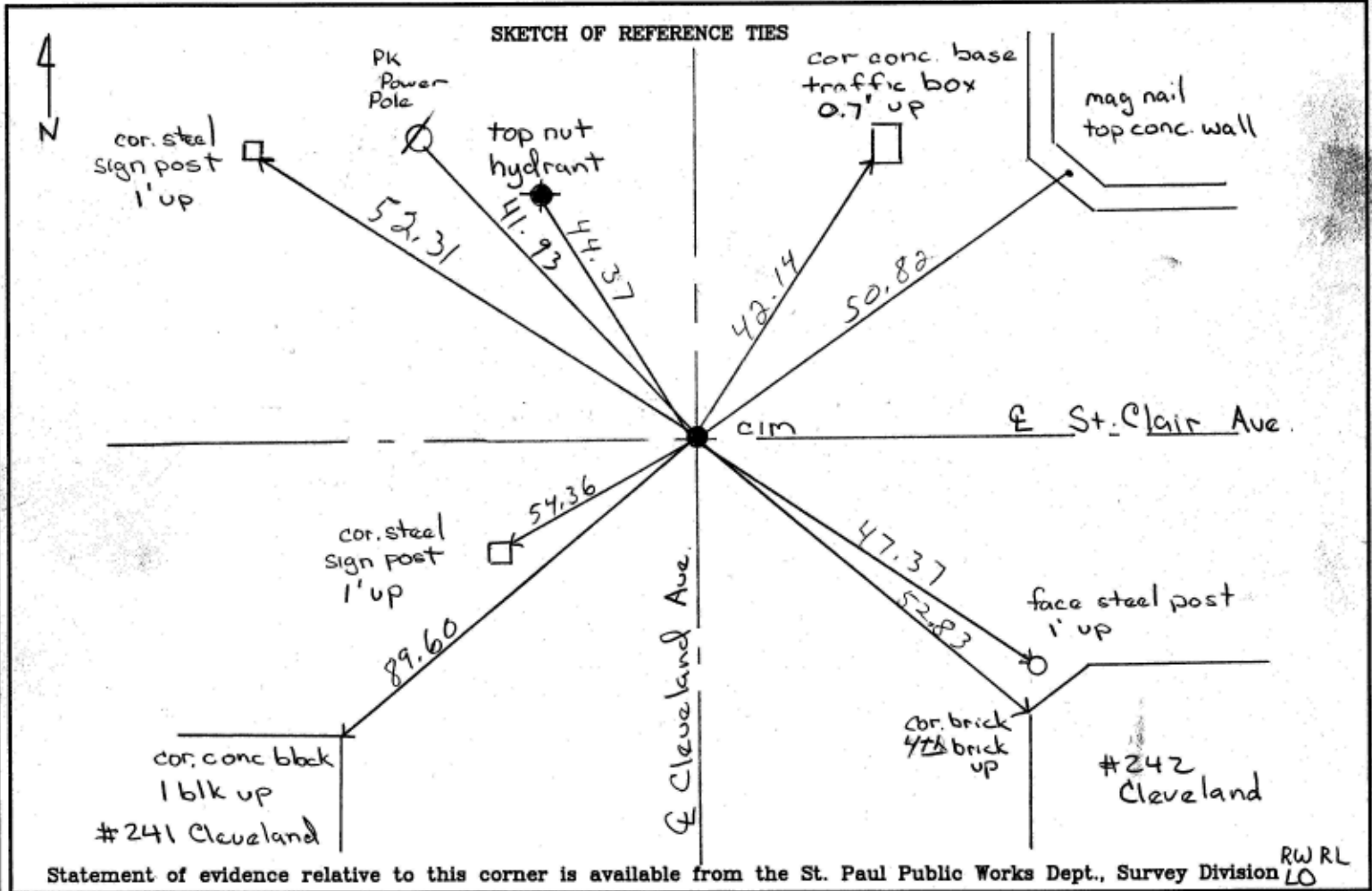
On Aug 17, 2006 found a CIM 0.02' below asphalt grade

- left monument as found
- lowered monument
- removed monument (explain)

On _____ date _____ placed a _____

47.03
34
37

SKETCH OF REFERENCE TIES



RW RL
LO

I hereby certify that this document and the data contained herein was prepared by me or under my direct supervision.

Michael P. Murphy 8/28/2006
SIGNATURE DATE

Registration No. 41,001

Land Surveyor County Surveyor

Professional Engineer

Chief Surveyor, City of St. Paul

Office of The County Recorder, County of Ramsey

I hereby certify that this document was filed in the county

Recorders office at _____ M. on the _____ day of _____

County Recorder _____

By _____, Deputy

DOCUMENT NUMBER _____