

CERTIFICATE OF LOCATION OF GOVERNMENT CORNER

CITY MON. NO. 170

OLD INDEX NO. 1078

1/4 Corner of Section 8 Township 28 Range 23, P.M.

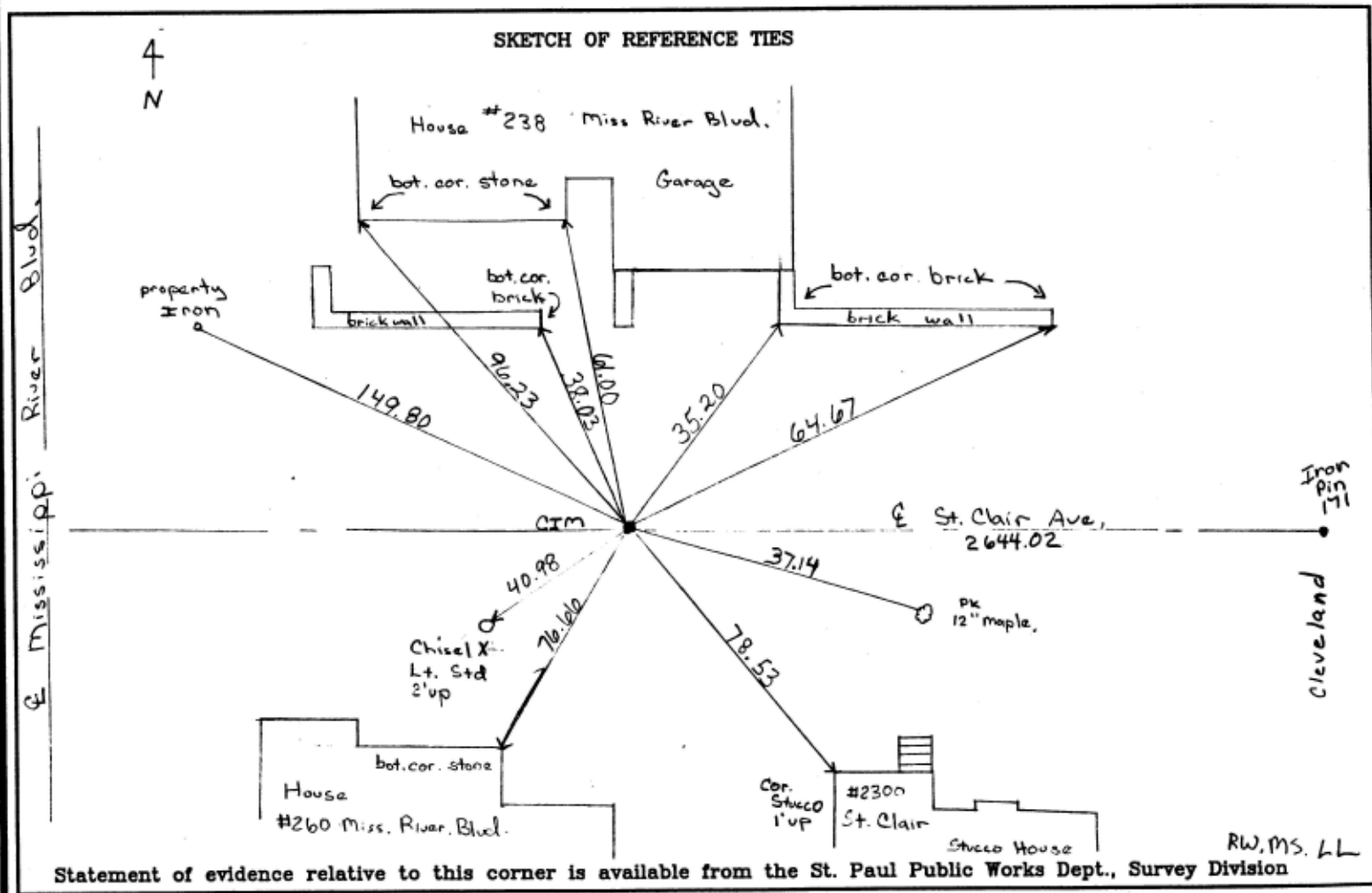
STATE OF MINNESOTA, County of Ramsey

At the corner location shown on the sketch:

On Nov 1, 2000 found a broken off CIM in gravel base
date
in water main construction trench

- left monument as found
- lowered monument
- removed monument (explain)

On Nov 2, 2000 placed a CIM at grade
date



I hereby certify that this document and the data contained herein was prepared by me or under my direct supervision.

Office of The County Recorder, County of Ramsey

I hereby certify that this document was filed in the count:

Recorders office at _____ M. on the _____ day of _____

County Recorder _____

By _____, Deputy

DOCUMENT NUMBER _____

Jeffrey J. Gurnea 11/3/00
SIGNATURE DATE

Registration No. 13144

- Land Surveyor
- County Surveyor
- Professional Engineer
- Chief Surveyor, City of St. Paul