

# CERTIFICATE OF LOCATION OF GOVERNMENT CORNER

City ID: 0166  
Old Index #: 2240

E 1/4 Corner of Section 3 Township 28 Range 22, 4th P.M.  
STATE OF MINNESOTA, County of Ramsey  
At the corner location shown on the sketch:

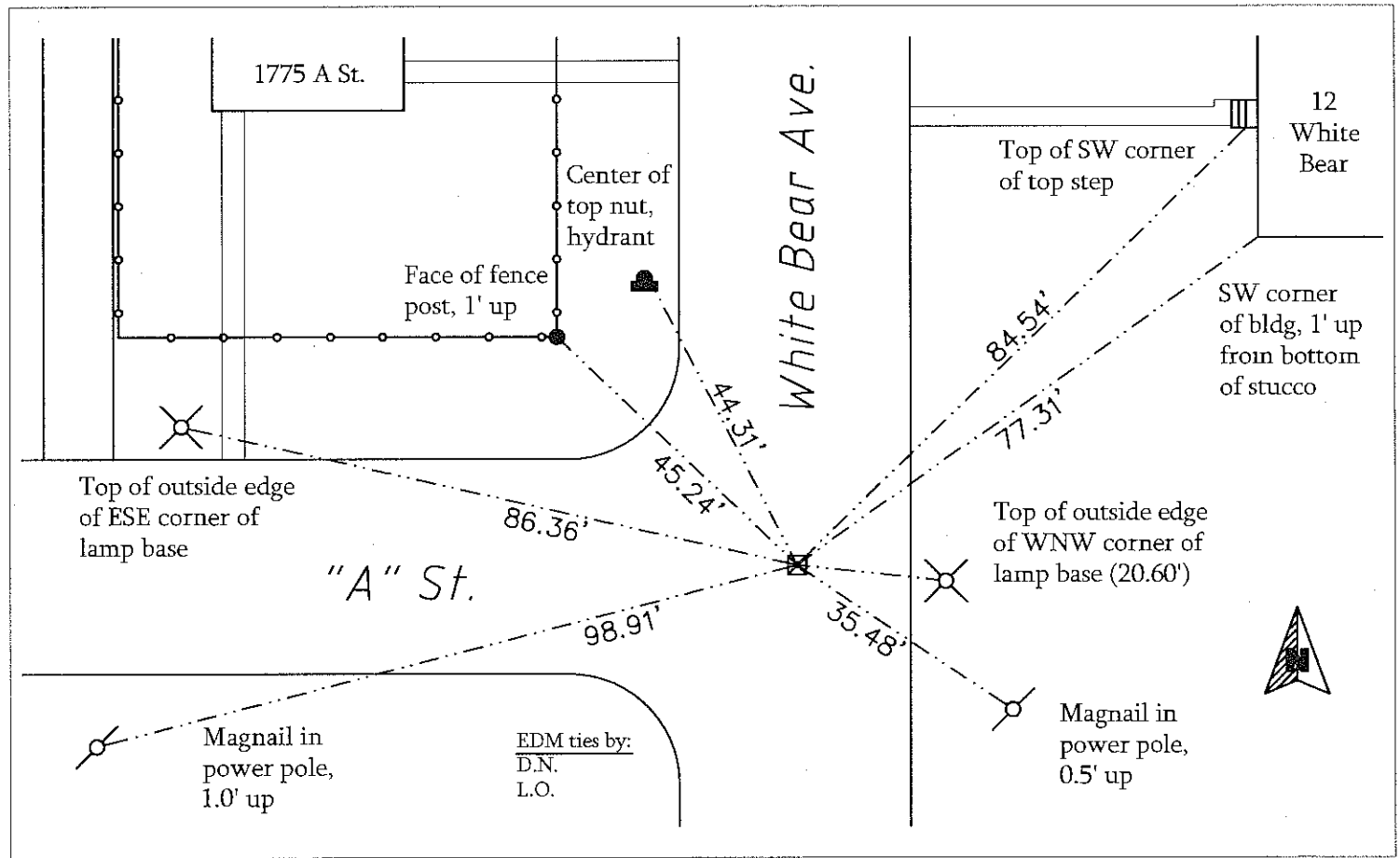
On Oct 30, 2012 found a CIM at street grade.

Note: Replaces GM that was removed during construction.

left monument as found       lowered monument       removed monument (explain)

On \_\_\_\_\_ placed a \_\_\_\_\_

SKETCH OF REFERENCE TIES



Statement of evidence relative to this corner is available from the St. Paul Public Works Dept., Survey Division

I hereby certify that this document and the data contained herein was prepared by me or under my direct supervision.

*[Signature]*  
Dec 24, 2012

Registration No. 44880  
 Land Surveyor       County Surveyor  
 Professional Engineer  
 Chief Surveyor, City of St. Paul

Office of the County Recorder, County of Ramsey  
I hereby certify that this document was filed in the county recorders office at \_\_\_\_\_ M. on the \_\_\_\_\_ day of \_\_\_\_\_

County Recorder \_\_\_\_\_  
By \_\_\_\_\_, Deputy

DOCUMENT NUMBER \_\_\_\_\_