

CERTIFICATE OF LOCATION OF GOVERNMENT CORNER

CITY MON. NO. 158

OLD INDEX NO. _____

E 1/4 Corner of Section 1 Township 28 Range 23, 4th P.M.

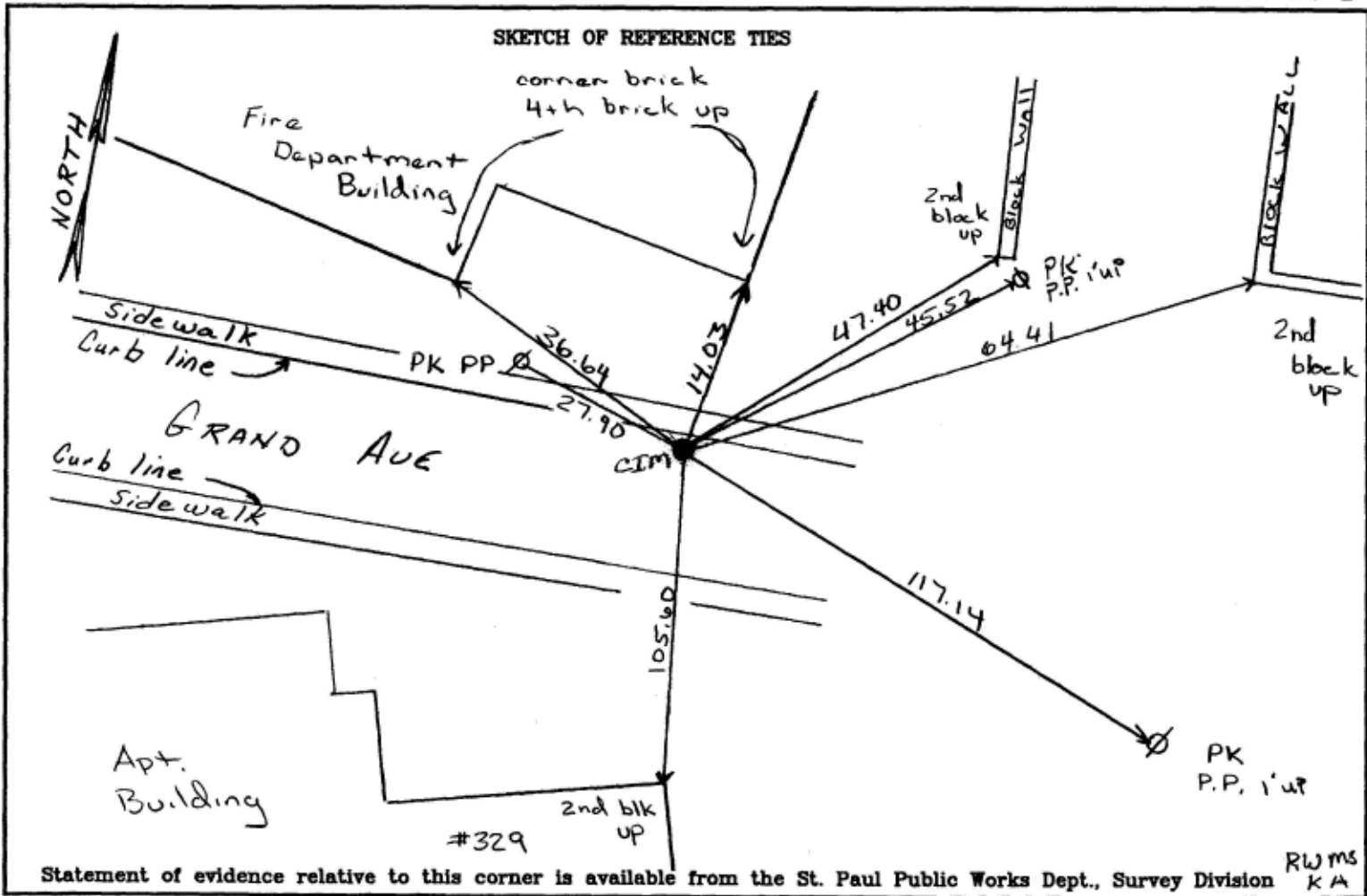
STATE OF MINNESOTA, County of Ramsey

At the corner location shown on the sketch:

On March 30, 2004 found a 4 2' straddles
date

- left monument as found
- lowered monument
- removed monument (explain)

On March 30, 2004 placed a CIM in concrete 0.02 below Asphalt
date Grade



Statement of evidence relative to this corner is available from the St. Paul Public Works Dept., Survey Division

RWms
KA

I hereby certify that this document and the data contained herein was prepared by me or under my direct supervision.

Michael P. Murphy 4/7/2004
SIGNATURE DATE

Registration No. 41,001

- Land Surveyor County Surveyor
- Professional Engineer
- Chief Surveyor, City of St. Paul

Office of The County Recorder, County of Ramsey

I hereby certify that this document was filed in the county
Recorders office at _____ M. on the _____ day of _____

County Recorder _____

By _____, Deputy

DOCUMENT NUMBER _____