

CERTIFICATE OF LOCATION OF GOVERNMENT CORNER

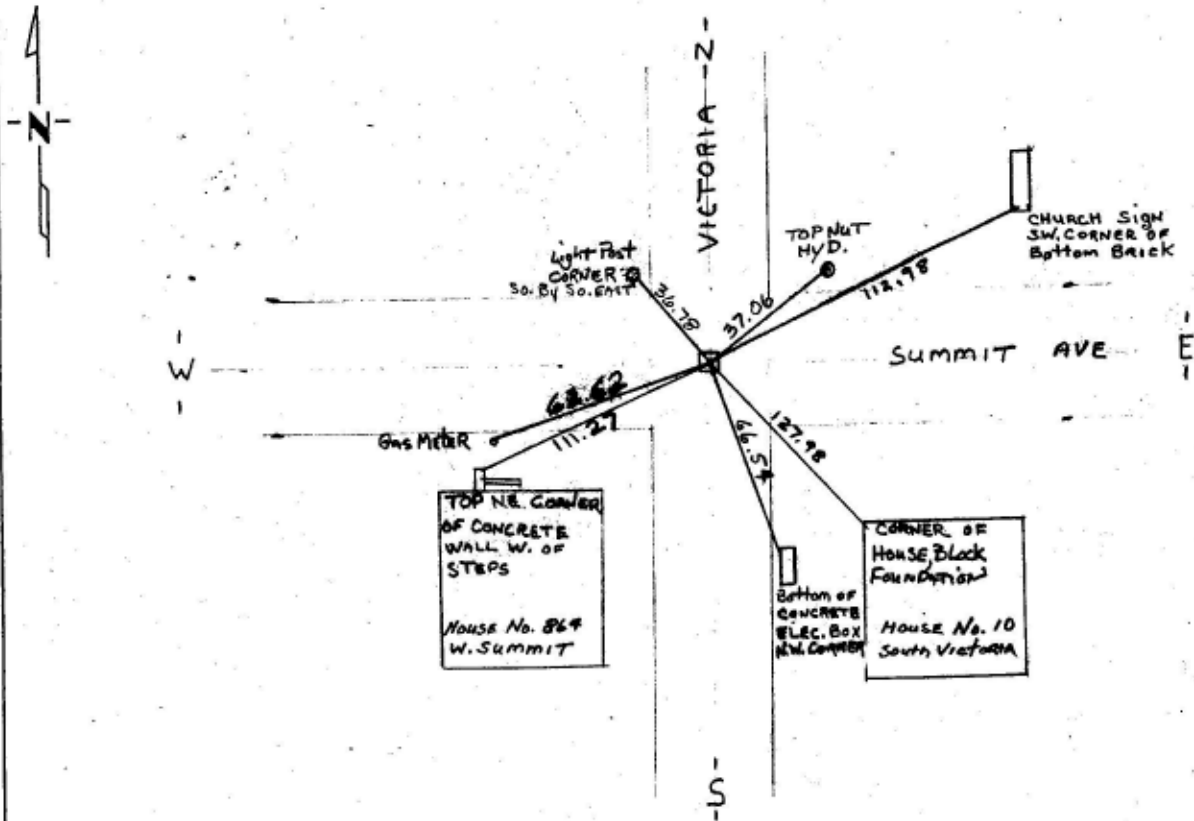
Center 1/4 Corner of Section 2, Township 29, Range 23, P.M.

STATE OF MINNESOTA, County of Ramsey

At the corner location shown on the sketch:

- On June 1994 found a Granite Monument removed for Sewer Const. Grand St. Albans CSSP
 left monument as found, lowered monument, removed monument (explain)
- On 6-29-94 placed a CIM to grade CONCRETE BASE

SKETCH OF REFERENCE TIES



Statement of evidence relative to this corner location is on back of page.

I hereby certify that this document and the data contained herein was prepared by me or under my direct supervision.

William J. Crotty SIGNATURE DATE 7/18/94

Registration No. 28576
 Land Surveyor Professional Engineer
 County Surveyor, County Engineer

OFFICE OF THE COUNTY RECORDER
County of _____

I hereby certify that this document was filed in the Co. Recorder's office at _____ M. on the _____ day of _____ A.D., 19 _____

County Recorder _____
By _____, Deputy
DOCUMENT NO. _____

Scanned 5/18/99