

# CERTIFICATE OF LOCATION OF GOVERNMENT CORNER

1/4 Corner of Section 2, Township 28, Range 23, \_\_\_\_\_ P.M.

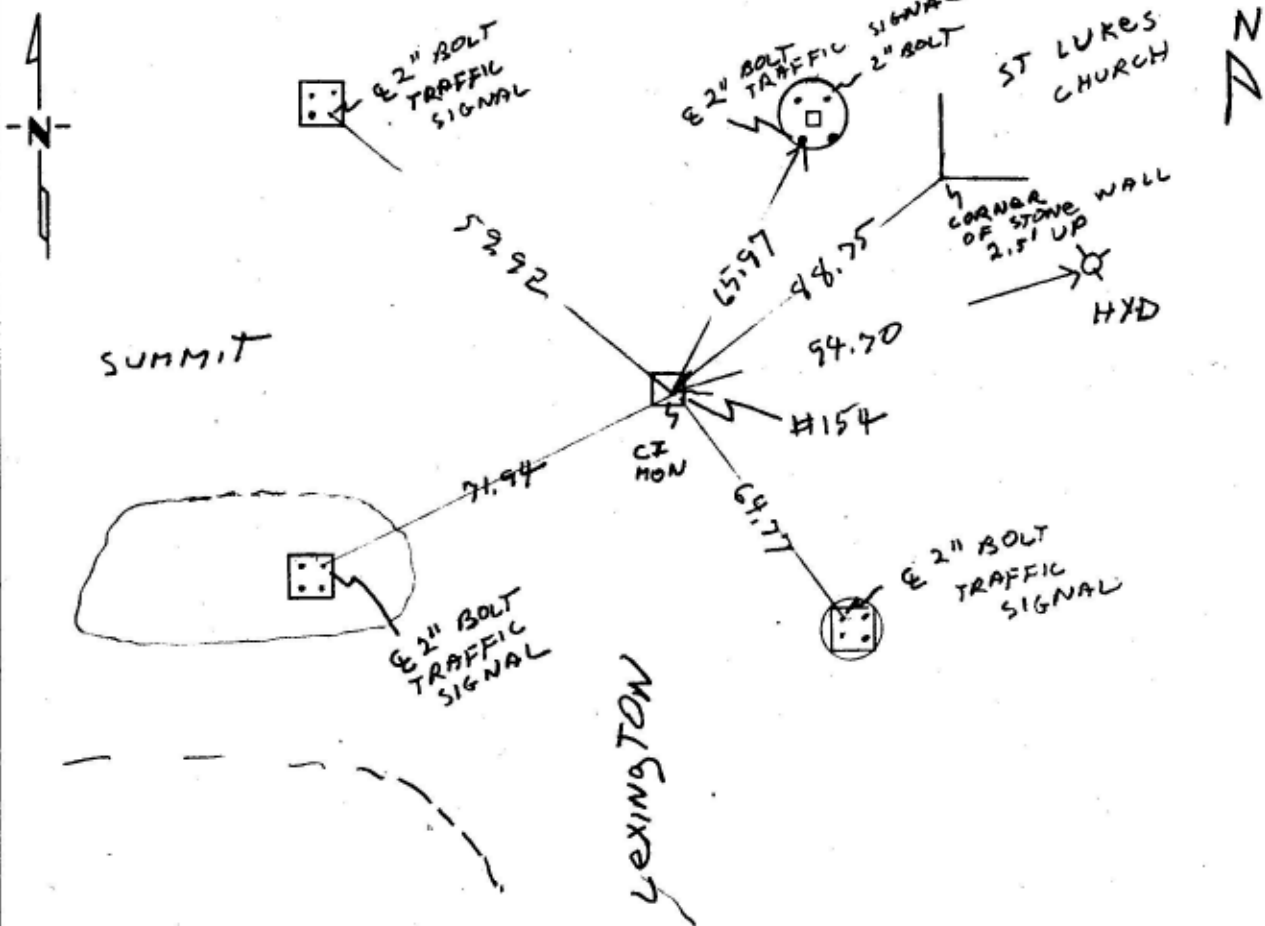
STATE OF MINNESOTA, County of RAMSEY

At the corner location shown on the sketch:

- On 22 APRIL 54 found a CAST IRON MONUMENT (REMOVED FOR SEWER SEPARATION)  
DATE
- left monument as found,  lowered monument,  removed monument (explain)
- On 8/12/94 placed a CAST IRON MONUMENT TO GRADE  
DATE

see FB 1592 p 70

### SKETCH OF REFERENCE TIES



Statement of evidence relative to this corner location is on back of page.

I hereby certify that this document and the data contained herein was prepared by me or under my direct supervision.

William J. Cutler SIGNATURE  
August 26, 1994 DATE

- Registration No. \_\_\_\_\_
- Land Surveyor,  Professional Engineer
  - County Surveyor,  County Engineer

### OFFICE OF THE COUNTY RECORDER

County of \_\_\_\_\_

I hereby certify that this document was filed in the Co. Recorders office at \_\_\_\_\_ .M. on the \_\_\_\_\_ day of \_\_\_\_\_ A.D., 19 \_\_\_\_\_

County Recorder \_\_\_\_\_

By \_\_\_\_\_, Deputy

DOCUMENT NO. \_\_\_\_\_