

CERTIFICATE OF LOCATION OF GOVERNMENT CORNER

CITY MON. NO. 152

OLD INDEX NO. 1601

1/4 ^{common to} Corner of Sections 3 & 4 Township 28 Range 23, 4 P.M.

STATE OF MINNESOTA, County of Ramsey

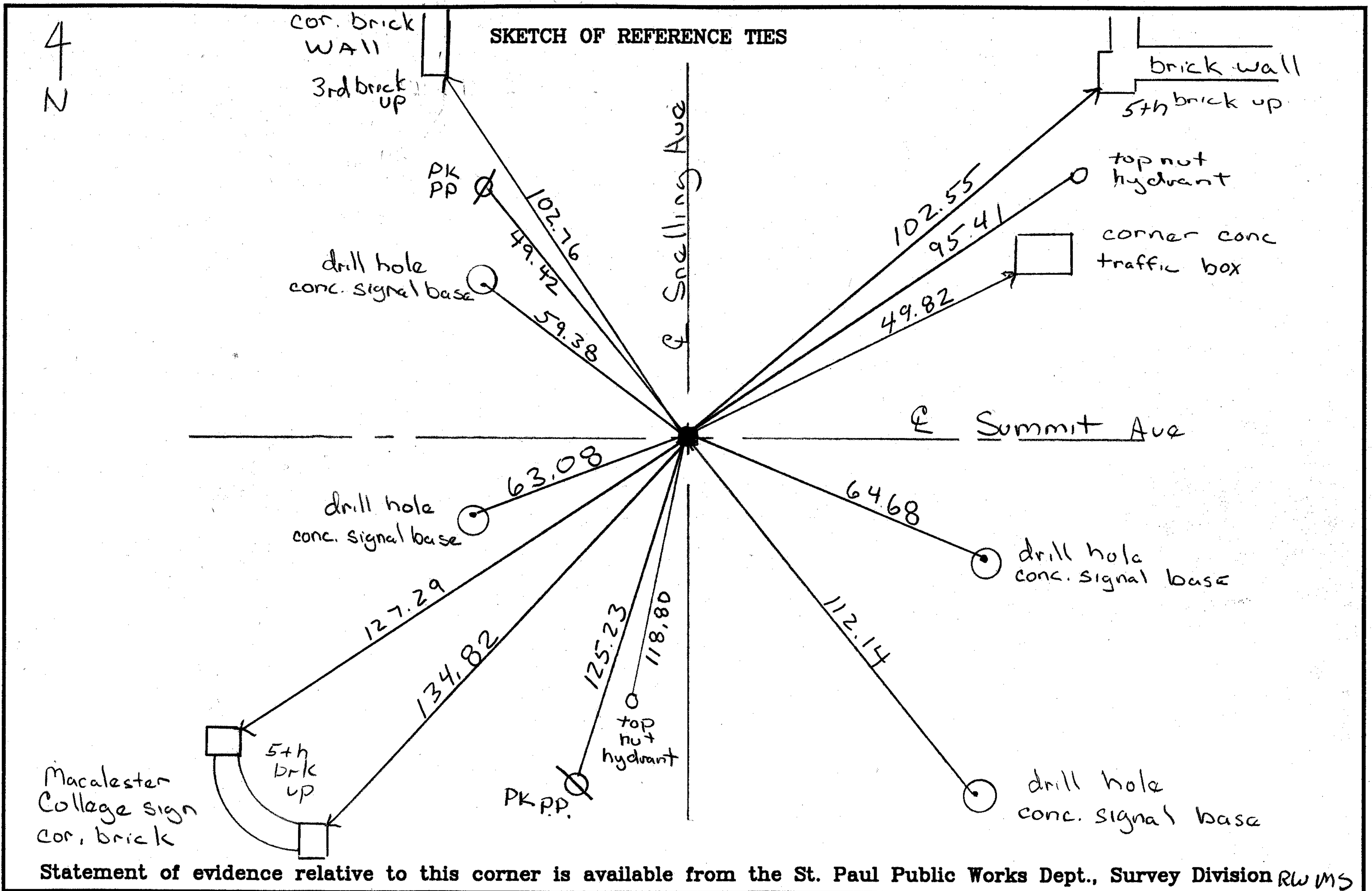
At the corner location shown on the sketch:

On Sept 18, 2004 found a 6m 0.42 Below Asphalt surface

placed 1 foot Dia. Casting over monument

left monument as found lowered monument removed monument (explain)

On _____ placed a _____
date



I hereby certify that this document and the data contained herein was prepared by me or under my direct supervision.

Michael P Murphy Nov 2, 2004
SIGNATURE DATE

Registration No. 41,001

Land Surveyor County Surveyor

Professional Engineer

Chief Surveyor, City of St. Paul

Office of The County Recorder, County of Ramsey

I hereby certify that this document was filed in the county
Recorders office at _____ .M. on the _____ day of _____

County Recorder _____

By _____, Deputy

DOCUMENT NUMBER _____

0152-1601-A2

10-30-2004

Bm	2.06	255.12		253.06		HYD NEC Snelling & Summit
			5.75	249.37		Top GM #152
			5.33	249.79		Top casting
Bm			2.90	252.22	252.24	HYD SWC Snelling & Summit