

CERTIFICATE OF LOCATION OF GOVERNMENT CORNER

CITY MON. NO. 150

OLD INDEX NO. 1706

QUARTER Corner ^{COMMON TO} ~~of~~ Sections 4 & 5 Township 28 Range 23, 4 P.M.

STATE OF MINNESOTA, County of Ramsey

At the corner location shown on the sketch:

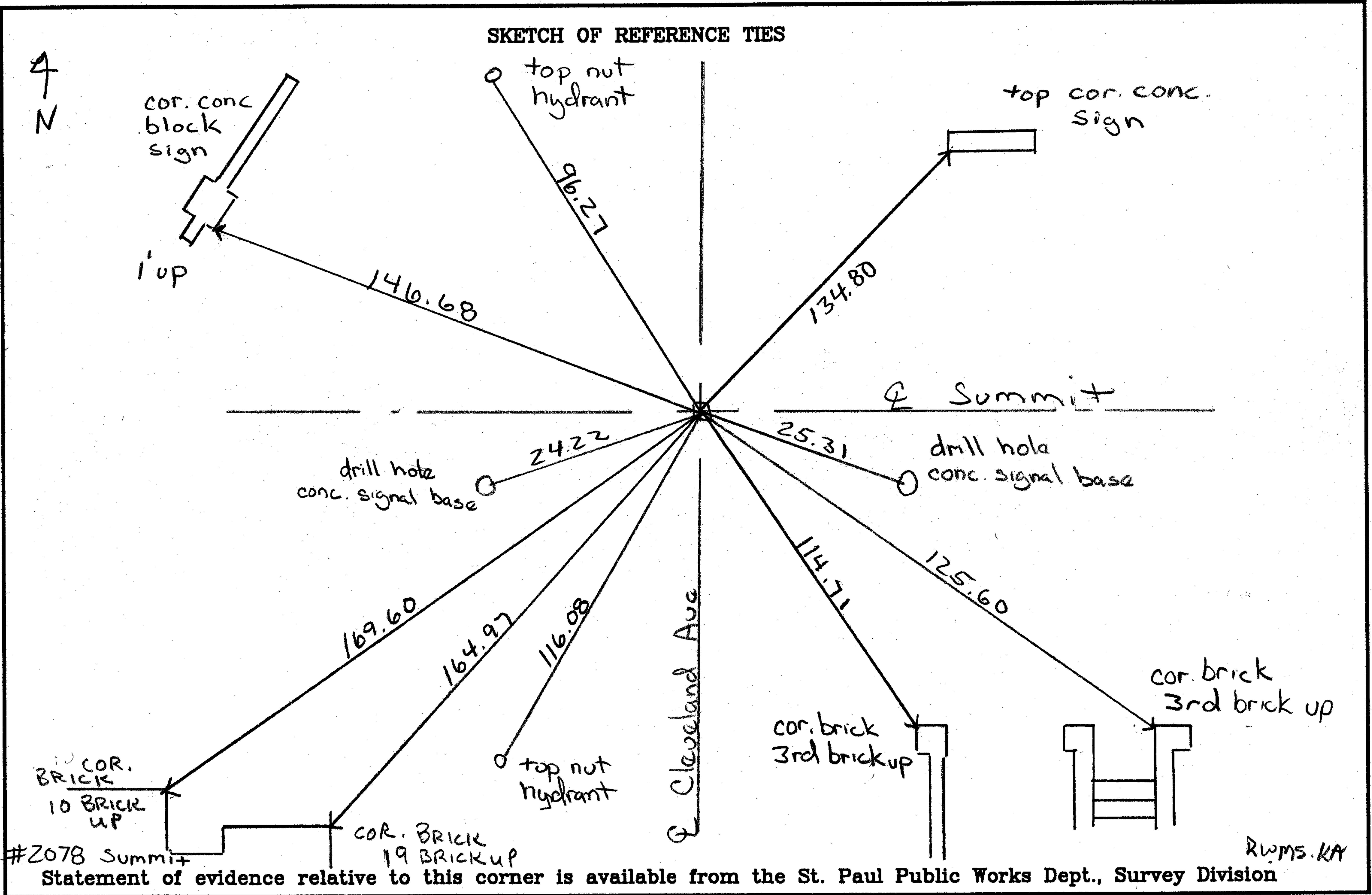
On Aug 12, 2004 found a GM 0.25 below grade with

3/4" Iron pin in center (bent over)

left monument as found lowered monument removed monument (explain)

On Aug 14, 2004 placed a small MH casting OVER GM

SKETCH OF REFERENCE TIES



I hereby certify that this document and the data contained herein was prepared by me or under my direct supervision.

Michael P Murphy 8/12/04
SIGNATURE DATE

Registration No. 41001

Land Surveyor County Surveyor

Professional Engineer

Chief Surveyor, City of St. Paul

Office of The County Recorder, County of Ramsey

I hereby certify that this document was filed in the county

Recorders office at _____ M. on the _____ day of _____

County Recorder _____

By _____, Deputy

DOCUMENT NUMBER _____

FB 1735

ELEVATIONS ON

GM # 150 @

SUMMIT & CLEVELAND

8-14-04 50

RW
S
KA

Bm 3.66 195.52

191.86

Hyd SWC SUMMIT & CLEVELAND

6.54 188.98

TOP GM # 150

6.30 189.22

TOP CASTING OVER GM

Bm

4.72 190.80 (190.81)

Hyd NWC SUMMIT & CLEVELAND