

# CERTIFICATE OF LOCATION OF GOVERNMENT CORNER

City ID: 0149Old Index #: 1079County ID #: 0603

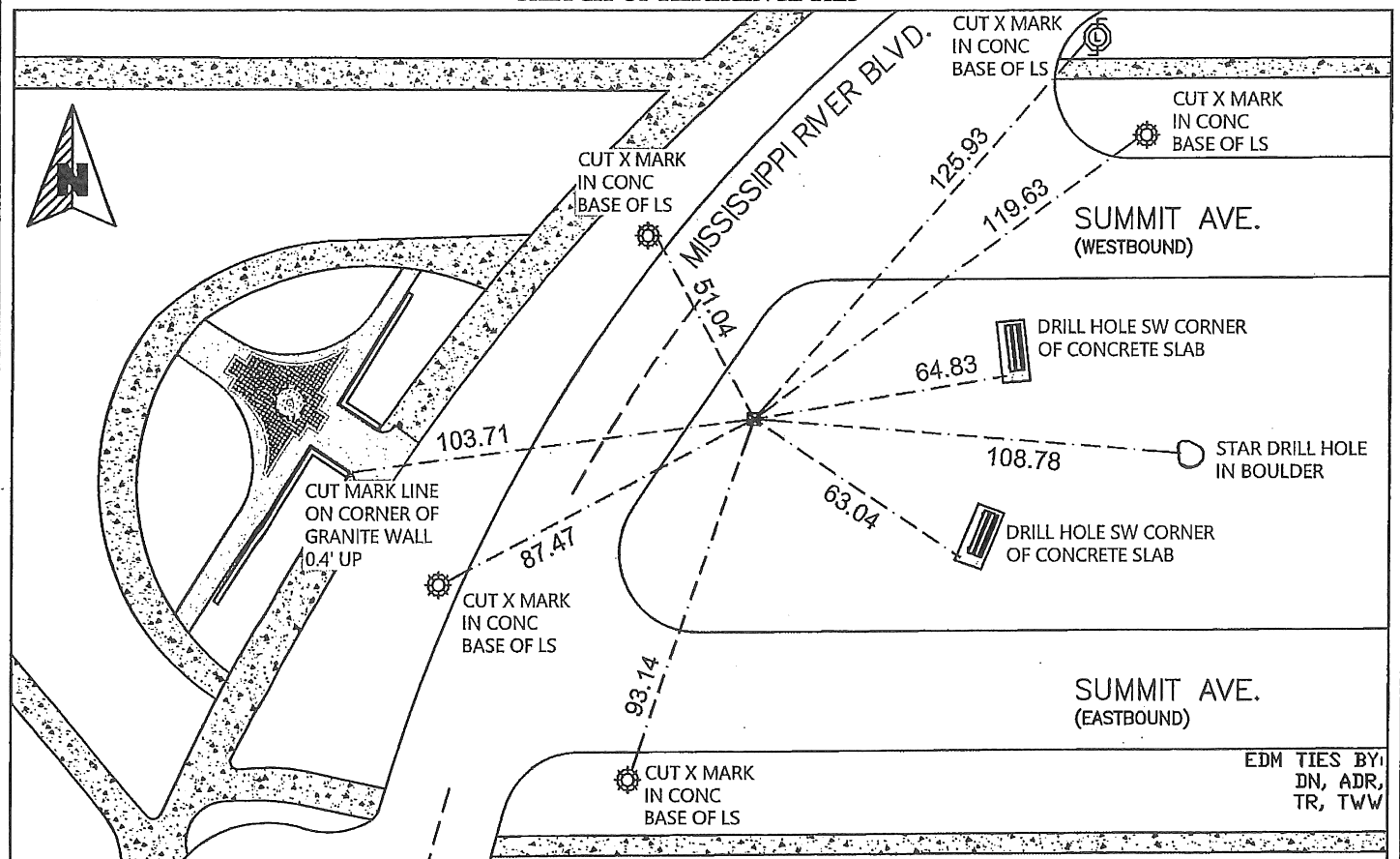
Center \_\_\_\_\_ Corner of Section 05, Township 28 North,  
Range 23 West, Fourth Principal Meridian, County of Ramsey, State of Minnesota,  
At the corner location shown on the sketch:

On August 14, 2024 found GM at surface grade. Checked existing ties and set  
new ties using Trimble S6 Total Station using peanut prism.

☒ left monument as found      ☐ lowered monument      ☐ removed monument (explain)

On \_\_\_\_\_ placed a \_\_\_\_\_

SKETCH OF REFERENCE TIES



ALL DISTANCES ARE SHOWN IN U.S. SURVEY FEET.

I hereby certify that this survey, plan, or report was prepared by me, or under my direct supervision, and that I am a duly Licensed Land Surveyor under the laws of the State of Minnesota.

Kevin A. Kaley  
Kevin Kaley, LS  
City Surveyor, Saint Paul, Minnesota

1/16/2025  
Date

Registration No. #53546

Office of the County Surveyor, Ramsey County, Minnesota

I hereby certify that this document was filed with the County Surveyor's Office at \_\_\_\_\_ M. on the 3rd day of

April, 2025

Daniel H. Baar

Daniel Baar, LS  
County Surveyor, Ramsey County, Minnesota

# STATEMENT OF EVIDENCE

August 14, 2024

Fd. GM at surface grade. Checked ties and placed new ties using Trimble S6 Total Station.  
Photos taken of new ties.

February 14, 2008

Fd GM 0.3 ft below grade. Photos taken.

January 12, 2005

Position on GM established by RTK-VRS GPS Elev 836.2 ft.

February 28, 2002

Elev 142.16 ft on GM 0.10 ft below grass surface. See FB 1736 p.29

September 20, 1995

Fd GM (marked for fabric for 1995 aerial)

February 28, 1987

(Unknown date Mar \_\_, 1987 ) GM set to grade in center island E. side of Miss. River Blvd.

January 31, 1985

(Unknown date Feb \_\_, 1985 ) Elev 142.22 ft on ?. See FB 1421A p.70

July 20, 1902

Monument visited by J B Irvine while running out land lines in connection with Mississippi River Blvd. See FB 474 p.1

September 30, 1887

(Unknown date Oct \_\_, 1887 ) Monument set by J H Armstrong