

# CERTIFICATE OF LOCATION OF GOVERNMENT CORNER

City ID: 0146  
Old Index #: 2219

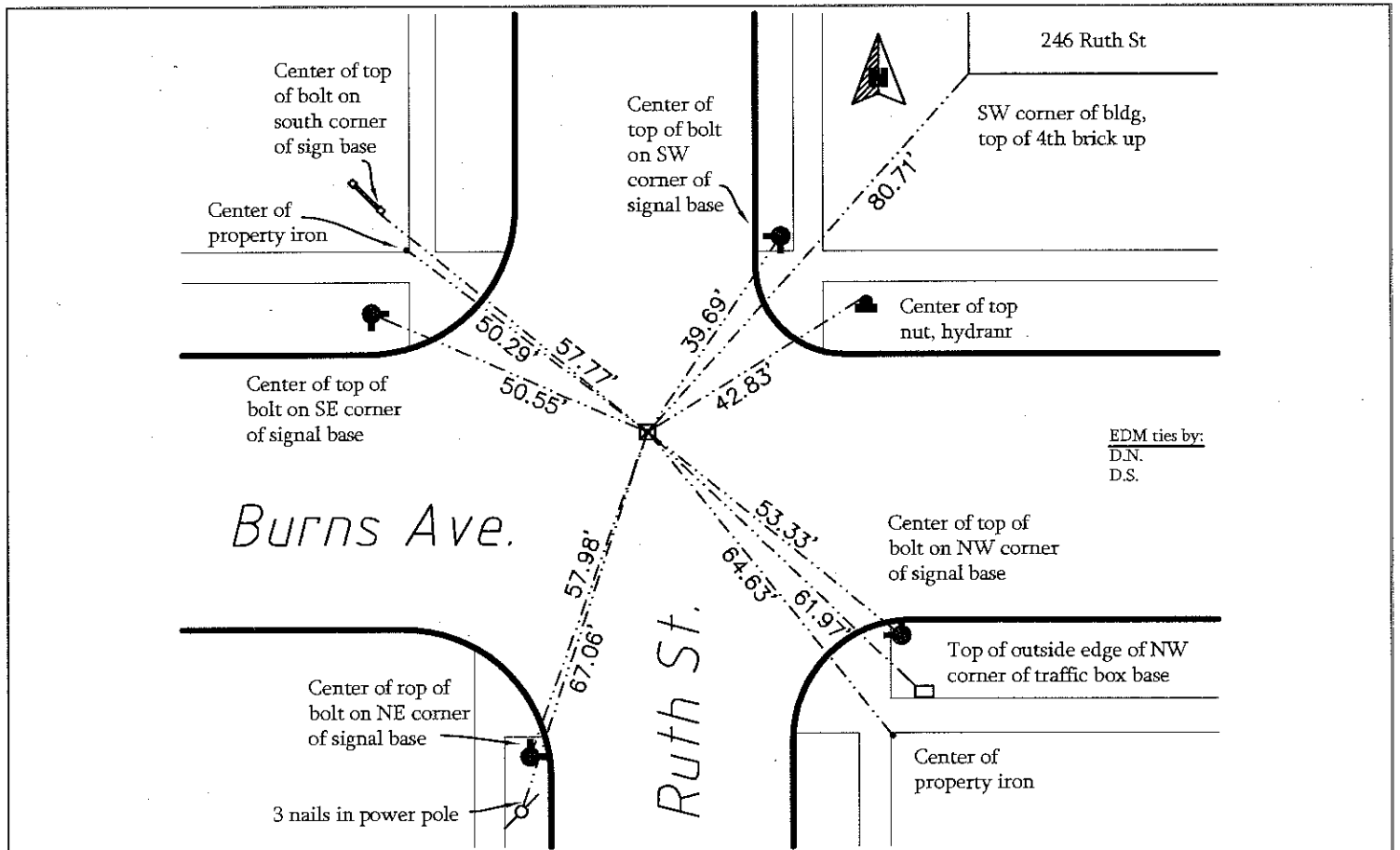
N 1/4 Corner of Section 2 Township 28 Range 22, 4th P.M.  
STATE OF MINNESOTA, County of Ramsey  
At the corner location shown on the sketch:

On Oct 15, 2012 ~~found a~~ set CIM to street grade based on 1993 ties  
to GM (GM was removed during construction)

left monument as found       lowered monument       removed monument (explain)

On \_\_\_\_\_ placed a \_\_\_\_\_

SKETCH OF REFERENCE TIES



EDM ties by:  
D.N.  
D.S.

Statement of evidence relative to this corner is available from the St. Paul Public Works Dept., Survey Division

I hereby certify that this document and the data contained herein was prepared by me or under my direct supervision.

*[Signature]*  
JAN 2, 2012

Registration No. 44880

- Land Surveyor       County Surveyor
- Professional Engineer
- Chief Surveyor, City of St. Paul

Office of the County Recorder, County of Ramsey  
I hereby certify that this document was filed in the county recorders office at \_\_\_\_\_ M. on the \_\_\_\_\_ day of \_\_\_\_\_

County Recorder \_\_\_\_\_

By \_\_\_\_\_, Deputy

DOCUMENT NUMBER \_\_\_\_\_