

CERTIFICATE OF LOCATION OF GOVERNMENT CORNER

NE. Corner of Section 3 Township 28 Range 22, 4 P.M.

STATE OF MINNESOTA, County of Ramsey

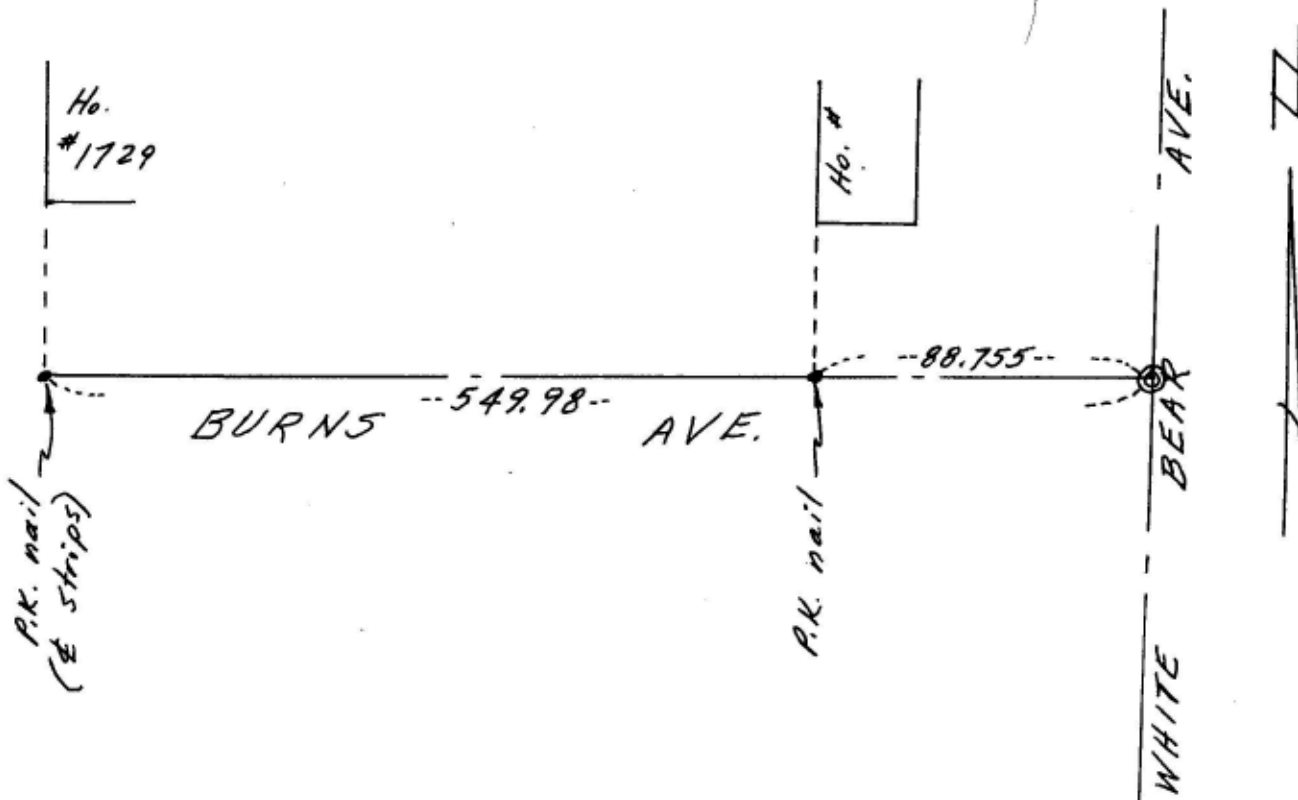
At the corner location shown on the sketch:

On May 18, 1995 found a cast iron monument; reference
ties and removed monu. for milling work.

- left monument as found
- lowered monument
- removed monument (explain)

On May 20, 1996 placed a 20" cast iron monu. and cement.

SKETCH OF REFERENCE TIES



Statement of evidence relative to this corner is available from St. Paul Public Works Dept., Survey Division

I hereby certify that this document and the data contained herein was prepared by me or under my direct supervision.

Ronald F. Meyer 7-16-96
SIGNATURE DATE

- Registration No. 9051
- Land Surveyor
 - County Surveyor
 - Professional Engineer
 - Chief Surveyor, City of St. Paul

Office of The County Recorder, County of Ramsey

I hereby certify that this document was filed in the county

Recorders office at _____ m. on the _____ day of _____

County Recorder _____

By _____, Deputy

DOCUMENT NUMBER _____