

CERTIFICATE OF LOCATION OF GOVERNMENT CORNER

MON. NO. 143
OLD INDEX No 115

SOUTHWEST Corner of Section 34 Township 29 Range 22, 4TH. P.M.

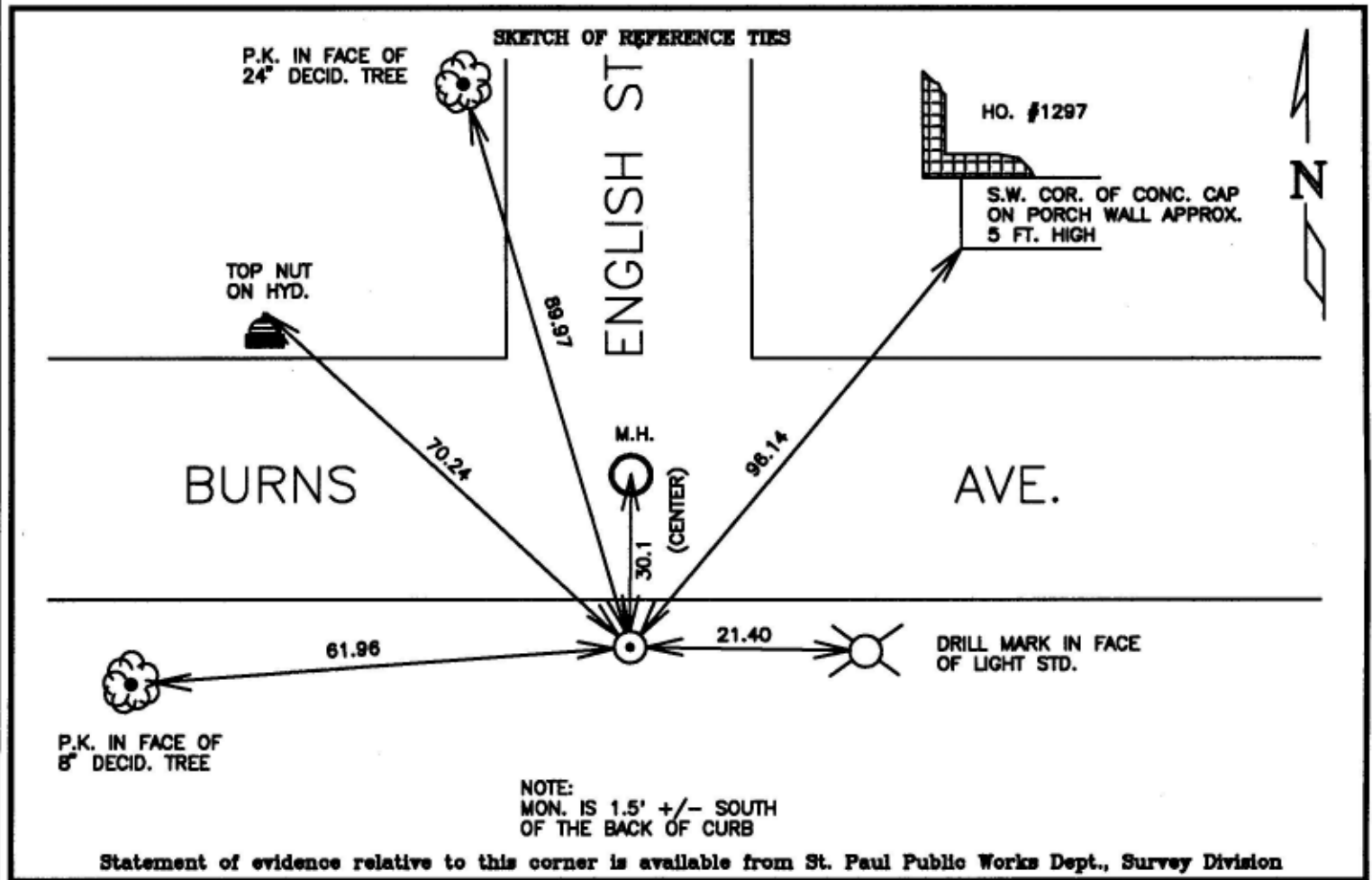
STATE OF MINNESOTA, County of Ramsey

At the corner location shown on the sketch:

On DEC. 13, 1995 found a C.I.M., .3' +/- BELOW GRADE AND
RE-TIED.

left monument as found lowered monument removed monument (explain)

On _____ placed a _____



I hereby certify that this document and the data contained herein was prepared by me or under my direct supervision.

Richard C. Benson DEC. 28, 1995
SIGNATURE DATE

Registration No. 23300

- Land Surveyor County Surveyor
 Professional Engineer
 Chief Surveyor, City of St. Paul

Office of The County Recorder, County of Ramsey

I hereby certify that this document was filed in the county
Recorders office at _____ m. on the _____ day of _____

County Recorder _____
By _____, Deputy
DOCUMENT NUMBER _____