

CERTIFICATE OF LOCATION OF GOVERNMENT CORNER

City ID: 0142

Old Index #: 0113A

N 1/4 Corner of Section 4 Township 28 Range 22, 4th P.M.

STATE OF MINNESOTA, County of Ramsey

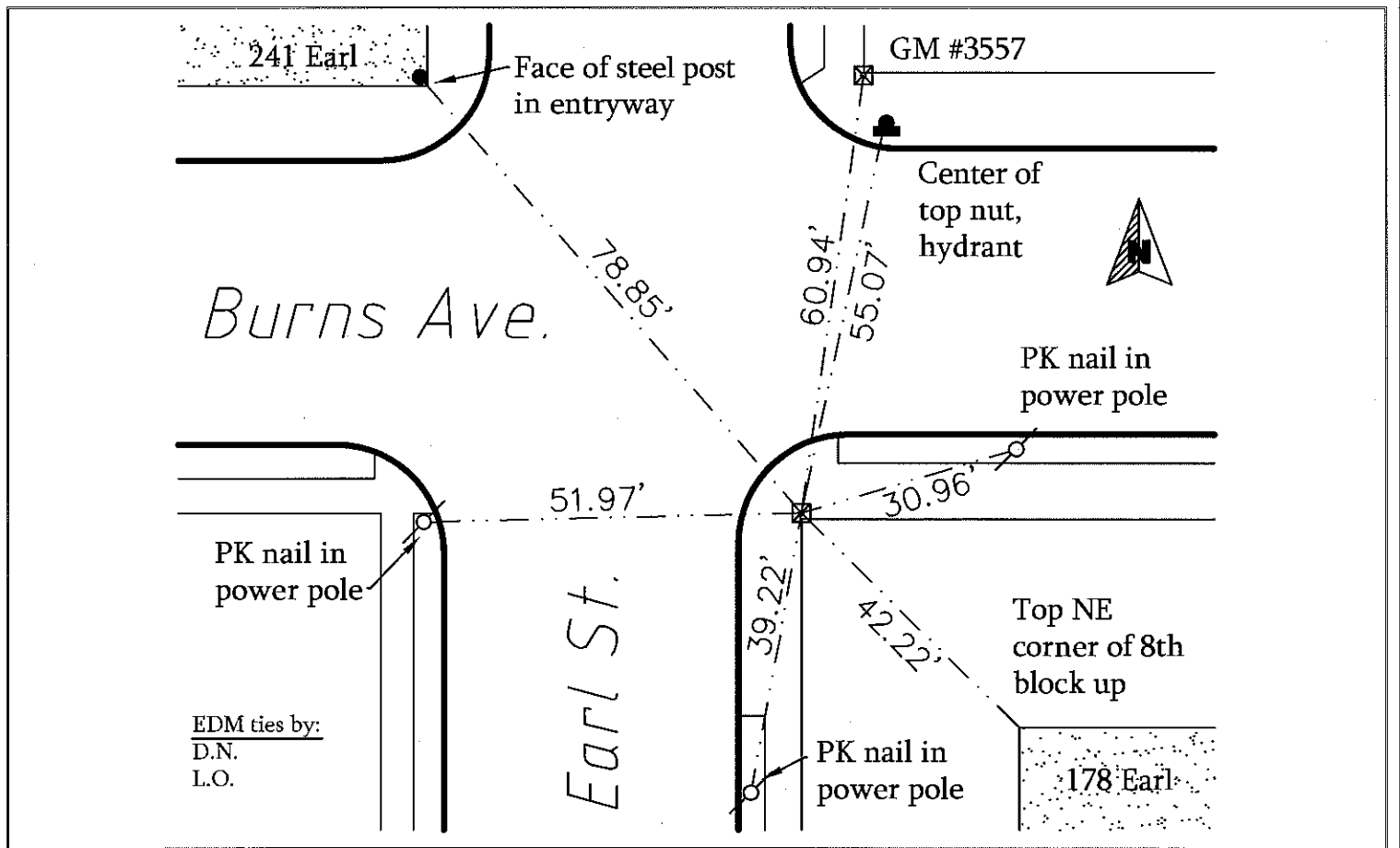
At the corner location shown on the sketch:

On May 10, 2012 found a CIM missing at location.

- left monument as found
 lowered monument
 removed monument (explain)


On May 10, 2012 placed a new CIM at location using 10/6/2006 ties.

SKETCH OF REFERENCE TIES



Statement of evidence relative to this corner is available from the St. Paul Public Works Dept., Survey Division

I hereby certify that this document and the data contained herein was prepared by me or under my direct supervision.


Aug 31, 2012
 Registration No. 44880

- Land Surveyor County Surveyor
 Professional Engineer
 Chief Surveyor, City of St. Paul

Office of the County Recorder, County of Ramsey

I hereby certify that this document was filed in the county recorders office at _____ M. on the _____ day of _____

County Recorder _____

By _____, Deputy

DOCUMENT NUMBER _____