

CERTIFICATE OF LOCATION OF GOVERNMENT CORNER

CITY MON. NO. 141

OLD INDEX NO. 111

South West Corner of Section 33 Township 29 Range 22, 4th P.M.

STATE OF MINNESOTA, County of Ramsey

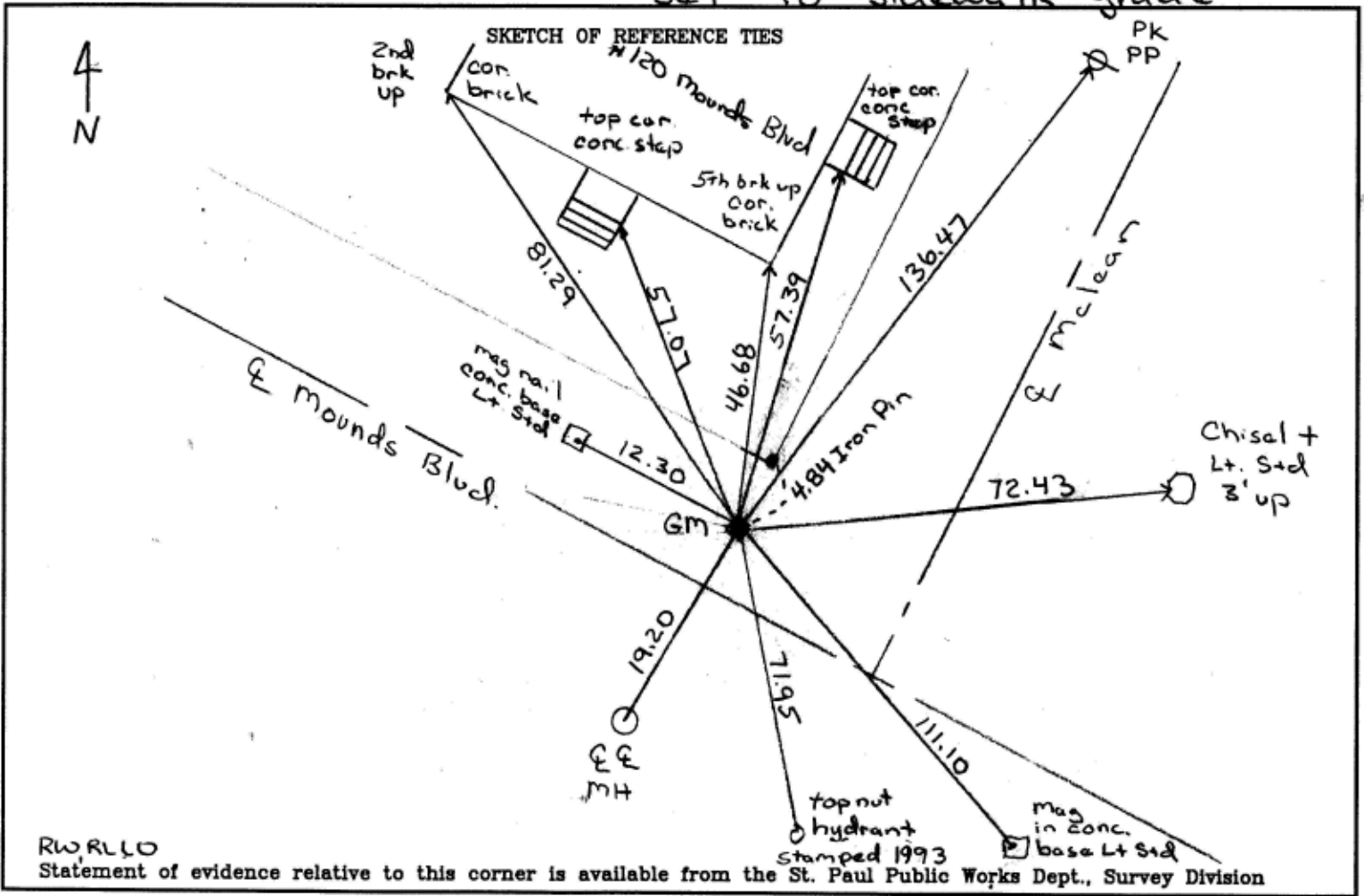
At the corner location shown on the sketch:

On Nov. 1, 2006 found a G.M. 0.5' below sidewalk grade

Found D.H. in well approx. 0.1 ft SE'ly of hole in G.M.

- left monument as found
- lowered monument
- removed monument (explain)

On Nov 1, 2006 placed a rebar with brass cap in G.M. and set to sidewalk grade



RW RLLD
Statement of evidence relative to this corner is available from the St. Paul Public Works Dept., Survey Division

I hereby certify that this document and the data contained herein was prepared by me or under my direct supervision.

Michael P. Murphy Nov. 3, 2006
SIGNATURE DATE

Registration No. 41,001

- Land Surveyor
- County Surveyor
- Professional Engineer
- Chief Surveyor, City of St. Paul

Office of The County Recorder, County of Ramsey

I hereby certify that this document was filed in the county
Recorders office at _____ M. on the _____ day of _____

County Recorder _____

By _____, Deputy

DOCUMENT NUMBER _____