

CERTIFICATE OF LOCATION OF GOVERNMENT CORNER

CITY MON. NO. 139

OLD INDEX NO. 109

NE Corner of Section 6 Township 28 Range 22, 4 P.M.

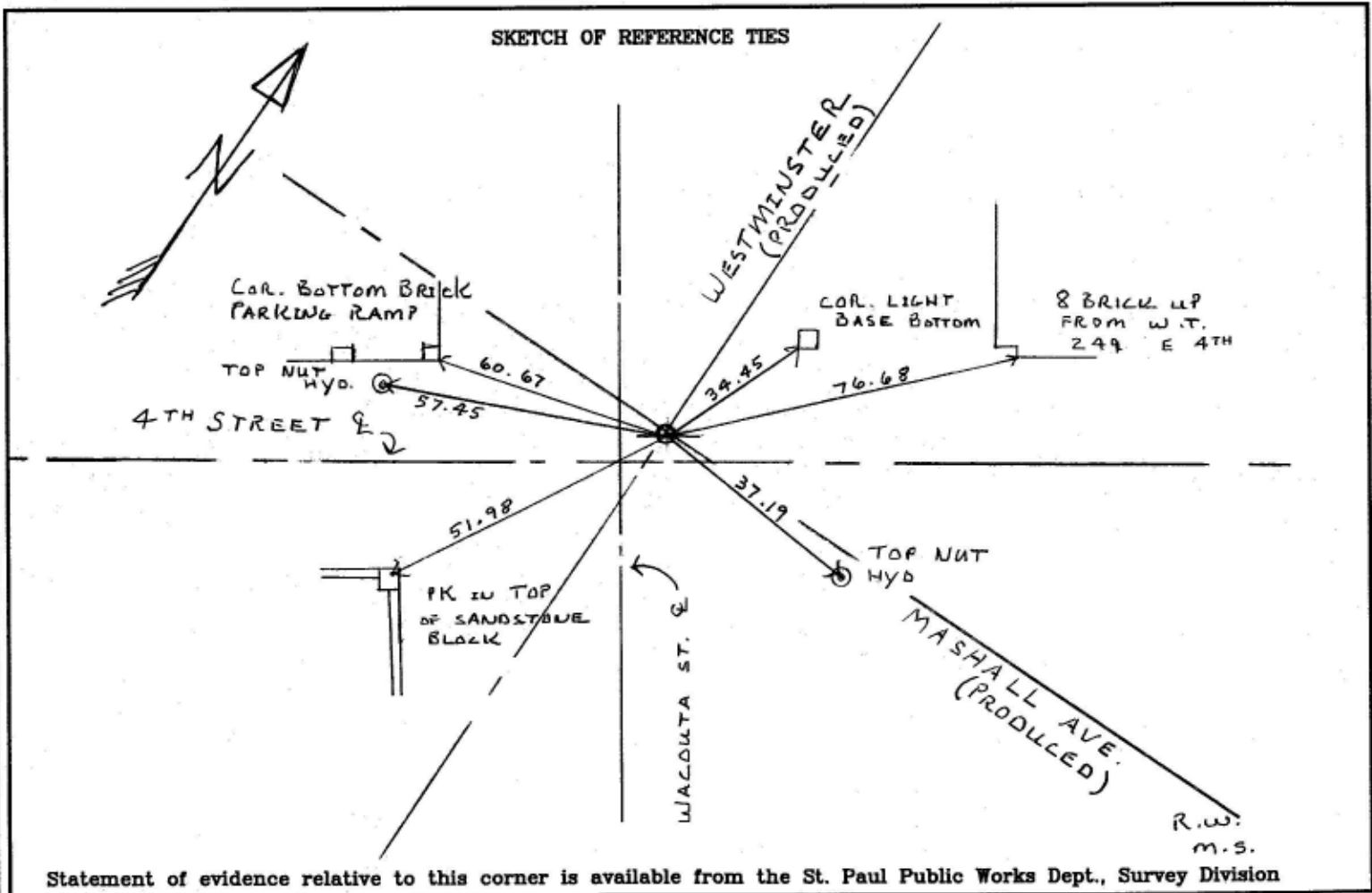
STATE OF MINNESOTA, County of Ramsey

At the corner location shown on the sketch:

On July 30, 2003 found a IRON PIN @ GRADE
date

- left monument as found
- lowered monument
- removed monument (explain)

On August 20, 2003 placed a CIM IN CONC. TO ASPHALT GRADE
date



Statement of evidence relative to this corner is available from the St. Paul Public Works Dept., Survey Division

I hereby certify that this document and the data contained herein was prepared by me or under my direct supervision.

Michael P. Murphy 11/18/03
SIGNATURE DATE

Registration No. 41001

- Land Surveyor
- County Surveyor
- Professional Engineer
- Chief Surveyor, City of St. Paul

Office of The County Recorder, County of Ramsey

I hereby certify that this document was filed in the county
Recorders office at _____ M. on the _____ day of _____

County Recorder _____

By _____, Deputy

DOCUMENT NUMBER _____