

CERTIFICATE OF LOCATION OF GOVERNMENT CORNER

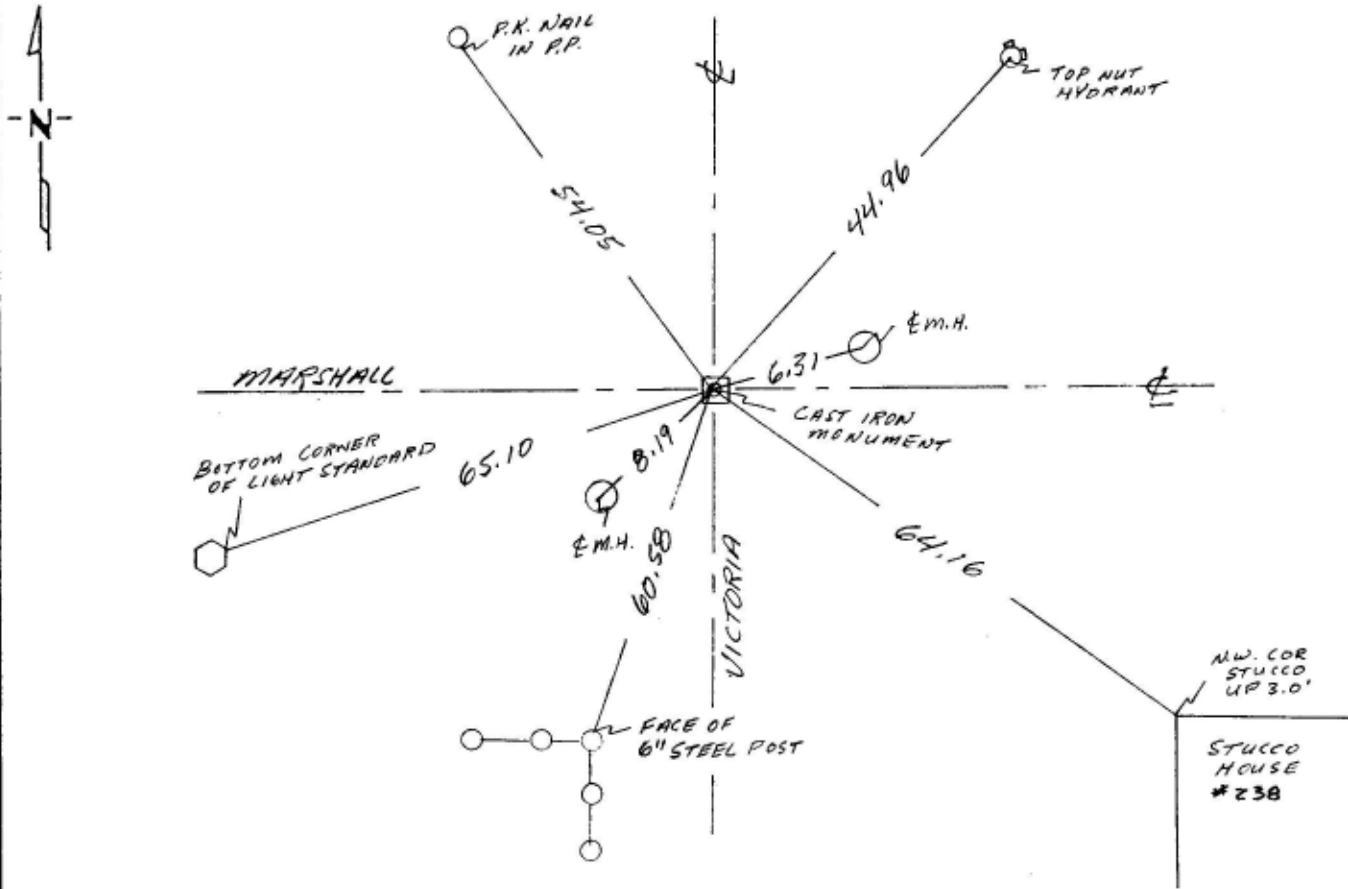
South 1/4 Corner of Section 35, Township 29, Range 23, 4th P.M.

STATE OF MINNESOTA, County of Ramsey

At the corner location shown on the sketch:

- On SEPT. 22, 1995 found a CAST IRON MONUMENT 0.20' BELOW GRADE
DATE
- left monument as found, lowered monument, removed monument (explain)
- On _____ placed a _____
DATE

SKETCH OF REFERENCE TIES



SKETCH BY: K. MARGL

Statement of evidence relative to this corner location is on back of page.

I hereby certify that this document and the data contained herein was prepared by me or under my direct supervision.

Kulhem A. Catey Sept 23, 1995
SIGNATURE DATE

Registration No. _____

Land Surveyor, Professional Engineer

County Surveyor, County Engineer

OFFICE OF THE COUNTY RECORDER
County of _____

I hereby certify that this document was filed in the Co. Recorders office at _____ .M. on the _____ day of _____ A.D., 19 _____

County Recorder _____
By _____, Deputy

DOCUMENT NO. _____

Scanned 5/14/99