

CERTIFICATE OF LOCATION OF GOVERNMENT CORNER

CITY MON. NO. 131

OLD INDEX NO. 1011

South West Corner of Section 34 Township 29 Range 23, 4TH P.M.

STATE OF MINNESOTA, County of Ramsey

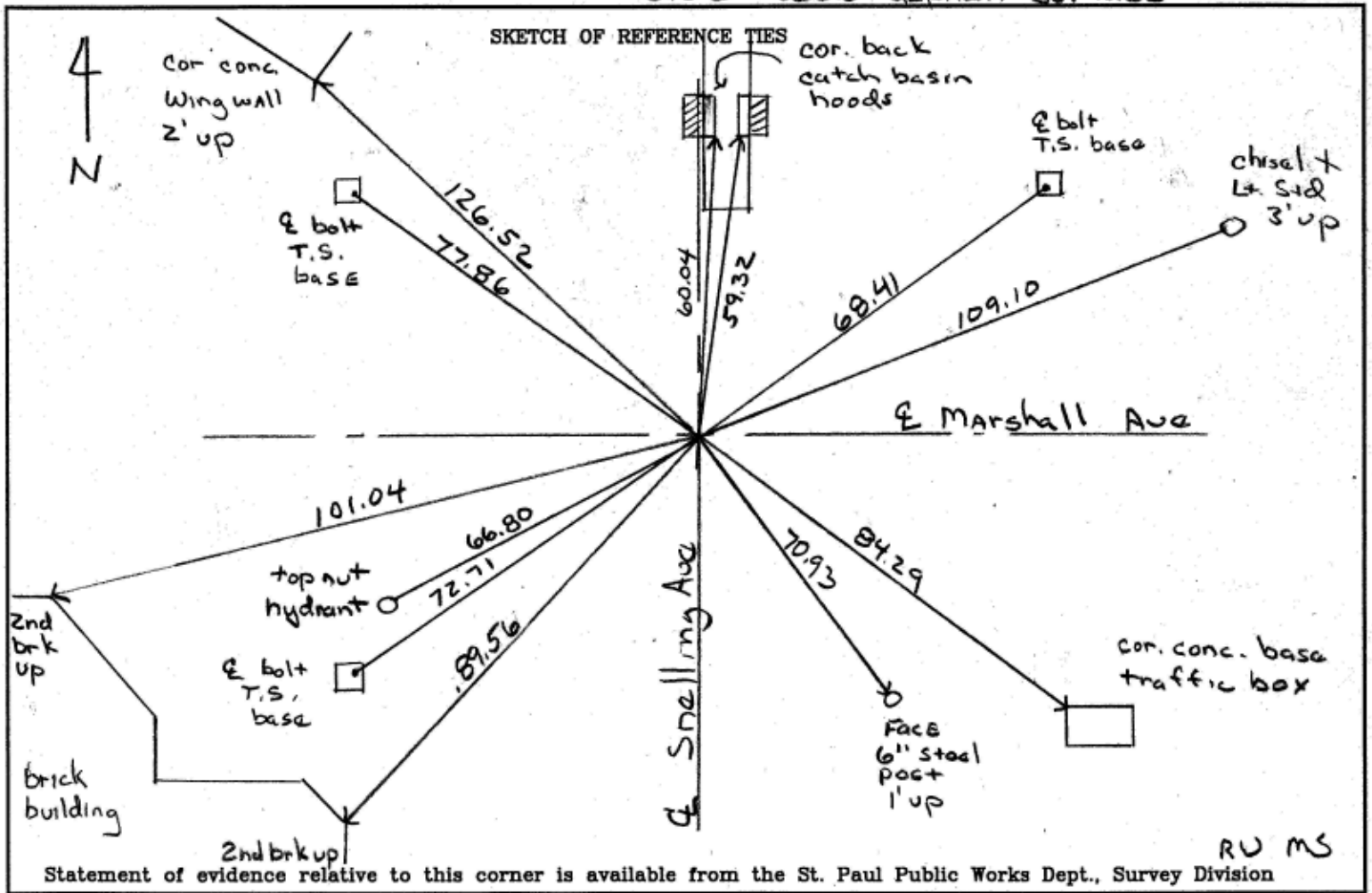
At the corner location shown on the sketch:

On Sept 25, 2004 found a top broken off CIM 0.10 below

asphalt surface placed 2 foot straddles

- left monument as found
- lowered monument
- removed monument (explain)

On Sept 25, 2004 placed a CIM stamped Corner Section in same position
0.02 below asphalt surface



I hereby certify that this document and the data contained herein was prepared by me or under my direct supervision.

Michael P Murphy 9/27/04
SIGNATURE DATE

Registration No. 41,001

- Land Surveyor
- County Surveyor
- Professional Engineer
- Chief Surveyor, City of St. Paul

Office of The County Recorder, County of Ramsey

I hereby certify that this document was filed in the county
Recorders office at _____ M. on the _____ day of _____

County Recorder _____

By _____, Deputy

DOCUMENT NUMBER _____