

CERTIFICATE OF LOCATION OF GOVERNMENT CORNER

CITY MON. NO. 128

OLD INDEX NO. 1080

NORTH 1/4 Corner of Section 5 Township 28 Range 23, 4 TH P.M.

STATE OF MINNESOTA, County of Ramsey

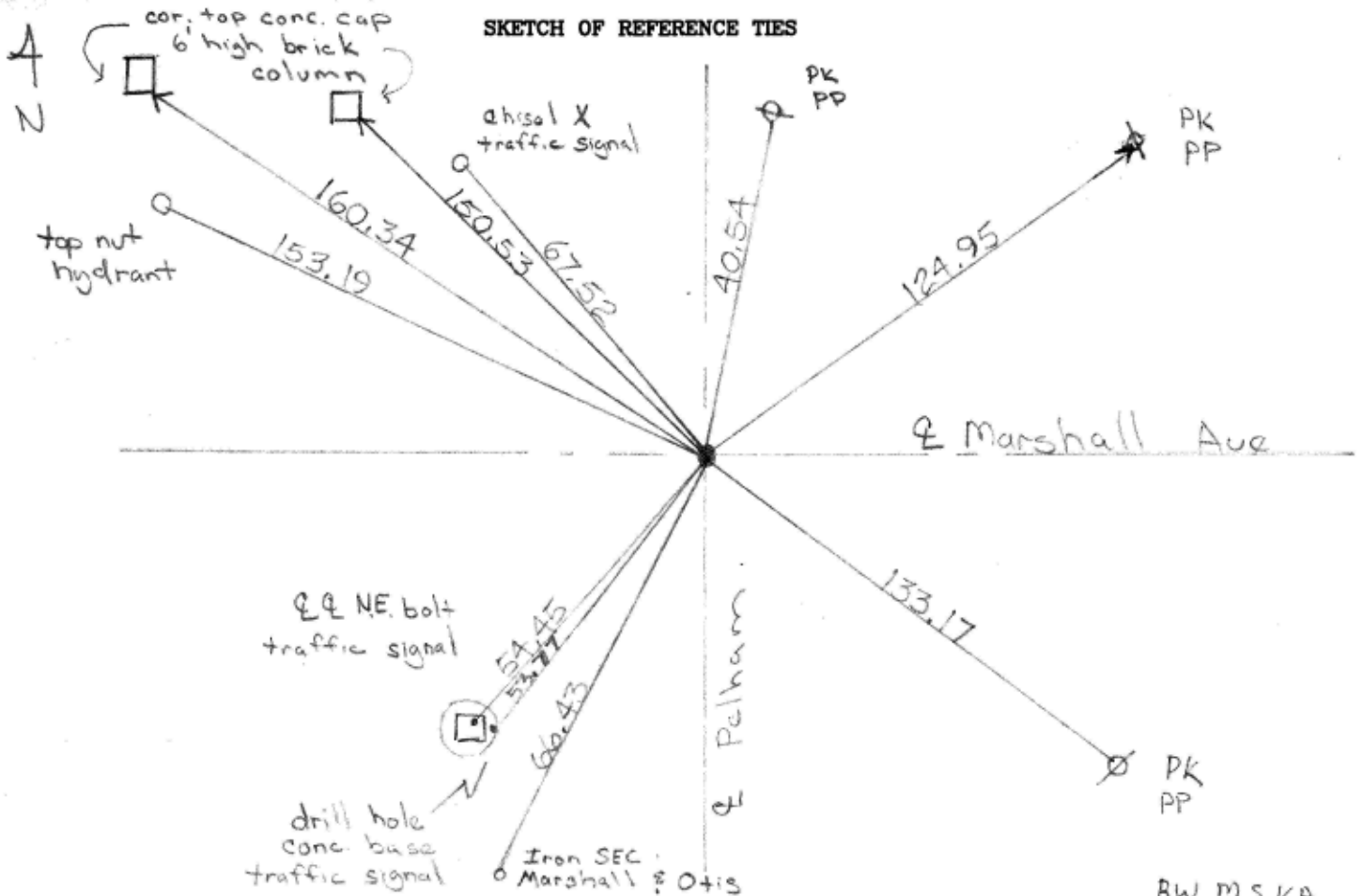
At the corner location shown on the sketch:

On Aug 21, 2004 found a broken off cim 0.5' below
date asphalt surface

- left monument as found
- lowered monument
- removed monument (explain)

On Aug 21, 2004 placed a cim 0.04' below surface
date

SKETCH OF REFERENCE TIES



Statement of evidence relative to this corner is available from the St. Paul Public Works Dept., Survey Division

I hereby certify that this document and the data contained herein was prepared by me or under my direct supervision.

Michael P. Murphy 8/23/04
SIGNATURE DATE

Registration No. 41,001

- Land Surveyor
- County Surveyor
- Professional Engineer
- Chief Surveyor, City of St. Paul

Office of The County Recorder, County of Ramsey

I hereby certify that this document was filed in the county
Recorders office at _____ M. on the _____ day of _____

County Recorder _____

By _____, Deputy

DOCUMENT NUMBER _____

0128-1080-82

8/21/04

Bm	8.28	151.92		143.64	HYD NUC Marshall's Dts
			5.30	146.62	TOP CIM 128
			5.26	146.46	Asphalt GR @ 128