

CERTIFICATE OF LOCATION OF GOVERNMENT CORNER

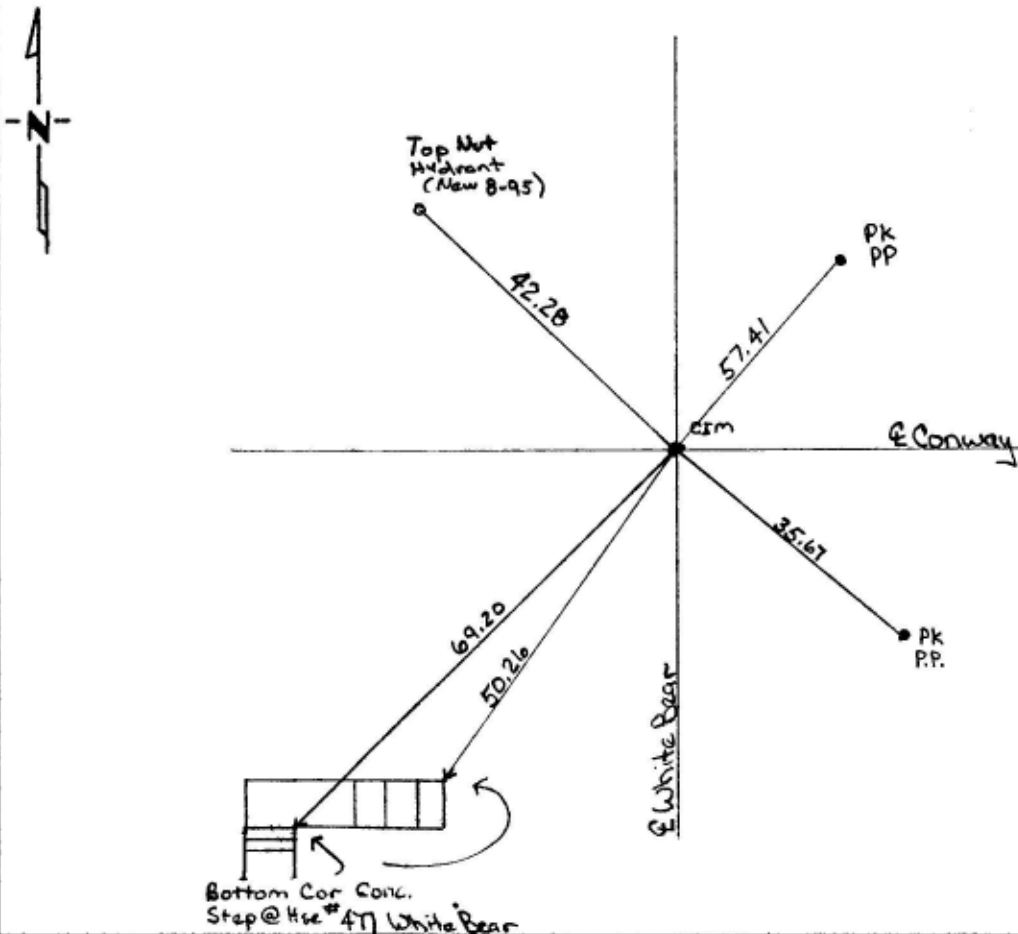
East 1/4 Corner of Section 34³⁴/₃₅, Township 29N, Range 22W, 4th P.M.

STATE OF MINNESOTA, County of Ramsey

At the corner location shown on the sketch:

- On 5-3-95 found a Granite Monument - removed for Street
DATE RECONSTRUCTION
- left monument as found, lowered monument, removed monument (explain)
- On 8-24-95 placed a CIM Set to grade AW, ME, RS
DATE

SKETCH OF REFERENCE TIES



RW, ME, RS

Statement of evidence relative to this corner location is on back of page.

I hereby certify that this document and the data contained herein was prepared by me or under my direct supervision

William J. [Signature]
SIGNATURE DATE 5/12/99

- Registration No. _____
- Land Surveyor, Professional Engineer
 - County Surveyor, County Engineer

OFFICE OF THE COUNTY RECORDER
County of _____

I hereby certify that this document was filed in the Co. Recorders office at _____ .M. on the _____ day of _____ A.D., 19 _____

County Recorder _____

By _____, Deputy

DOCUMENT NO. _____