

CERTIFICATE OF LOCATION OF GOVERNMENT CORNER

CITY MON. NO. 122

OLD INDEX NO. 95

EAST 1/4 Corner of Section 34 Township 29 Range 22, 4th P.M.

STATE OF MINNESOTA, County of Ramsey

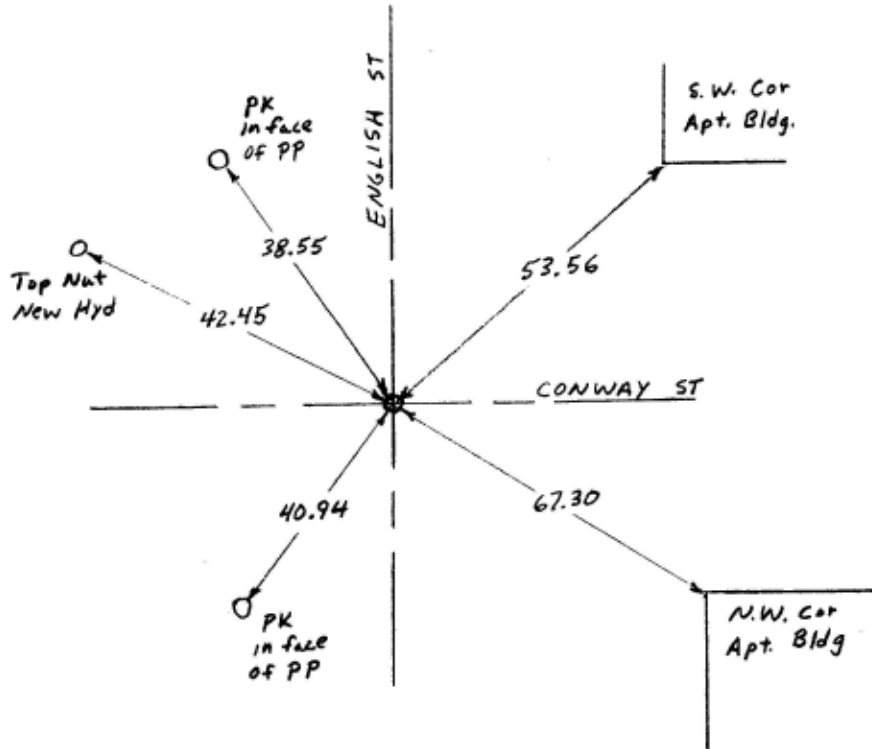
At the corner location shown on the sketch:

On April 6, 2004 found a Cast Iron Monument and re-tied
date

- left monument as found
- lowered monument
- removed monument (explain)

On _____ placed a _____
date

SKETCH OF REFERENCE TIES



BS DN KB

Statement of evidence relative to this corner is available from the St. Paul Public Works Dept., Survey Division

I hereby certify that this document and the data contained herein was prepared by me or under my direct supervision.

Michael P Murphy 4/23/04
SIGNATURE DATE

Registration No. 41,001

- Land Surveyor
- County Surveyor
- Professional Engineer
- Chief Surveyor, City of St. Paul

Office of The County Recorder, County of Ramsey

I hereby certify that this document was filed in the county
Recorders office at _____ M. on the _____ day of _____

County Recorder _____

By _____, Deputy

DOCUMENT NUMBER _____