

# CERTIFICATE OF LOCATION OF GOVERNMENT CORNER

CITY MON. NO. 118

OLD INDEX NO. 87

E 1/4 Corner of Section 31 Township 29 Range 22, 4 P.M.

STATE OF MINNESOTA, County of Ramsey

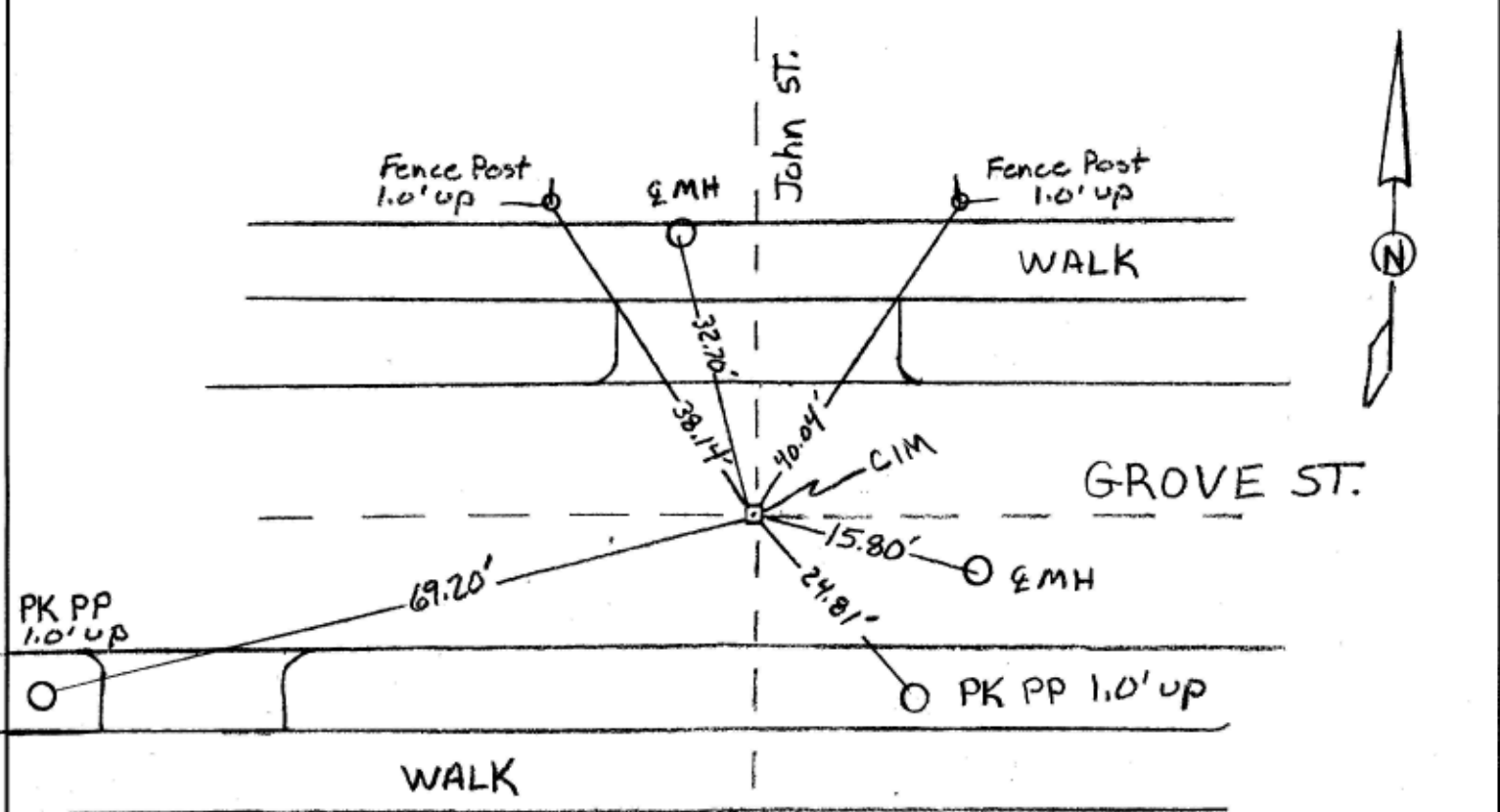
At the corner location shown on the sketch:

On 12-28-01 found a CIM, New Ties

left monument as found       lowered monument       removed monument (explain)

On \_\_\_\_\_ placed a \_\_\_\_\_

SKETCH OF REFERENCE TIES



Parking Lot

BS, DN

Statement of evidence relative to this corner is available from the St. Paul Public Works Dept., Survey Division

I hereby certify that this document and the data contained herein was prepared by me or under my direct supervision.

Jeffrey J. Jones 01/04/02  
SIGNATURE DATE

Registration No. 13144

- Land Surveyor       County Surveyor
- Professional Engineer
- Chief Surveyor, City of St. Paul

Office of The County Recorder, County of Ramsey

I hereby certify that this document was filed in the county Recorders office at \_\_\_\_\_ M. on the \_\_\_\_\_ day of \_\_\_\_\_

County Recorder \_\_\_\_\_

By \_\_\_\_\_, Deputy

DOCUMENT NUMBER \_\_\_\_\_