

CERTIFICATE OF LOCATION OF GOVERNMENT CORNER

CITY MON. NO. 116

OLD INDEX NO. 1159

EAST QUARTER Corner of Section 36 Township 29 Range 23, 4 P.M.

STATE OF MINNESOTA, County of Ramsey

At the corner location shown on the sketch:

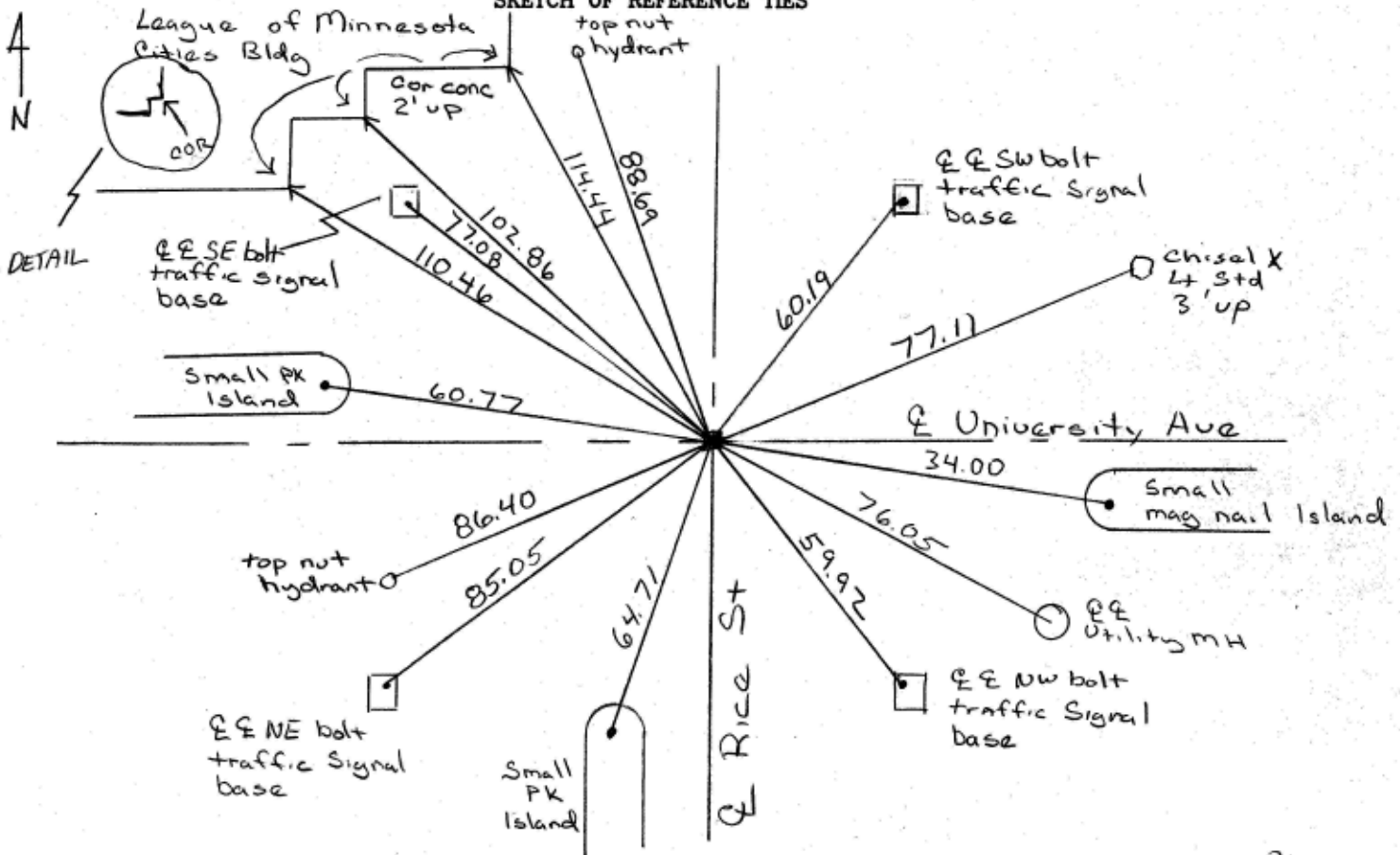
On Nov. 13, 2004 found a Granite Monument 0.44 below

Asphalt surface

- left monument as found
- lowered monument
- removed monument (explain)

On Nov 13, 2004 placed a 1ft dia. casting over granite monument

SKETCH OF REFERENCE TIES



Statement of evidence relative to this corner is available from the St. Paul Public Works Dept., Survey Division RWMS

I hereby certify that this document and the data contained herein was prepared by me or under my direct supervision.

Michael P Murphy 11/29/04
SIGNATURE DATE

Registration No. 41,001

- Land Surveyor
- County Surveyor
- Professional Engineer
- Chief Surveyor, City of St. Paul

Office of The County Recorder, County of Ramsey

I hereby certify that this document was filed in the county
Recorders office at _____ M. on the _____ day of _____

County Recorder _____

By _____, Deputy

DOCUMENT NUMBER _____

0116-1159-82

Nov 20, 2004

Bm	0.20	178.68		178.48	HYD NWC Univ & Rice
			3.52	175.16	Top casting
			3.96	174.72	Top Granite Monument
Bm			1.85	176.83	HYD SWC Univ & Rice
					(176.79)