

# CERTIFICATE OF LOCATION OF GOVERNMENT CORNER

CITY MON. NO. 112

OLD INDEX NO. 75

COMMON TO

QUARTER Corner ~~of~~ Sections 34 & 35 Township 29 Range 23, 4<sup>TH</sup> P.M.

STATE OF MINNESOTA, County of Ramsey

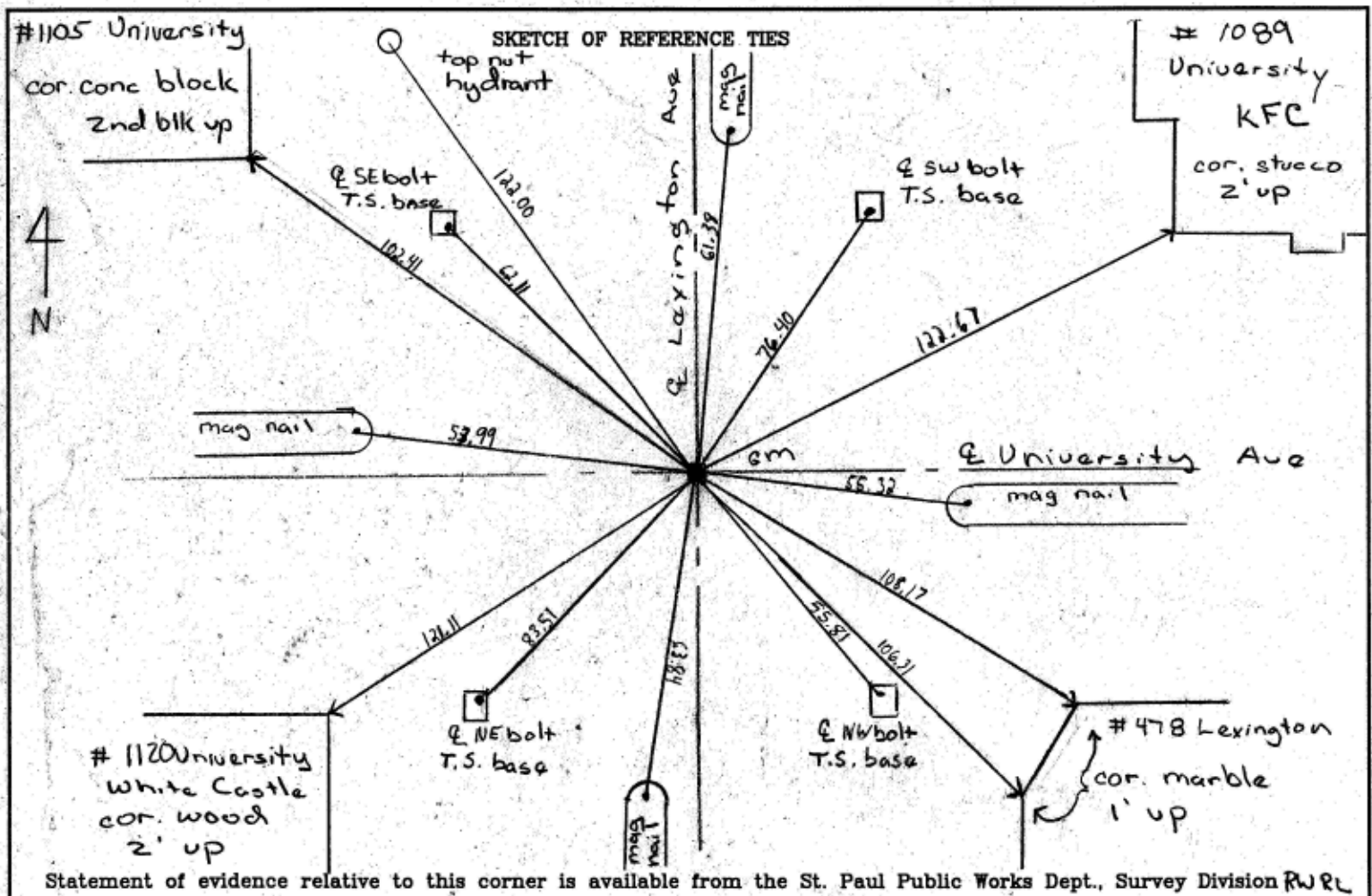
At the corner location shown on the sketch:

On April 8, 2006 found a GM 0.4 below asphalt surface

GM had 1/2" bent over rebar. removed bent rebar

left monument as found       lowered monument       removed monument (explain)

On April 8, 2006 placed a casting & cover over GM



Statement of evidence relative to this corner is available from the St. Paul Public Works Dept., Survey Division RWR

I hereby certify that this document and the data contained herein was prepared by me or under my direct supervision.

Michael P. Murphy      4/11/2006  
SIGNATURE      DATE

Registration No. 41,081

- Land Surveyor       County Surveyor
- Professional Engineer
- Chief Surveyor, City of St. Paul

Office of The County Recorder, County of Ramsey

I hereby certify that this document was filed in the county Recorders office at \_\_\_\_\_ M. on the \_\_\_\_\_ day of \_\_\_\_\_

County Recorder \_\_\_\_\_

By \_\_\_\_\_, Deputy

DOCUMENT NUMBER \_\_\_\_\_