

CERTIFICATE OF LOCATION OF GOVERNMENT CORNER

CITY MON. NO. 110

OLD INDEX NO. 970

QUARTER ^{Common to} Corner of Sections 33 & 34 Township 29 Range 23, 4TH P.M.

STATE OF MINNESOTA, County of Ramsey

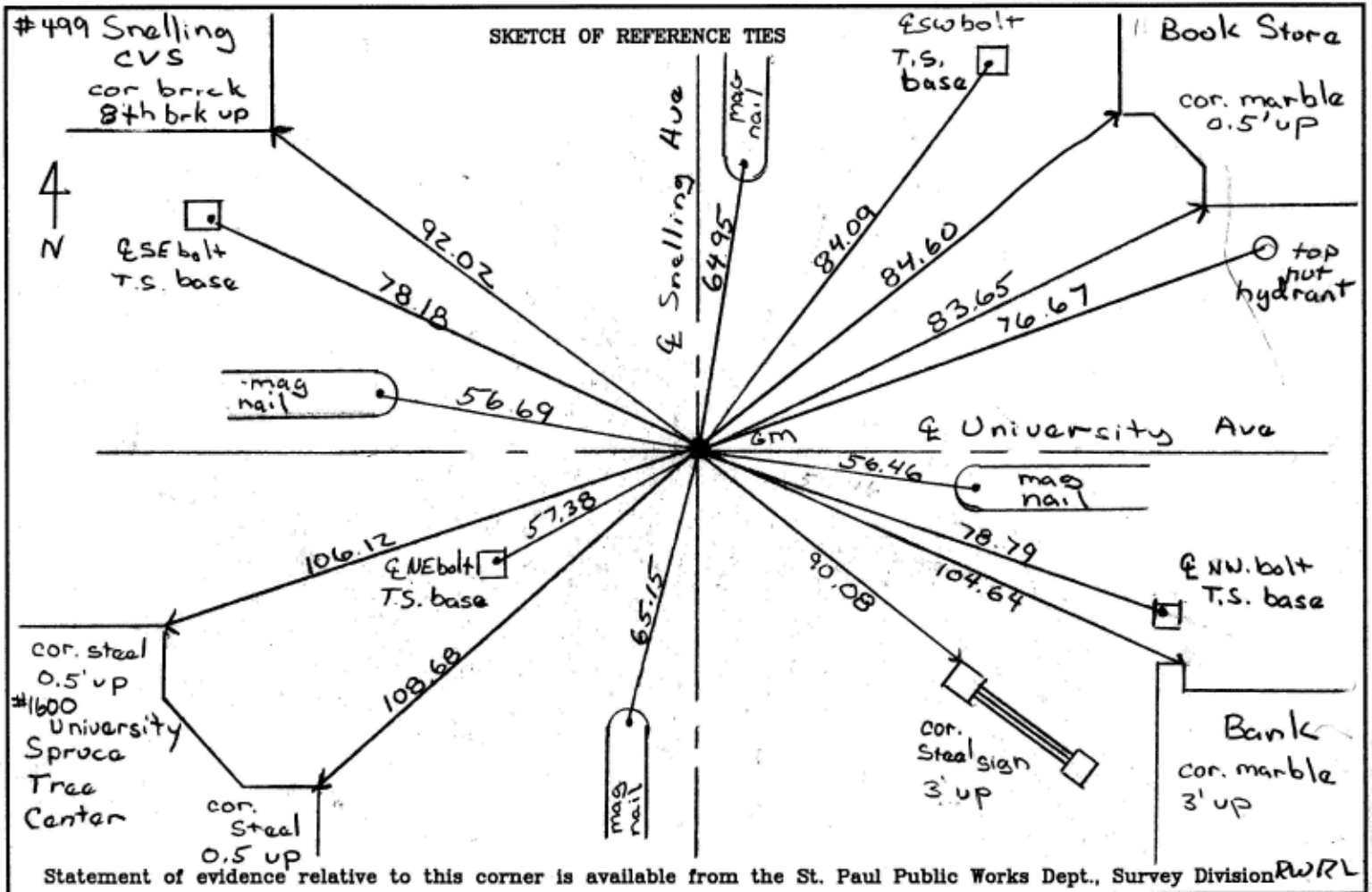
At the corner location shown on the sketch:

On April 1, 2006 found a G.M. 0.40' below asphalt surface

G.M. had Iron pipe in center of monument

left monument as found lowered monument removed monument (explain)

On April 1, 2006 placed a casting & cover over monument



I hereby certify that this document and the data contained herein was prepared by me or under my direct supervision.

Michael P. Murphy 4/11/2006
SIGNATURE DATE

Registration No. 41,001
 Land Surveyor County Surveyor
 Professional Engineer
 Chief Surveyor, City of St. Paul

Office of The County Recorder, County of Ramsey

I hereby certify that this document was filed in the county
Recorders office at _____ M. on the _____ day of _____

County Recorder _____

By _____, Deputy

DOCUMENT NUMBER _____