

# CERTIFICATE OF LOCATION OF GOVERNMENT CORNER

CITY MON. NO. 109

OLD INDEX NO. 971

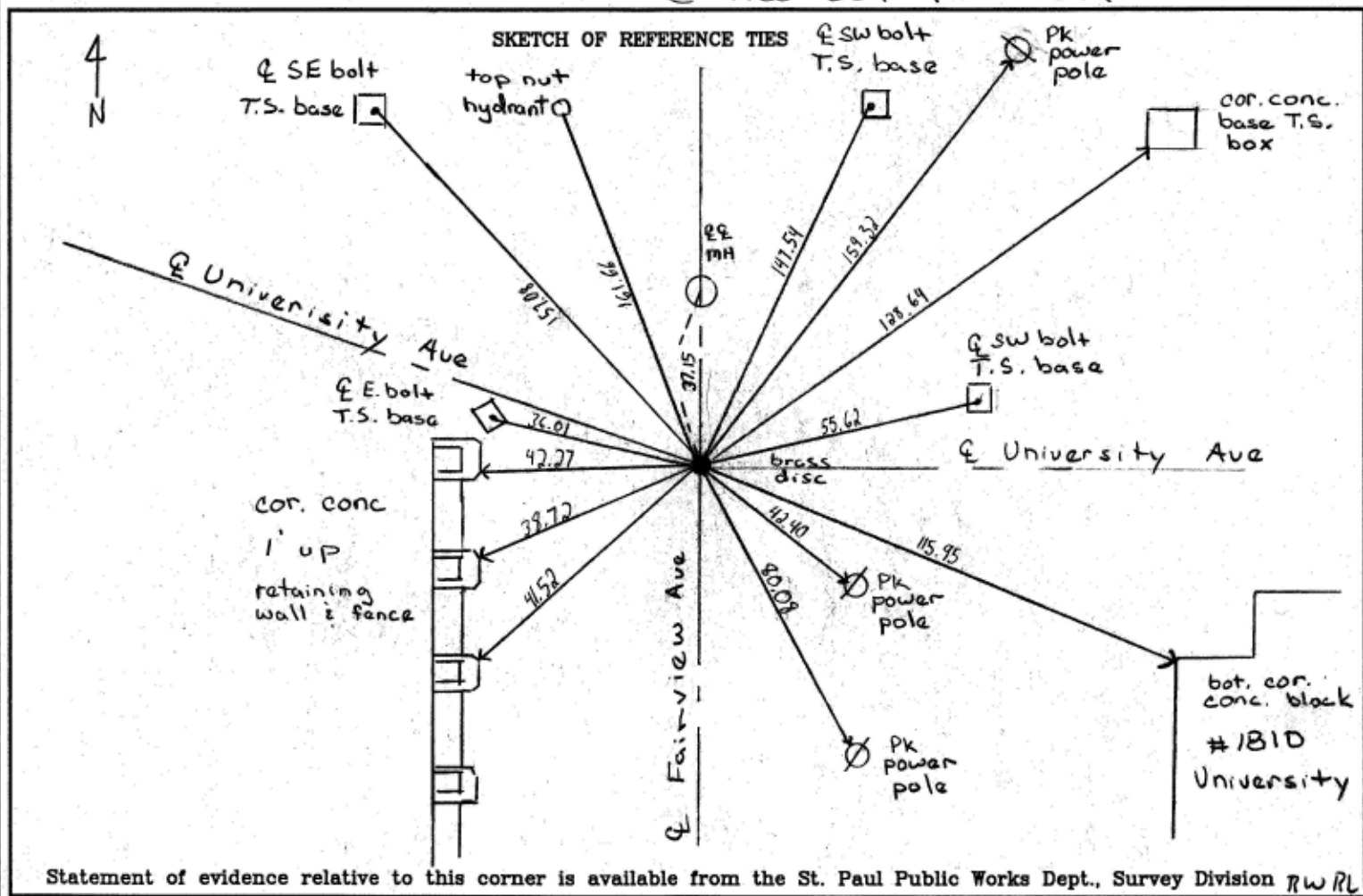
CENTER Corner of Section 33 Township 29 Range 23, 4<sup>TH</sup> P.M.

STATE OF MINNESOTA, County of Ramsey  
At the corner location shown on the sketch:

On \_\_\_\_\_ found a \_\_\_\_\_  
date

- left monument as found
- lowered monument
- removed monument (explain)

On April 3, 2006 placed a Brass Disc on 8" rebar 0.02 below conc grade  
date @ tied out position



Statement of evidence relative to this corner is available from the St. Paul Public Works Dept., Survey Division RW/RL

I hereby certify that this document and the data contained herein was prepared by me or under my direct supervision.

Michael P. Murphy 4/11/2006  
SIGNATURE DATE

- Registration No. 41,001
- Land Surveyor
  - County Surveyor
  - Professional Engineer
  - Chief Surveyor, City of St. Paul

Office of The County Recorder, County of Ramsey

I hereby certify that this document was filed in the county  
Recorders office at \_\_\_\_\_ M. on the \_\_\_\_\_ day of \_\_\_\_\_

County Recorder \_\_\_\_\_  
By \_\_\_\_\_, Deputy

DOCUMENT NUMBER \_\_\_\_\_