

CERTIFICATE OF LOCATION OF GOVERNMENT CORNER

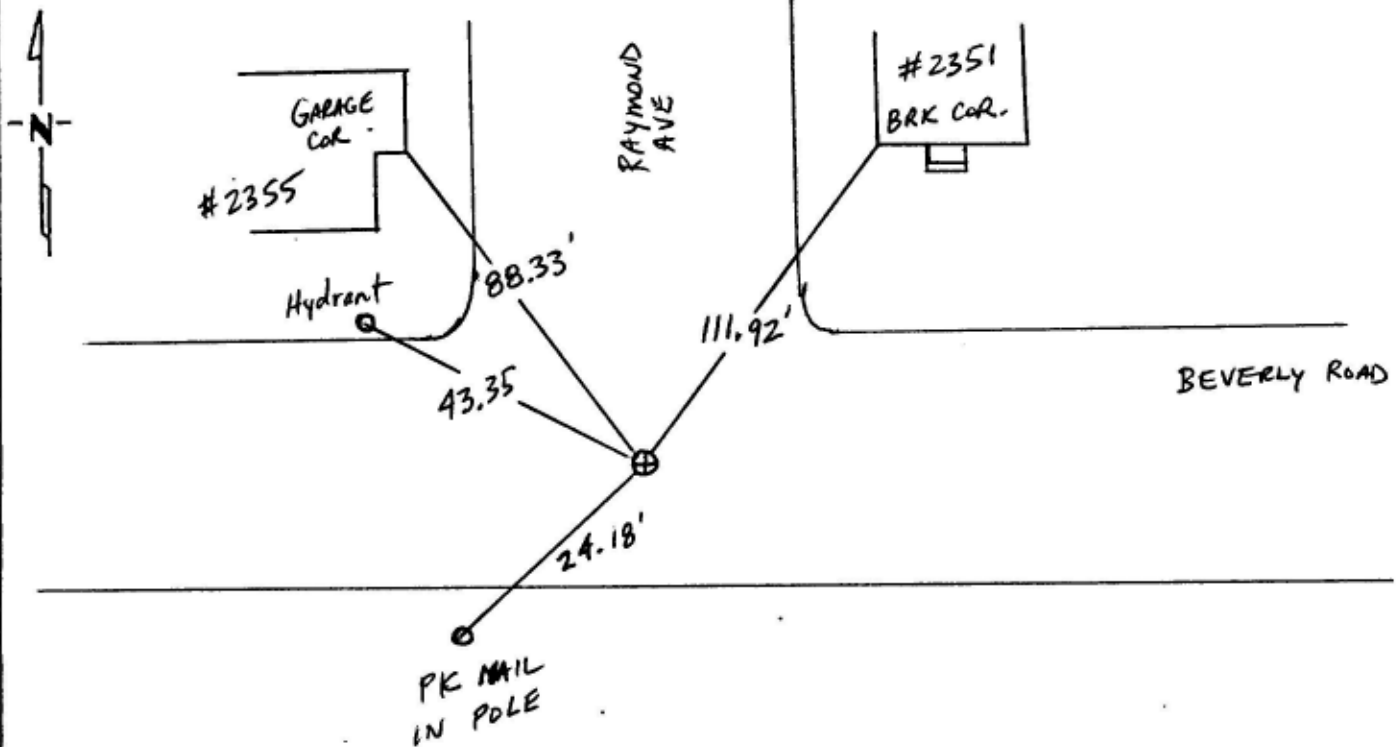
1/4 Corner of Section 32, Township 29, Range 23, 4th P.M.

STATE OF MINNESOTA, County of RAMSEY

At the corner location shown on the sketch:

- On June 26, 1995 found a Iron Monument in concrete, removed
DATE for street and sewer construction
 - left monument as found, lowered monument, removed monument (explain)
- On SEPT. 26, 1995 placed a Iron Monument set in concrete at
DATE grade

SKETCH OF REFERENCE TIES



Statement of evidence relative to this corner location is on back of page. FIELD MEASURED

I hereby certify that this document and the data contained herein was prepared by me or under my direct supervision.

Gene W. Johnson 4/5/96
SIGNATURE DATE

Registration No. 23905

- Land Surveyor, Professional Engineer
- County Surveyor, County Engineer

OFFICE OF THE COUNTY RECORDER

County of _____

I hereby certify that this document was filed in the Co. Recorders office at _____ .M. on the _____ day of _____ A.D., 19 _____

County Recorder _____

By _____, Deputy

DOCUMENT NO. _____