

CERTIFICATE OF LOCATION OF GOVERNMENT CORNER

MON. NO. 106
OLD INDEX No 1087

West 1/4 Corner of Section 32 Township 29 Range 23, 4th. P.M.

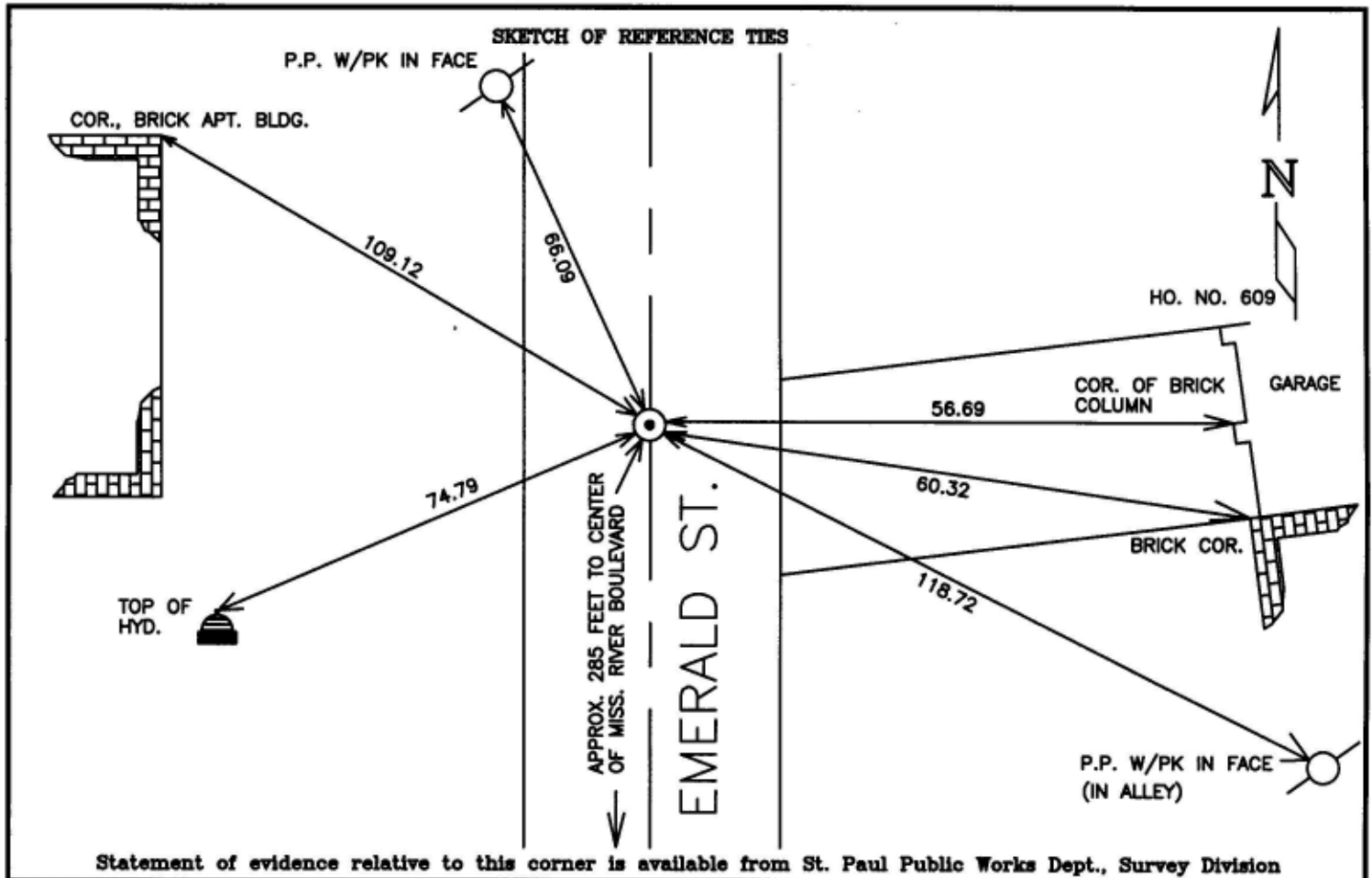
STATE OF MINNESOTA, County of Ramsey

At the corner location shown on the sketch:

On March 20, 1996 found a Cast iron monument (placed by Gorman Surveying, Inc. who will furnish a cert. of loc. as per conv. with B. Cutting)

- left monument as found
- lowered monument
- removed monument (explain)

On _____ placed a _____



Statement of evidence relative to this corner is available from St. Paul Public Works Dept., Survey Division

I hereby certify that this document and the data contained herein was prepared by me or under my direct supervision.

Richard C. Person March 21, 1996
SIGNATURE DATE

- Registration No. 23300
- Land Surveyor
 - County Surveyor
 - Professional Engineer
 - Chief Surveyor, City of St. Paul

Office of The County Recorder, County of Ramsey

I hereby certify that this document was filed in the county

Recorders office at _____ m. on the _____ day of _____

County Recorder _____

By _____, Deputy

DOCUMENT NUMBER _____