

CERTIFICATE OF LOCATION OF GOVERNMENT CORNER

CITY MON. NO. 105

OLD INDEX NO. 1883

N.E. Corner of Section 35 Township 29 Range 22, P.M.

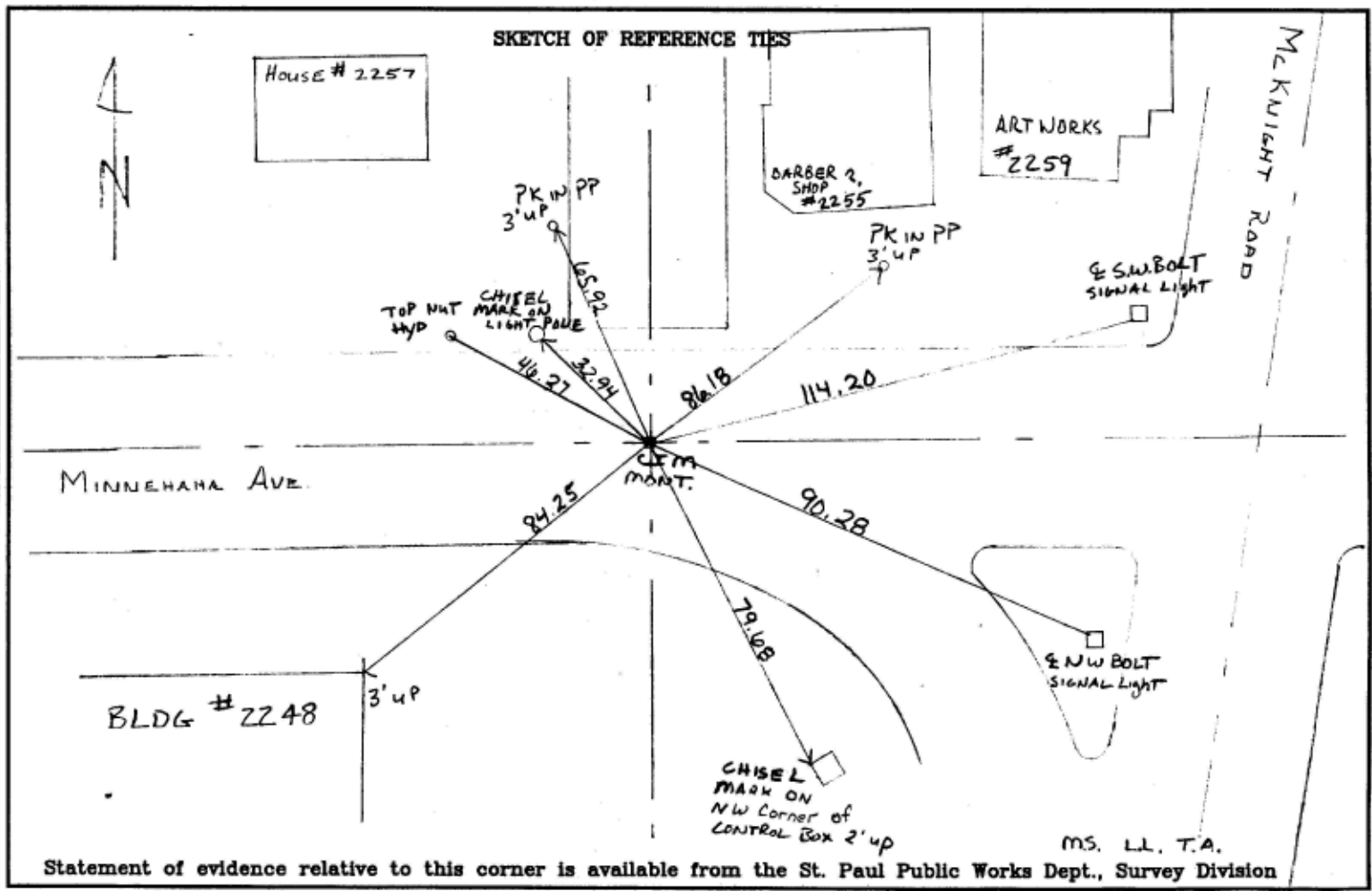
STATE OF MINNESOTA, County of Ramsey

At the corner location shown on the sketch:

On MARCH 13, 2001 found a CIM AT GRADE
date

left monument as found lowered monument removed monument (explain)

On placed a
date



I hereby certify that this document and the data contained herein was prepared by me or under my direct supervision.

Jeffrey L. Jones 3/14/01
SIGNATURE DATE

Registration No. 13144

Land Surveyor County Surveyor

Professional Engineer

Chief Surveyor, City of St. Paul

Office of The County Recorder, County of Ramsey

I hereby certify that this document was filed in the county Recorders office at M. on the day of

County Recorder

By , Deputy

DOCUMENT NUMBER