

OFFICE

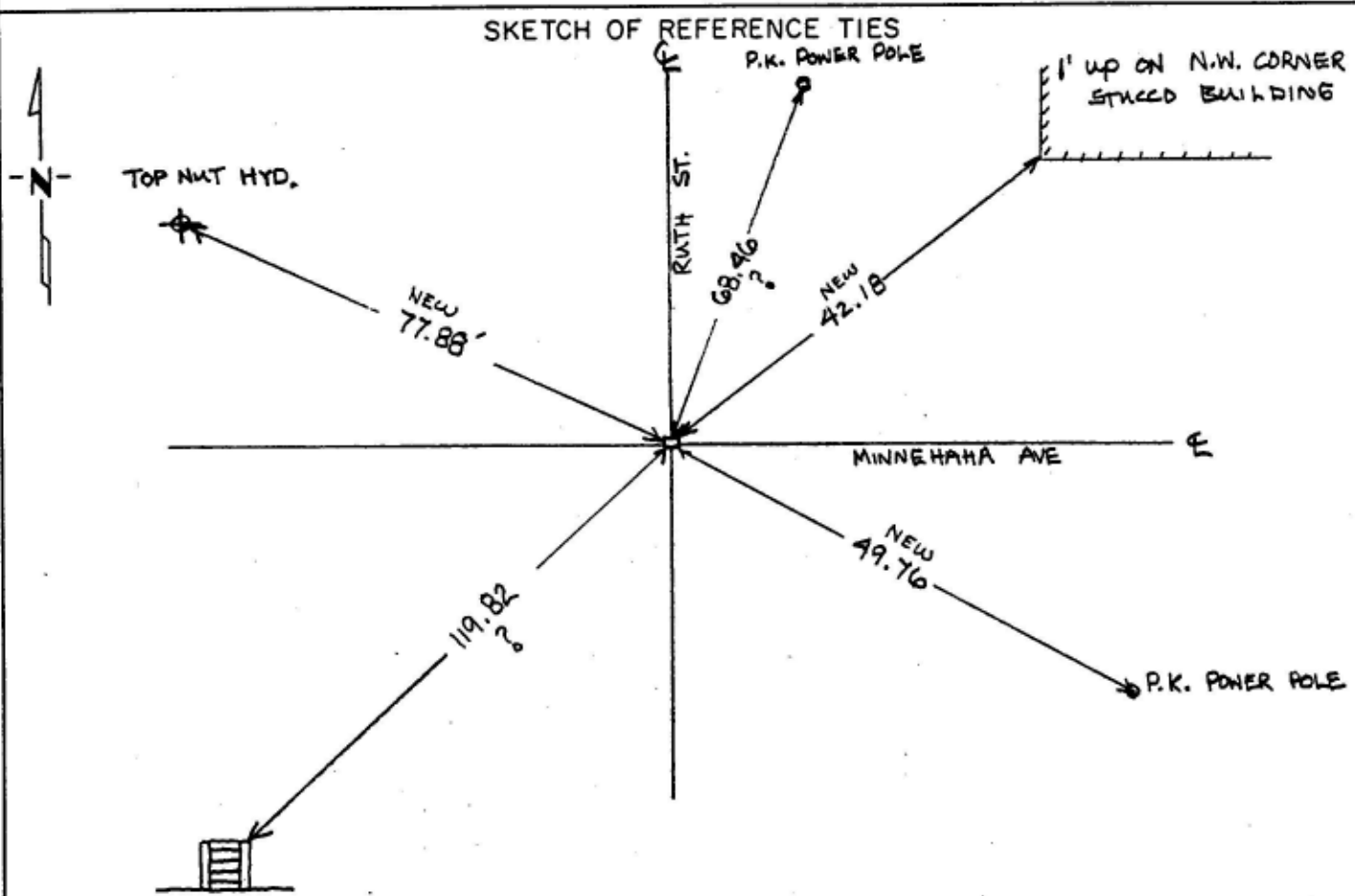
CERTIFICATE OF LOCATION OF GOVERNMENT CORNER

1/4 Corner of Section 26, Township 29, Range 22, _____ P.M.

STATE OF MINNESOTA, County of RAMSEY

At the corner location shown on the sketch:

- On JULY 29, 1994 found a CAST IRON MONT. 0.1' BELOW GRADE
DATE
- left monument as found, lowered monument, removed monument (explain)
- On _____ placed a _____
DATE



SKETCH BY: M. WASSMAN OCT. 3, 1994

FIELD TIES BY: M.E., D.N., R.S. & BDM 7/29/94

Statement of evidence relative to this corner location is on back of page.

I hereby certify that this document and the data contained herein was prepared by me or under my direct supervision.

SIGNATURE DATE

Registration No. _____

- Land Surveyor, Professional Engineer
- County Surveyor, County Engineer

OFFICE OF THE COUNTY RECORDER

County of _____

I hereby certify that this document was filed in the Co. Recorders office at _____ .M. on the _____ day of _____ A.D., 19 _____

County Recorder _____

By _____, Deputy

DOCUMENT NO. _____