

0102-0652

# CERTIFICATE OF LOCATION OF GOVERNMENT CORNER

CITY MON. NO. 102

OLD INDEX NO. 0652

1/4 Corner of Section 34 Township 29 Range 22, \_\_\_ P.M.

STATE OF MINNESOTA, County of Ramsey

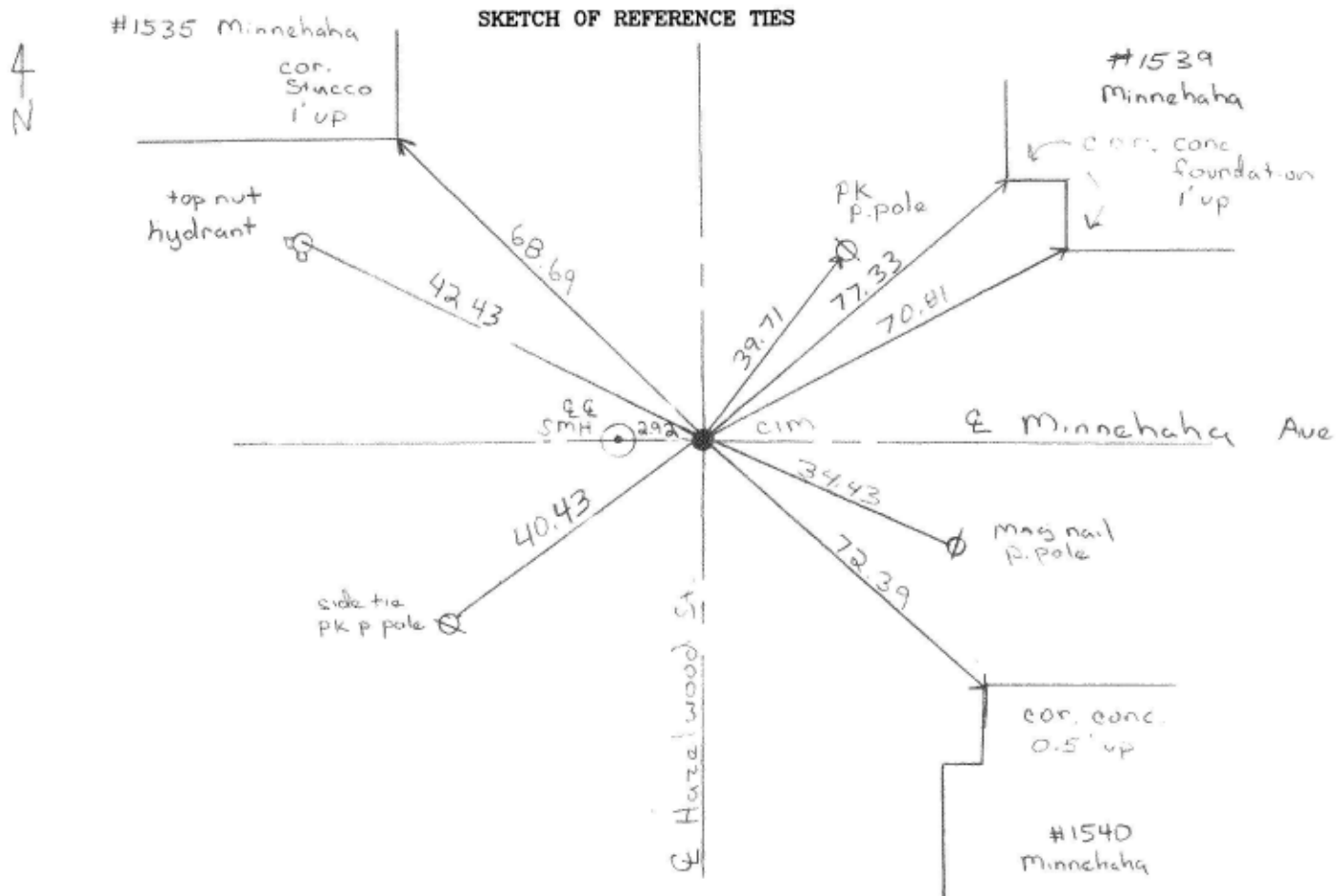
At the corner location shown on the sketch:

On April 26, 2007 found a 4-1' straddles - monument missing  
date  
due to utility construction trench previously dug

- left monument as found
- lowered monument
- removed monument (explain)

On May 3, 2007 placed a CIM in concrete base  
date

SKETCH OF REFERENCE TIES



Statement of evidence relative to this corner is available from the St. Paul Public Works Dept., Survey Division RW, RL, LO.

I hereby certify that this document and the data contained herein was prepared by me or under my direct supervision.

*[Signature]*  
SIGNATURE

JUNE 14, 2007  
DATE

Registration No. 44880

- Land Surveyor
- County Surveyor
- Professional Engineer
- Chief Surveyor, City of St. Paul

Office of The County Recorder, County of Ramsey

I hereby certify that this document was filed in the county

Recorders office at \_\_\_\_\_ M. on the \_\_\_\_\_ day of \_\_\_\_\_

County Recorder \_\_\_\_\_

By \_\_\_\_\_, Deputy

DOCUMENT NUMBER \_\_\_\_\_