

CERTIFICATE OF LOCATION OF GOVERNMENT CORNER

CITY MON. NO. 100

OLD INDEX NO. 71

South 1/4 Corner of Section 28 Township 29 Range 22, 4th P.M.

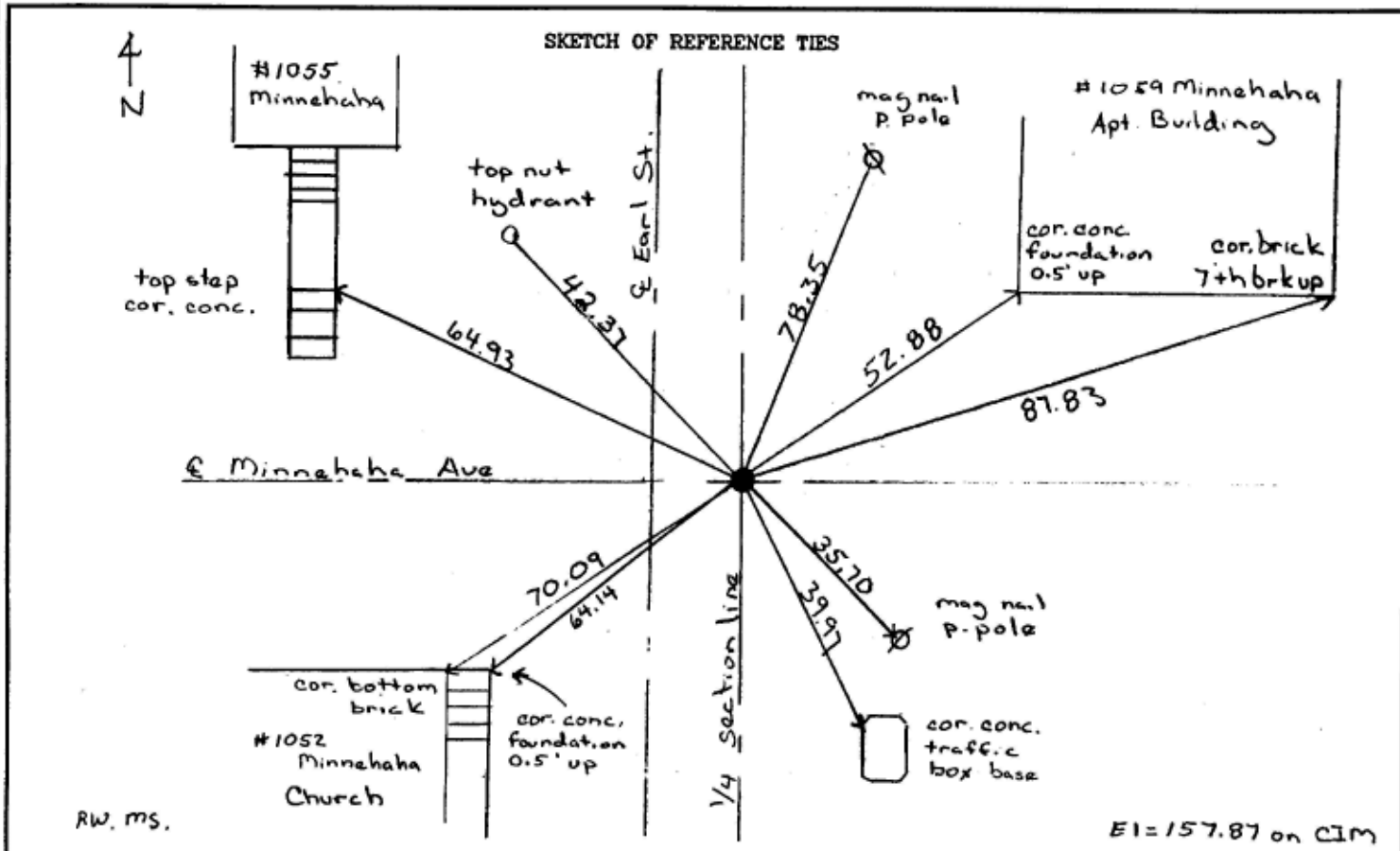
STATE OF MINNESOTA, County of Ramsey

At the corner location shown on the sketch:

On November 2, 2002 found a broken CIM 0.2 ft. below grade with 1 foot straddles
date

- left monument as found
- lowered monument
- removed monument (explain)

On November 2, 2002 placed a CIM in concrete 0.03 ft below asphalt grade
date



Statement of evidence relative to this corner is available from the St. Paul Public Works Dept., Survey Division

I hereby certify that this document and the data contained herein was prepared by me or under my direct supervision.

[Signature] 11/12/02
DATE

Registration No. 13144

- Land Surveyor
- County Surveyor
- Professional Engineer
- Chief Surveyor, City of St. Paul

Office of The County Recorder, County of Ramsey

I hereby certify that this document was filed in the county
Recorders office at _____ M. on the _____ day of _____

County Recorder _____

By _____, Deputy

DOCUMENT NUMBER _____