

CERTIFICATE OF LOCATION OF GOVERNMENT CORNER

CITY MON. NO. 94

OLD INDEX NO. 59

South
Quarter Corner of Section 25 Township 29 Range 23, 4 P.M.

STATE OF MINNESOTA, County of Ramsey

At the corner location shown on the sketch:

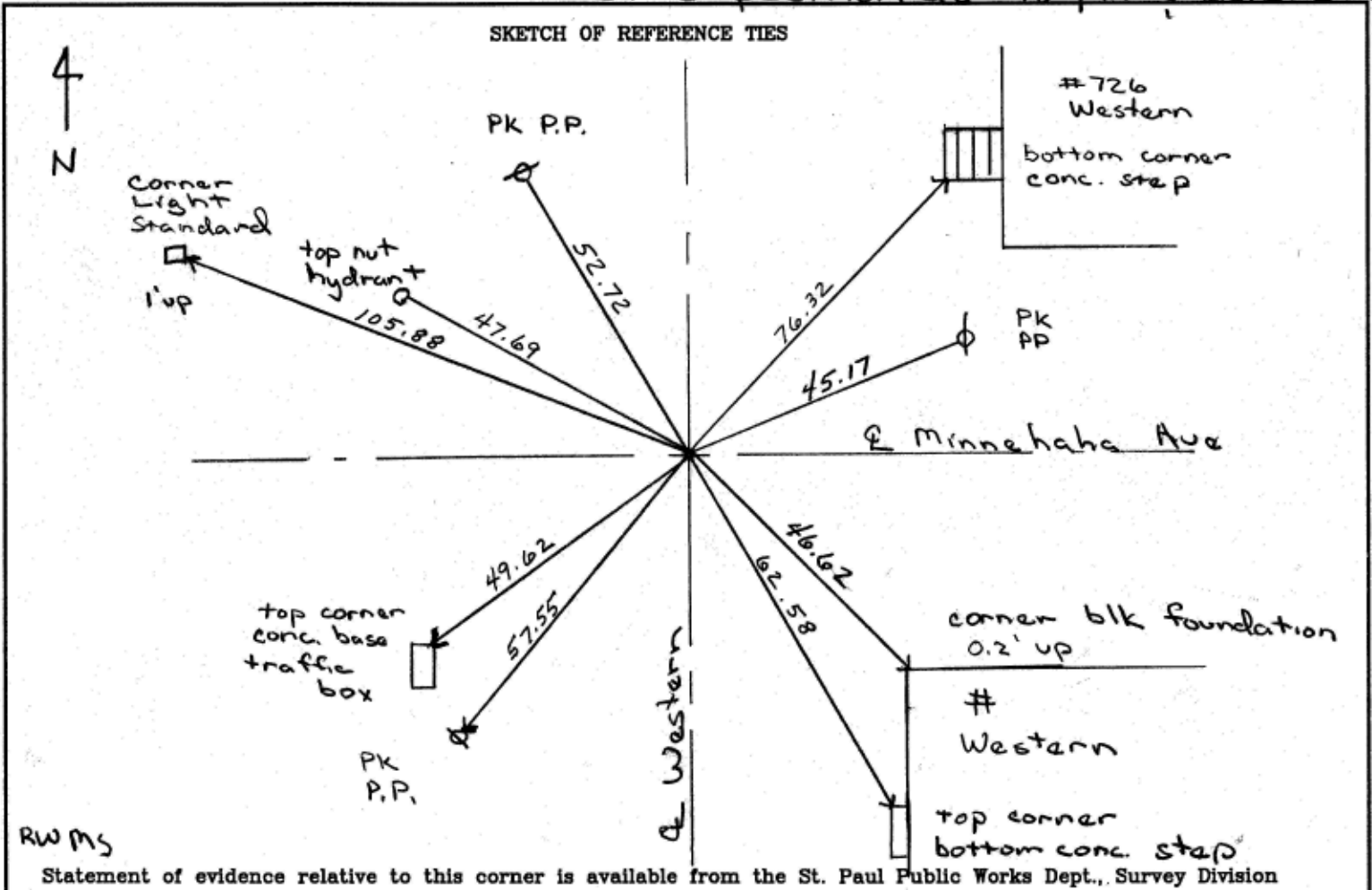
On Sept 18, 2004 found a 7/8" Iron pin over broken

off cim 1.5' below road surface, placed 2' straddles

- left monument as found
- lowered monument
- removed monument (explain)

On Sept 18, 2004 placed a cim stamped quarter corner, at
same position as 7/8" pin & broken cim

SKETCH OF REFERENCE TIES



RWMS

Statement of evidence relative to this corner is available from the St. Paul Public Works Dept., Survey Division

I hereby certify that this document and the data contained herein was prepared by me or under my direct supervision.

Michael P Murphy 9/22/04
SIGNATURE DATE

Registration No. 41,001

- Land Surveyor County Surveyor
- Professional Engineer
- Chief Surveyor, City of St. Paul

Office of The County Recorder, County of Ramsey

I hereby certify that this document was filed in the county
Recorders office at _____ M. on the _____ day of _____

County Recorder _____

By _____, Deputy

DOCUMENT NUMBER _____