

CERTIFICATE OF LOCATION OF GOVERNMENT CORNER

CITY MON. NO. 91

OLD INDEX NO. 53

NE Corner of Section 34 Township 29 Range 23, 4TH P.M.

STATE OF MINNESOTA, County of Ramsey

At the corner location shown on the sketch:

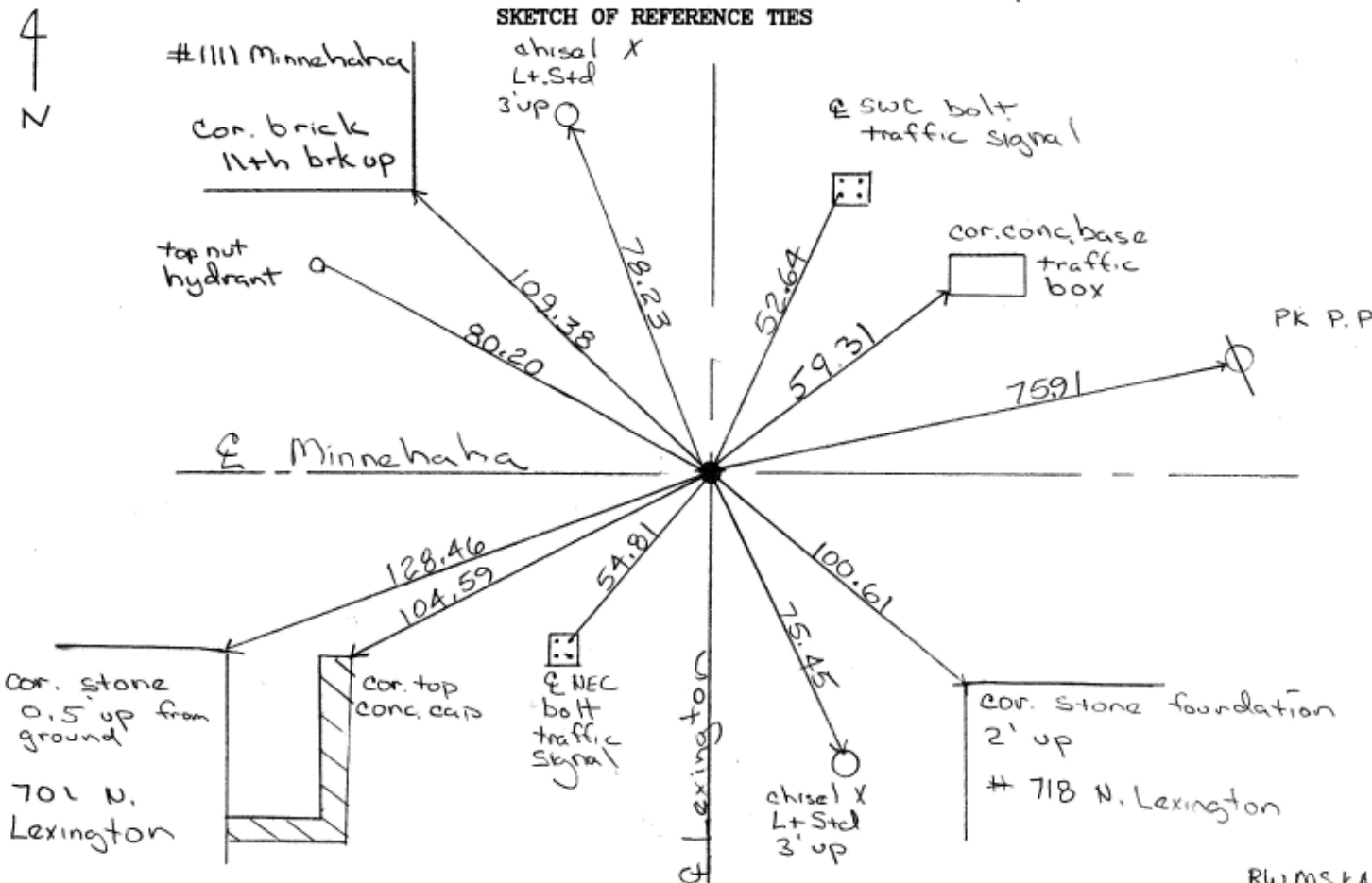
On 7-10-2004 found a broken cim 0.2 below grade -

placed 4 - 2ft straddles in surface

- left monument as found
- lowered monument
- removed monument (explain)

On 7-10-2004 placed a CIM stamped sect cor in concrete
0.05 below asphalt surface

SKETCH OF REFERENCE TIES



Statement of evidence relative to this corner is available from the St. Paul Public Works Dept., Survey Division RWMSKA

I hereby certify that this document and the data contained herein was prepared by me or under my direct supervision.

Michael P. Murphy 7/12/04
SIGNATURE DATE

- Registration No. 41,001
- Land Surveyor
 - County Surveyor
 - Professional Engineer
 - Chief Surveyor, City of St. Paul

Office of The County Recorder, County of Ramsey

I hereby certify that this document was filed in the county
Recorders office at _____ M. on the _____ day of

County Recorder _____

By _____, Deputy

DOCUMENT NUMBER _____