

CERTIFICATE OF LOCATION OF GOVERNMENT CORNER

CITY MON. NO. 90

OLD INDEX NO. 665

1/4 Corner of Section 34 Township 29 Range 23, 4TH P.M.

STATE OF MINNESOTA, County of Ramsey

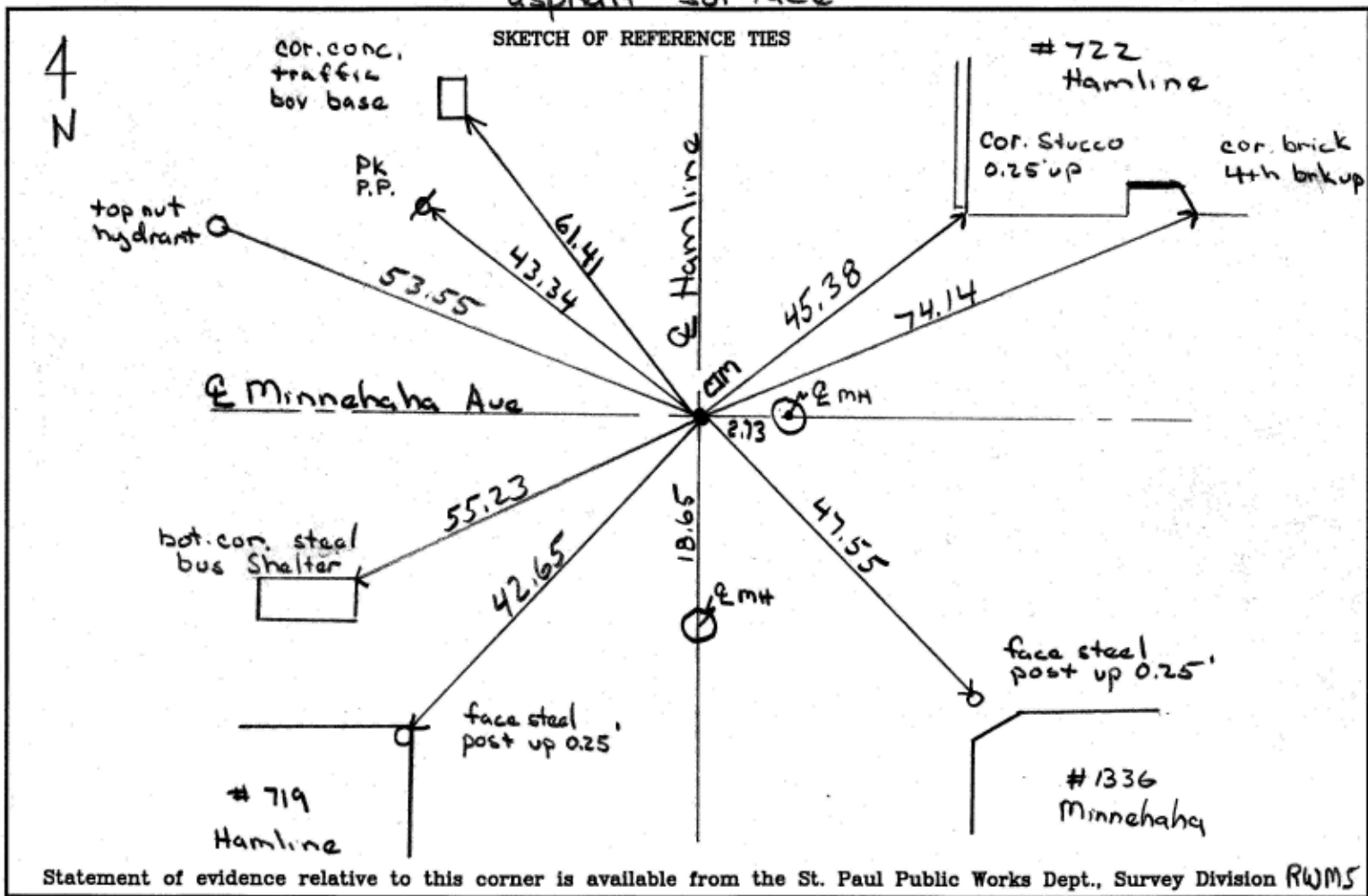
At the corner location shown on the sketch:

On Oct 2, 2004 found a 1/2" bolt/pin 0.10 below

asphalt surface, placed 3-2ft straddles

- left monument as found
- lowered monument
- removed monument (explain)

On Oct 2, 2004 placed a CIM stamped 1/4 corner 0.02 below
asphalt surface



Statement of evidence relative to this corner is available from the St. Paul Public Works Dept., Survey Division RWMS

I hereby certify that this document and the data contained herein was prepared by me or under my direct supervision.

Michael P. Murphy 10/5/04
SIGNATURE DATE

Registration No. 41001

- Land Surveyor
- County Surveyor
- Professional Engineer
- Chief Surveyor, City of St. Paul

Office of The County Recorder, County of Ramsey

I hereby certify that this document was filed in the county
Recorders office at _____ M. on the _____ day of

County Recorder _____

By _____, Deputy

DOCUMENT NUMBER _____