

CERTIFICATE OF LOCATION OF GOVERNMENT CORNER

South West Corner of Section 27, Township 29, Range 23, 4th P.M.

STATE OF MINNESOTA, County of Ramsey

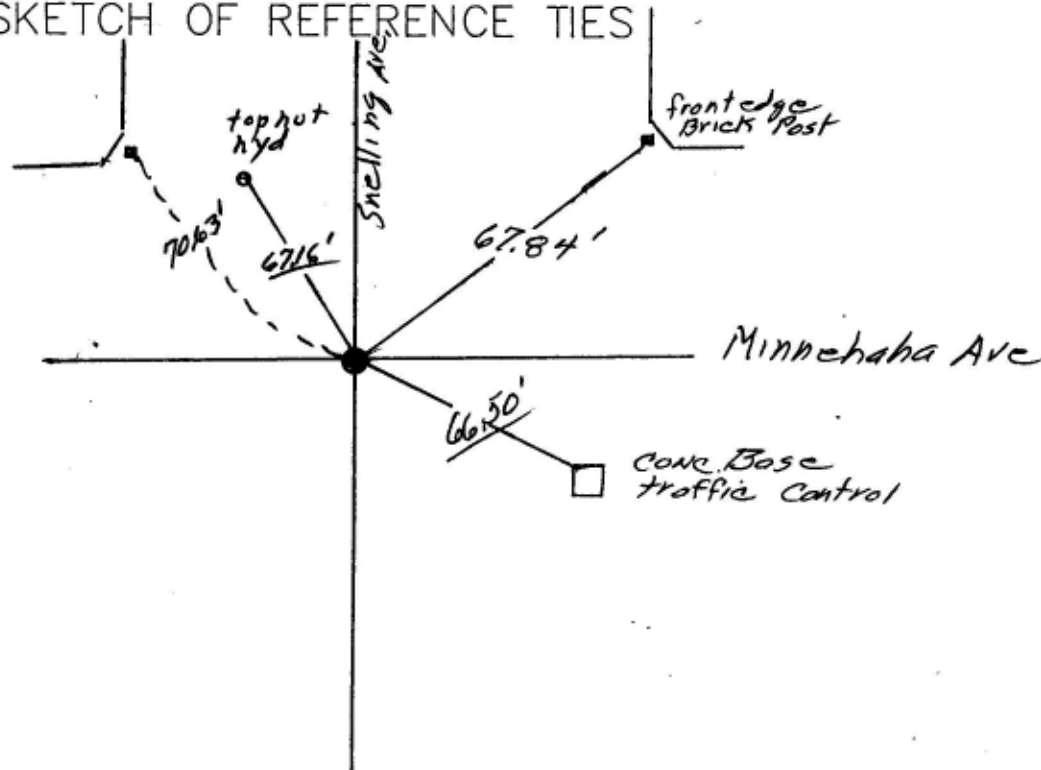
At the corner location shown on the sketch:

On Aug 1, 1991 found a 3/4" Iron with PK in Center at Present Street Grade

left mon. as found lowered mon. removed mon. (explain)

On _____ placed a _____

SKETCH OF REFERENCE TIES



Statement of evidence relative to this corner location is on back of page.

I hereby certify that this document and the date contained herein was prepared by me or under my supervision.

William J. [Signature]
Signature

8/05/1991
date

Registration No. 20576

Land Surveyor Professional Engineer

County Surveyor County Engineer

Office of the Register of Deeds
County of _____

I hereby certify that this document was filed in the Reg. of Deeds office at _____ M. on the _____ day of _____ A.D., 19____ Register of Deeds _____ By _____

DOCUMENT NO. _____

Scanned 5/12/99