

CERTIFICATE OF LOCATION OF GOVERNMENT CORNER

City ID: 0087

Old Index #: 1049

County ID #: 0535

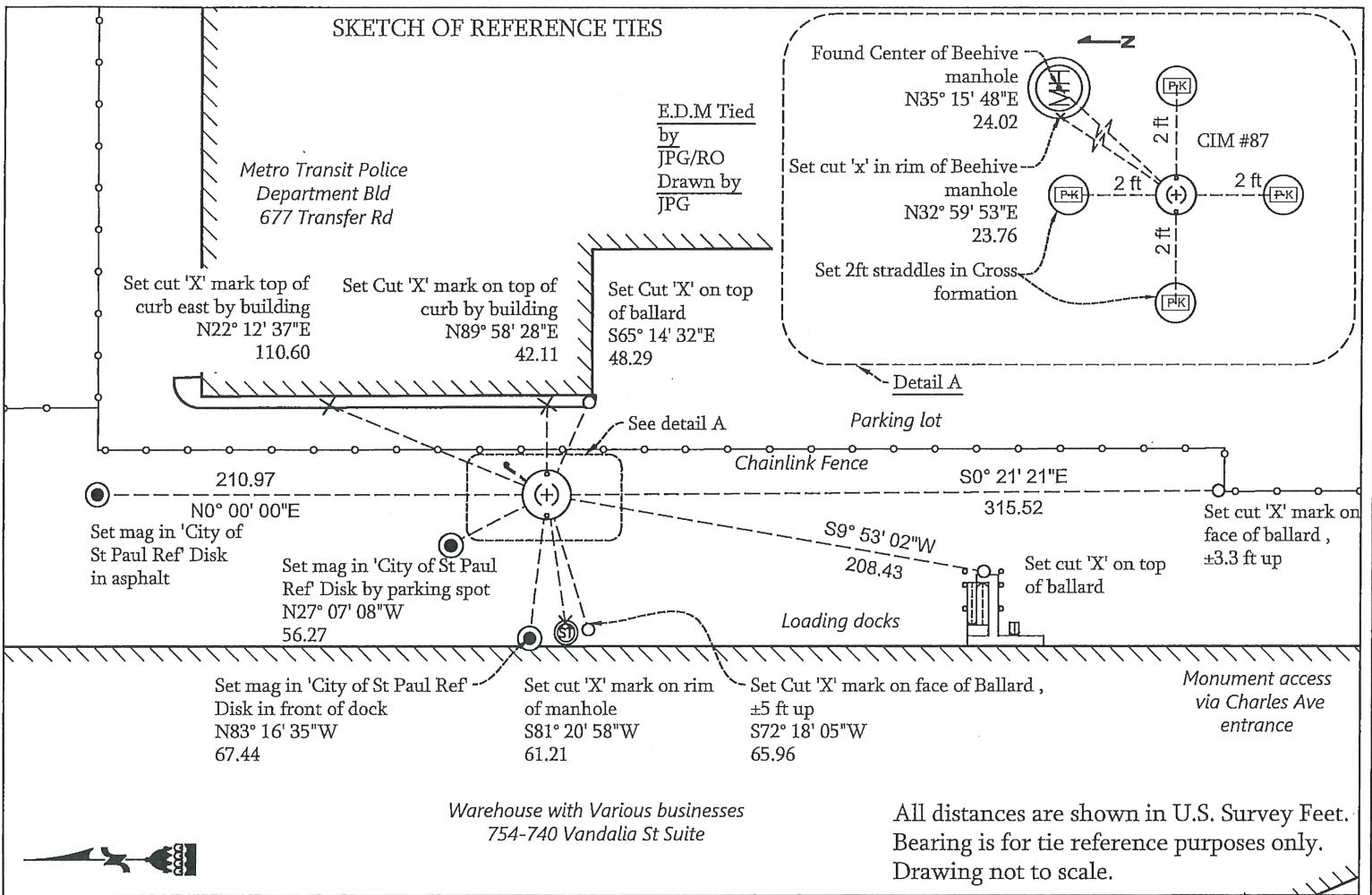
Northeast Section Corner of Section 32, Township 29 North,
Range 23 West, Fourth Principal Meridian, County of Ramsey, State of Minnesota,
At the corner location shown on the sketch:

On September 19, 2024 found CIM ±0.8 ft below the asphalt grade.

Photo taken and fast static observation recorded

left monument as found lowered monument removed monument (explain)

On _____ placed a _____



I hereby certify that this survey, plan, or report was prepared by me, or under my direct supervision, and that I am a duly Licensed Land Surveyor under the laws of the State of Minnesota.

Kevin Kaley 2/2/2026
 Kevin Kaley, LS Date
 City Surveyor, Saint Paul, Minnesota

Registration No. #53546

Office of the County Surveyor, Ramsey County, Minnesota

I hereby certify that this document was filed with the County Surveyor's Office at A .M. on the 27th day of March, 2026.

Daniel H. Baar
 Daniel Baar, LS
 County Surveyor, Ramsey County, Minnesota

STATEMENT OF EVIDENCE

PLS Description: Section Corner SW28/SE29/NE32/NW33-29-23 4th P.M.
St. Paul Monument #: 87
St. Paul Old Index #: 1049
Ramsey County #: 0535
Location: Minnehaha Ave (prod) & Cleveland Ave (prod)

- Nov 1847 Isaac N Higbee deputy surveyor set a wood post was set for the corner in the Public Land Survey. See IH p.102-103 2923.
- 1887 A survey made of the Cleveland Ave Section Line by J.H. Armstrong shows a hub established by Minn Transfer's Engineer at the SE cor of Sec 29 (FB 216 page 3)
Distances:
E ¼ cor Sec 29 to SE cor Sec 29 2623.62ft
N ¼ cor Sec 32 to NE cor Sec 32 2634.2ft
This F.B. on page 3 shows angles which are in conflict with the standard map angles JB Irvine's Book 3 of notes page 53 – 55 & Field Book 218 copy page 36. I believe that the correct angles should be:
No ¼ cor Sec 32 to E ¼ cor Sec 32 89° 53'
So ¼ cor Sec 29 to E ¼ cor Sec 29 90° 26'
W ¼ cor Sec 33 to No ¼ cor Sec 33 90° 00'
So ¼ cor Sec 28 to W ¼ cor Sec 28 89° 41'
JB Irvine's Book 3:
E ¼ cor Sec 29 to SE cor Sec 29 2623.62ft
- Sep 1887 Monument set by J H Armstrong. See old index book, entry 1049.
- Dec 1890 No ¼ cor Sec 33 to NW cor Sec 33 2633.29ft
JB Irvine's Book 15:
E ¼ cor Sec 32 to NE cor Sec 32 2636.59ft
Irvine's Book 15 also shows the same angles as Book 3 as measured at the SE corner Section 29.
- Feb 11, 1934 Placed ties on the monument. See book MSX 4 p.30.
- Mar 1971 found granite monument and placed ties. A survey (FB 1611 page 2) of the Cleveland Ave Section Line gives a chained distance of 2626.70 feet from the SE cor Sec 29 to the E ¼ cor Sec 29.
- Feb 16, 1972 Found GM 0.8 ft below crushed rock road. See Yellow Tie Book & See FB 1689A p.6.
- Jun 2, 1972 Found granite monument, set CIM over granite monument in concrete in new blacktop surface. See Yellow Tie Book & See FB 1689A p.17.

Feb 1974	Corner tied to a traverse run with T-16 and Hewlett Packard E.D.M.	
	SE cor Sec 29 – E ¼ cor Sec 29	2626.27ft
	SE cor Sec 29 – S ¼ cor Sec 29	2634.32ft
	(Could be wrong) NE cor Sec 32 – E ¼ cor Sec 32	2633.66ft
	NW cor Sec 33 – N ¼ cor Sec 33	2632.54ft
	Angles as measured at the SE cor Sec 29:	
	E ¼ cor Sec 29 – S ¼ cor Sec 29	90° 25' 52.1"
	N ¼ cor Sec 32 – E ¼ cor Sec 32	89° 54' 17.6"
	N ¼ cor Sec 33 – W ¼ cor Sec 33	90° 01' 44.3"
	W ¼ cor Sec 28 – S ¼ cor Sec 28	89° 38' 06"
1985	Historic, one time only GPS survey = S0636.	
Aug 13, 1985	Elevation of 203.5 ft. See FB 1421A p.72.	
Feb 1987	Monument top broken out, CIM still OK 0.4 ft below asphalt. See Yellow Tie Book.	
1987	Ties Checked	
Jan 1987	Traverse run with a SET3 Total Station (FB 1686 page 67 & 68):	
	E ¼ cor Sec 29 to E ¼ cor Sec 29	2626.18ft
Feb 1987	Monument top broken out, CIM still okay 0.4 ft below asphalt. See Yellow Tie Book.	
June 1990	FB 1708A page 33:	
	SE cor Section 29 to E ¼ cor Sec 29	2625.89ft
Aug 15, 1990	Iron pin set to grade in concrete over CIM 0.5 ft below asphalt. See Yellow Tie Book.	
Dec 1991	So ¼ cor Sec 29, SE cor Sec 29 held fixed in a Least Squares Adj:	
	Distance:	
	W ¼ cor Sec 28 to SW cor Sec 28	2625.97ft
	SW cor Sec 28 to S ¼ cor Sec 28	2633.03ft
	NW cor Sec 33 to W ¼ cor Sec 33	2637.03ft
	SE cor Sec 29 to So ¼ cor Sec 29	2634.33ft
	Angles as computed at the SE cor Sec 29:	
	E ¼ cor Sec 29 – So ¼ cor Sec 29	90° 26' 26.2"
	N ¼ cor Sec 32 – E ¼ cor Sec 32	89° 54' 09.1"
	W ¼ cor Sec 33 – N ¼ cor Sec 33	90° 00' 14.6"
	W ¼ cor Sec 28 – S ¼ cor Sec 28	89° 39' 10.1"
Sep 21, 1995	Found iron pin at grade opposite door #744 Belcher Enterprises (marked for target for 1995 aerial).	

- Mar 28, 1996 Found iron pin (marked for target).
- Mar 2000 Found CIM (marked for painting target for 2000 aerial).
- Feb 28, 2002 Elevation 203.47 ft on iron pin at asphalt surface. See FB 1736 p.2 .
- Jun 11, 2008 Photos taken.
- Dec 24, 2012 Dug 0.1 ft into asphalt driveway; Monument not seen, but metal detector indicated that there could be something 0.3-0.4 ft below grade.
- Sep 19 2024 Found CIM ± 0.8 ft below the asphalt grade. Set a new tie and placed four 2 ft PK nail straddles in a cross formation. Photo taken and fast static observation recorded