

# CERTIFICATE OF LOCATION OF GOVERNMENT CORNER

CITY MON. NO. 85

OLD INDEX NO. 1088

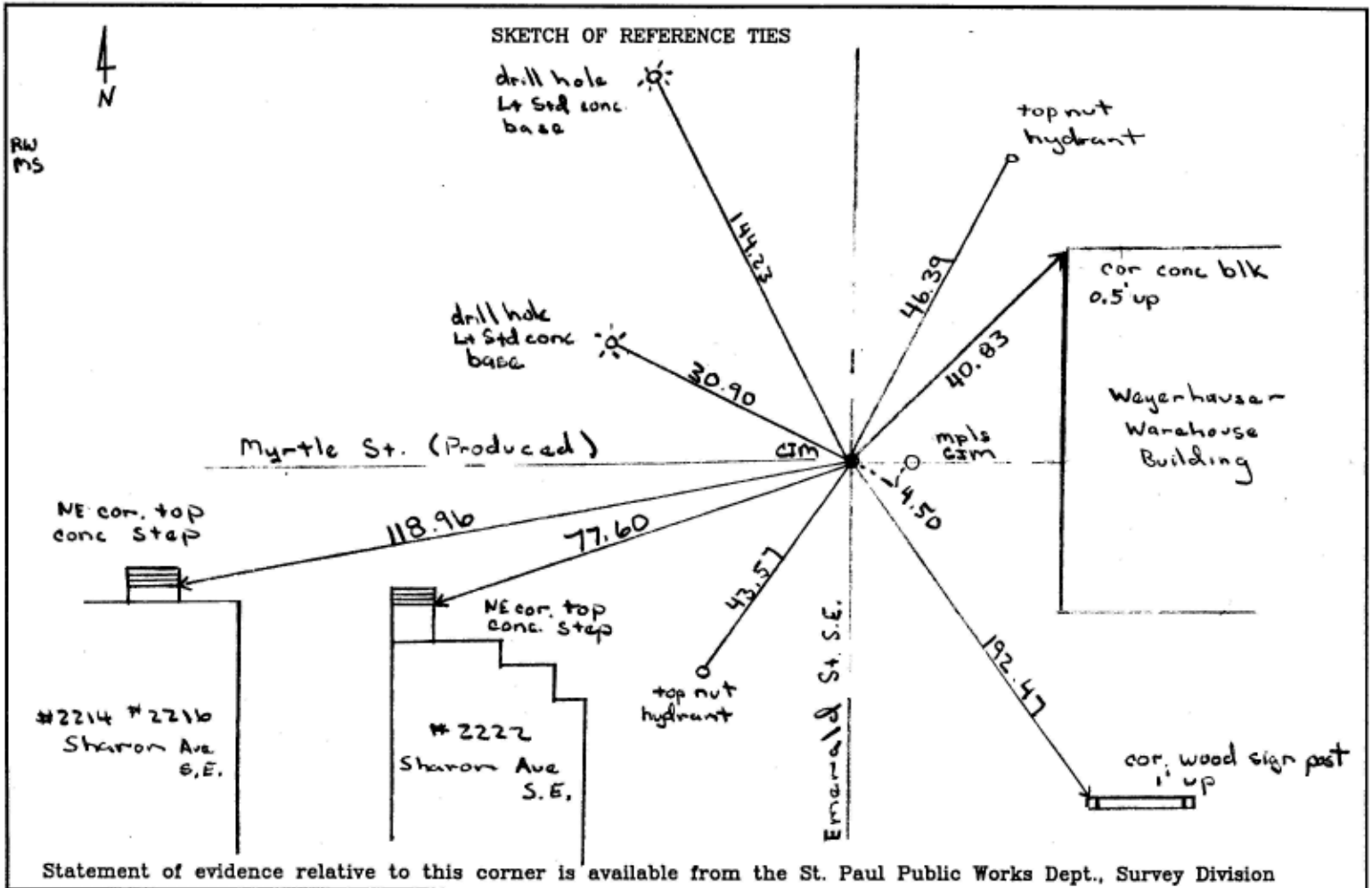
North West Corner of Section 32 Township 29 Range 23, 4<sup>th</sup> P.M.

STATE OF MINNESOTA, County of Ramsey  
At the corner location shown on the sketch:

On March 27, 2002 found a 1.0' offset nails - west & north  
date

- left monument as found
- lowered monument
- removed monument (explain)

On March 27, 2002 placed a CIM 0.03 below asphalt surface  
date



I hereby certify that this document and the data contained herein was prepared by me or under my direct supervision.

[Signature] 4/05/02  
SIGNATURE DATE

Registration No. 13144  
 Land Surveyor  County Surveyor  
 Professional Engineer  
 Chief Surveyor, City of St. Paul

Office of The County Recorder, County of Ramsey

I hereby certify that this document was filed in the count Recorders office at \_\_\_\_\_ M. on the \_\_\_\_\_ day of \_\_\_\_\_

County Recorder \_\_\_\_\_

By \_\_\_\_\_, Deputy

DOCUMENT NUMBER \_\_\_\_\_