

CERTIFICATE OF LOCATION OF GOVERNMENT CORNER

MON. NO. 79
OLD INDEX No 49

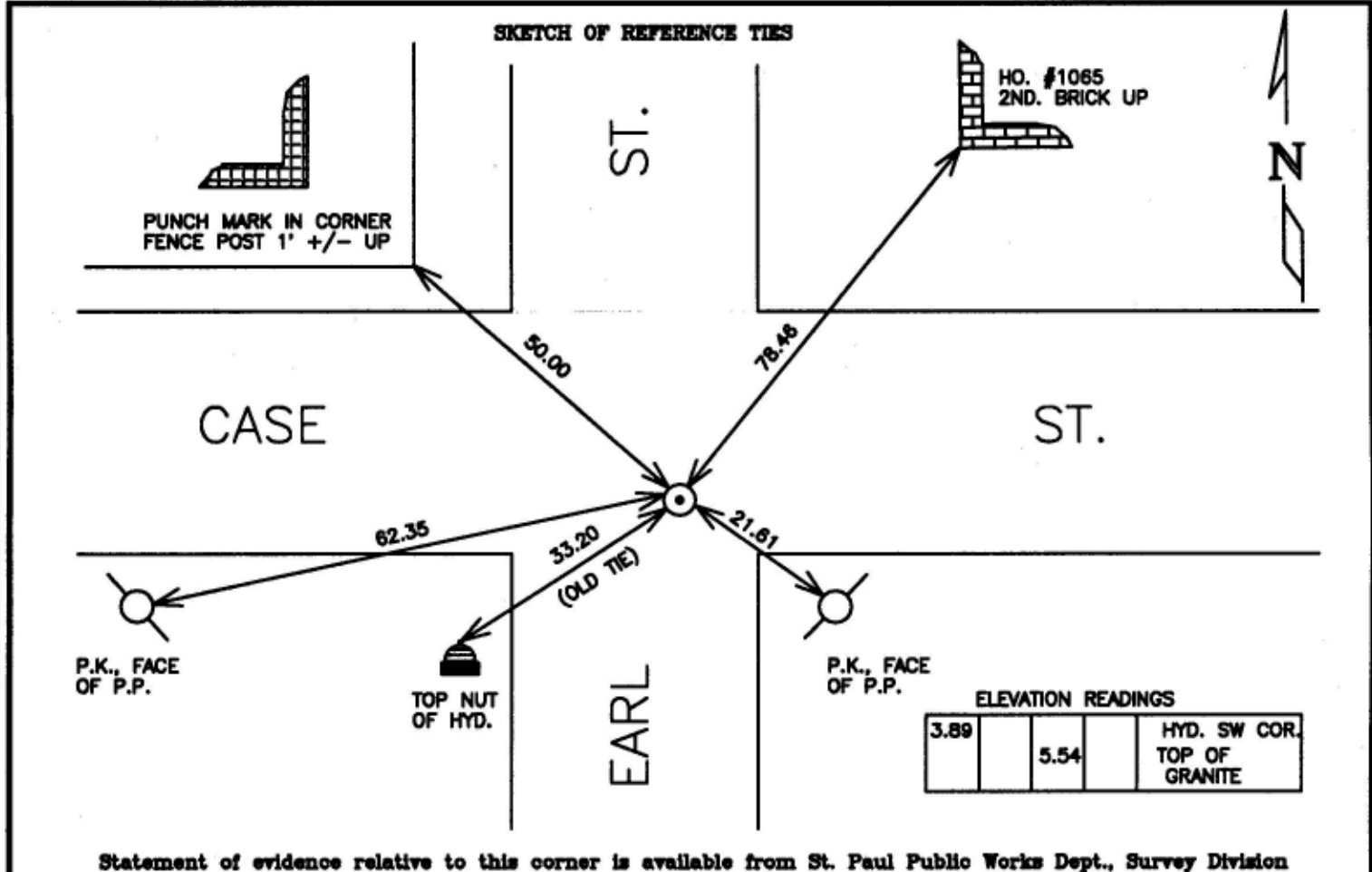
CENTER Corner of Section 28 Township 29 Range 22, 4TH.P.M.

STATE OF MINNESOTA, County of Ramsey
At the corner location shown on the sketch:

On DEC. 12, 1995 found a IRON PIN .15' +/- BELOW GRADE
IN THE CENTER OF A GRANITE: .3' +/- BELOW GRADE AND RE-TIED.

- left monument as found
- lowered monument
- removed monument (explain)

On _____ placed a _____



I hereby certify that this document and the data contained herein was prepared by me or under my direct supervision.

Richard C. Benson DEC. 28, 1995
SIGNATURE DATE

- Registration No. 23300
- Land Surveyor
 - County Surveyor
 - Professional Engineer
 - Chief Surveyor, City of St. Paul

Office of The County Recorder, County of Ramsey

I hereby certify that this document was filed in the county

Recorders office at _____ m. on the _____ day of _____

County Recorder _____

By _____, Deputy

DOCUMENT NUMBER _____