

# CERTIFICATE OF LOCATION OF GOVERNMENT CORNER

CITY MON. NO. 69

OLD INDEX NO. 666

CENTER Corner of Section 27 Township 29 Range 23, 4<sup>th</sup> P.M.

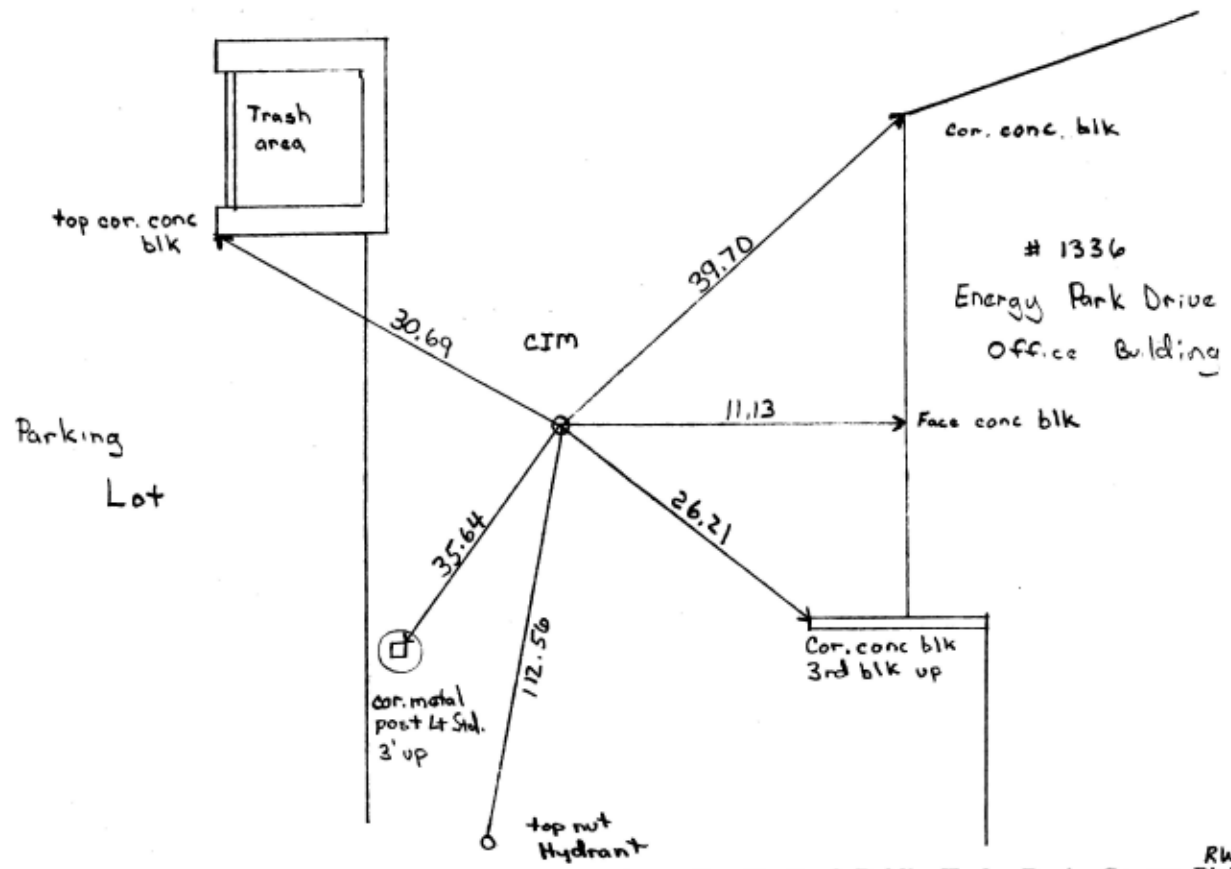
STATE OF MINNESOTA, County of Ramsey  
At the corner location shown on the sketch:

On \_\_\_\_\_ found a \_\_\_\_\_  
date

- left monument as found
- lowered monument
- removed monument (explain)

On Oct. 6, 2000 placed a CIM 0.1' below grass grade  
date

SKETCH OF REFERENCE TIES



Statement of evidence relative to this corner is available from the St. Paul Public Works Dept., Survey Division RW, MS, LL.

I hereby certify that this document and the data contained herein was prepared by me or under my direct supervision.

Jeffrey P. Pano Oct. 9, 2000  
 SIGNATURE DATE  
 Registration No. 13144  
 Land Surveyor  County Surveyor  
 Professional Engineer  
 Chief Surveyor, City of St. Paul

Office of The County Recorder, County of Ramsey  
 I hereby certify that this document was filed in the county  
 Records office at \_\_\_\_\_ M. on the \_\_\_\_\_ day of \_\_\_\_\_  
 \_\_\_\_\_  
 County Recorder \_\_\_\_\_  
 By \_\_\_\_\_, Deputy  
 DOCUMENT NUMBER \_\_\_\_\_